

GDNF, human recombinant

Catalogue #	P-103-100
Synonyms:	Glial cell line-derived neurotrophic factor, Astrocyte-derived trophic factor (ATF)
Uniprot ID:	P39905
Source:	Human
MW:	Mature GDNF, Approximately 15 kDa, a single non-glycosylated polypeptide chain containing 134 amino acids
Host:	CHO-based cell line (expressed by QMCF Technology)
Purification:	Purified by ion-exchange chromatography and gel-filtration from serum-free CHO growth media. Protein is sterile-filtrated through 0.22 µm filter
Concentration:	0.9 mg/ml
Buffer:	PBS pH 7.4
Endotoxine:	Less than 1EU/mg of protein as determined by LAL method
QC:	Coomassie-stained SDS-PAGE analysis), cell based assay (cRET-MAPK-nluc pathway) showing functionality
Related Products:	Monoclonal antibodies against human GDNF.
Shipping:	Shipped on dry ice
Storage:	Store at -70°C upon receipt. Recommended to aliquot into smaller quantities. Avoid repeated freeze-thaw cycles
Background:	GDNF is an important member of the GDNF family of ligands. Four members of neurotrophic factors belonging to the GDNF family of ligands : glial cell line-derived neurotrophic factor (GDNF), neurturin (NRTN), artemin (ARTN), and persephin (PSPN). GDNF is important in the promotion of the survival of dopaminergic

neurons. The recombinant form of this protein promotes the survival and differentiation of dopaminergic neurons in culture, and is able to prevent apoptosis of motor neurons induced by axotomy.

Custom price Custom quantity - ask quotation

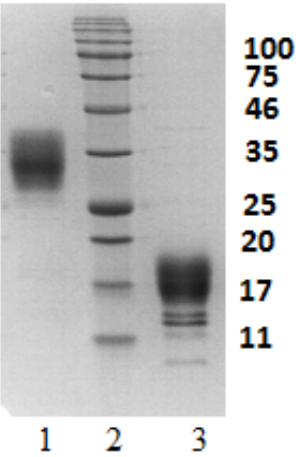


Figure 1. Coomassie-stained SDS-PAGE analysis of human GDNF. Lane 1. 2 µg of GDNF (non-reduced); Lane 2. Protein size marker (Blue Protein Ladder Prestained, Naxo 8003). Lane 3. 2 µg of GDNF (reduced).

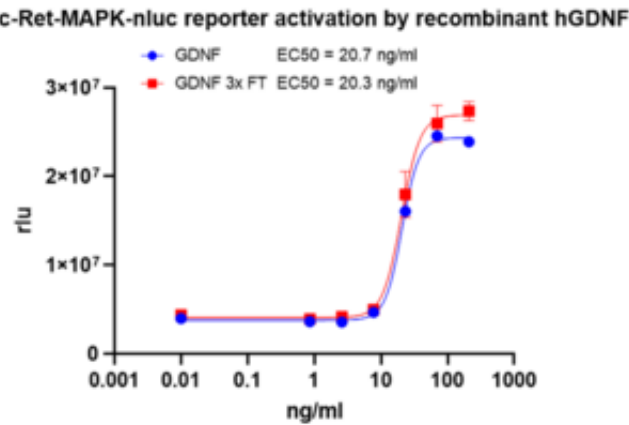


Figure 2. EC₅₀ concentration for final product and after 3 freeze-thaw cycles, determined by cRET-MAPK-nluc pathway in cell based assay.