



SARS-Cov-2 S1 RBD2

Catalogue #	P-307-100
Description:	Protein contains amino acids 319-541, plus two extra amino acids (AS) in N-terminus and His-6 tag at C-terminus.
MW:	26.3 kDa
Host:	CHO-based cell line (expressed by QMCF Technology)
Purification:	Metal-affinity chromatography following gel filtration. Protein is sterile-filtrated through 0.22 µm filter.
Purity:	>95%
Concentration:	1 mg/ml
Buffer:	PBS pH 7.4
Endotoxine:	NA
Bioproperties:	Measured by its binding ability to ACE2 protein by OCTET RED96 system.
QC:	SDS-PAGE NanoDrop A280, analytical SEC, Octet binding to ACE2 receptor
Shipping:	Shipped on dry ice
Storage:	Store at -70°C upon receipt. Recommended to aliquot into smaller quantities. Avoid repeated freeze-thaw cycles
Custom price	Custom quantity - ask quotation

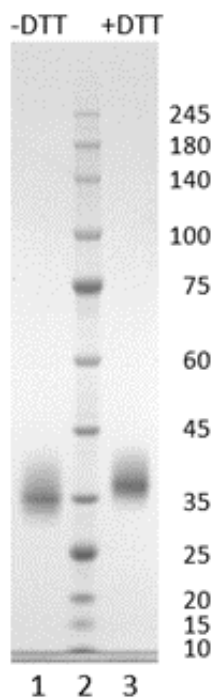


Figure 1. SDSPAGE analysis in reduced and non-reduced conditions. 1.3 μ g of S1 RBD2 protein were loaded per lane. Lane 1. RBD2 (-DTT); Lane 2. Protein size marker (Smobio); Lane 3. RBD2 (+DTT).

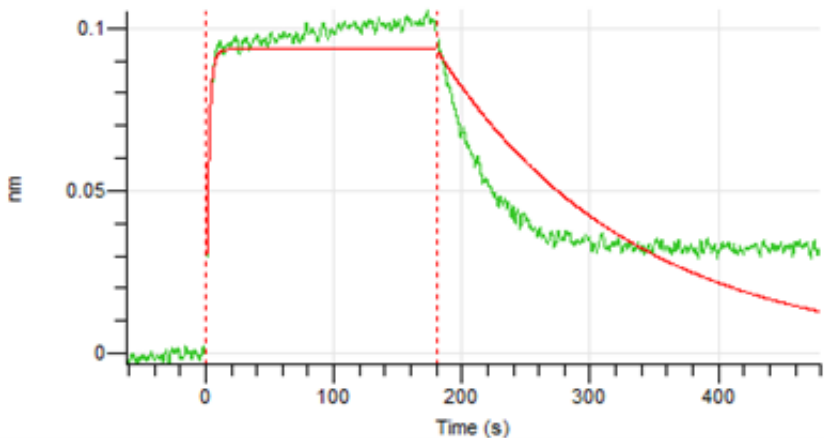


Figure 2. Octet Red96e analysis of SARS-CoV-2 S1 RBD2 binding to human ACE2 receptor.

Peak Table

Peak #	RT (min)	Area	Area %
1	9.649	4393.35	100.00

Chromatogram

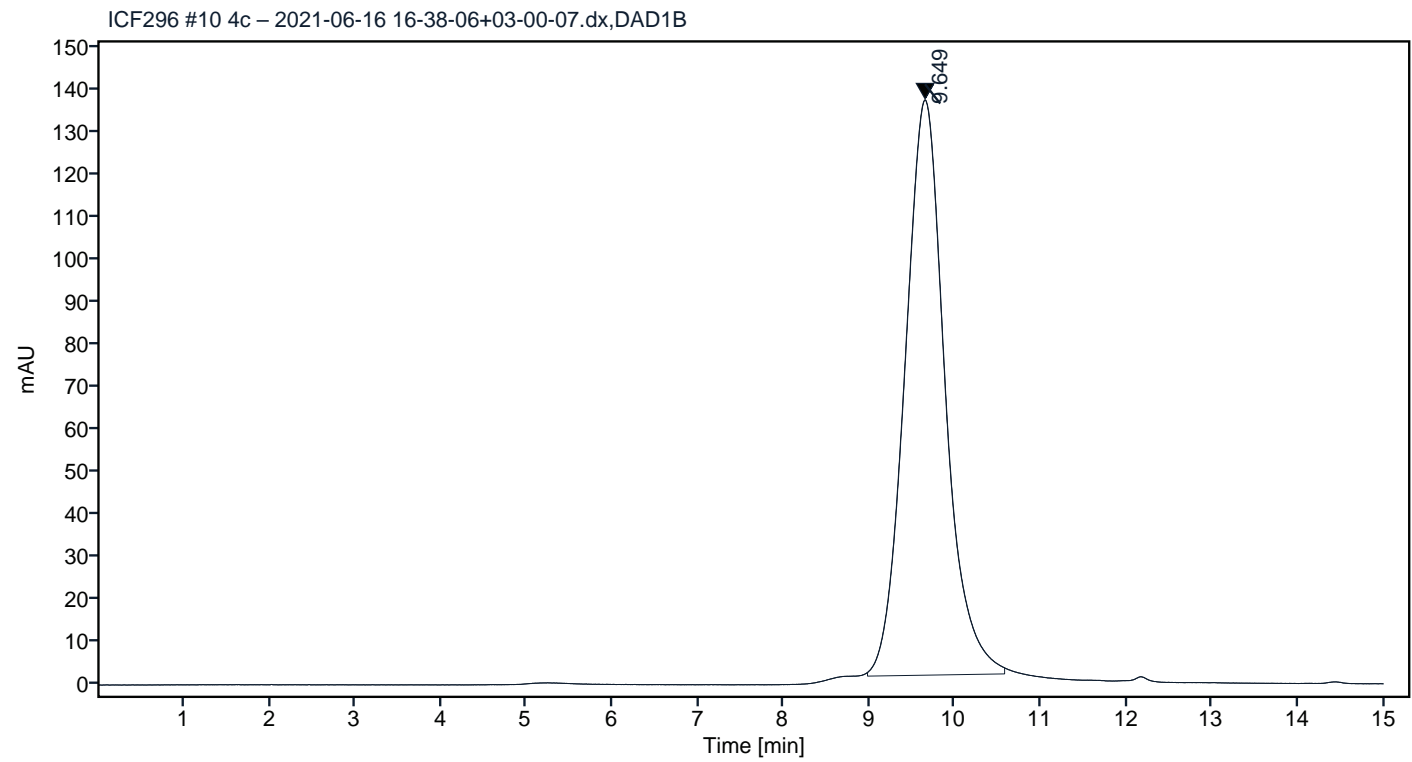


Figure 3. HPLC analytical SEC for final product.

Peak Table

Peak #	RT (min)	Area	Area %
1	9.650	4472.23	100.00

Chromatogram

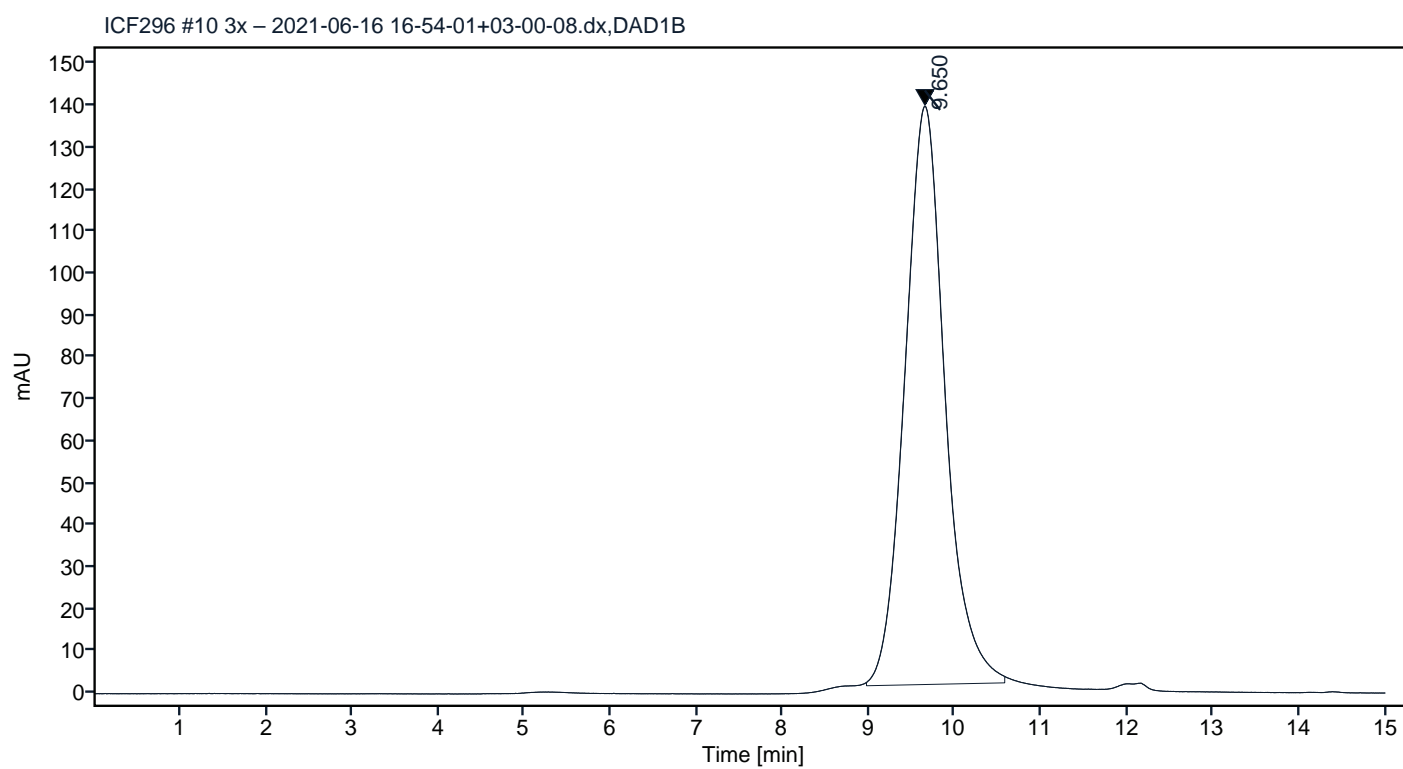


Figure 4. HPLC analytical SEC after 3 freeze-thaw cycles.