



Recombinant anti-human interleukin-6 antibody (clone 14E2)

Catalogue #	R1-648-100
Immunogen:	Recombinant hIL-6 protein
Immunogen Description:	Recombinant hIL-6 protein produced by CHO-based cell line (expressed by QMCF Technology).
Uniprot ID:	P05231
Clonality:	Human monoclonal
Clone:	14E2
Class:	hIgG1
Reactivity:	Reacts with human IL-6. No cross-reactivity with IL-1?, IL-1?, IL-2, IL-3, IL-4, IL-8, IFN? and TNF? proteins.
Dissociation constant (K _D):	1.13 x 10 ⁻⁹ M
Application:	ELISA
Kd:	1.13 x 10 ⁻⁰⁹ M
Purification:	Protein A affinity chromatography following desalting
Buffer:	PBS pH 7.4
QC:	Antigen recognition in ELISA, Simply Blue Safe stained SDS-PAGE, analytical SEC, Octet BLI analysis
Shipping:	Shipped with blue ice.
Storage:	Store at +4 °C.

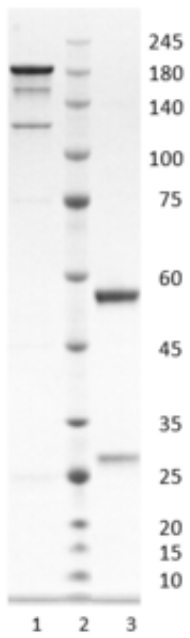


Figure 1. Simply Blue Safe stain analysis of recombinant anti-human interleukin-6 antibody, clone 14E2. 4-12% Nupage gel is used for analysis. Lane 1. Recombinant anti-human interleukin-6 antibody, clone 14E2 (-DTT). Lane 2. Size marker. Lane 3. Recombinant anti-human interleukin-6 antibody, clone 14E2 (+DTT).

Peak Table

Peak #	RT (min)	Area	Area %
1	7.200	5113.38	100.00

Chromatogram

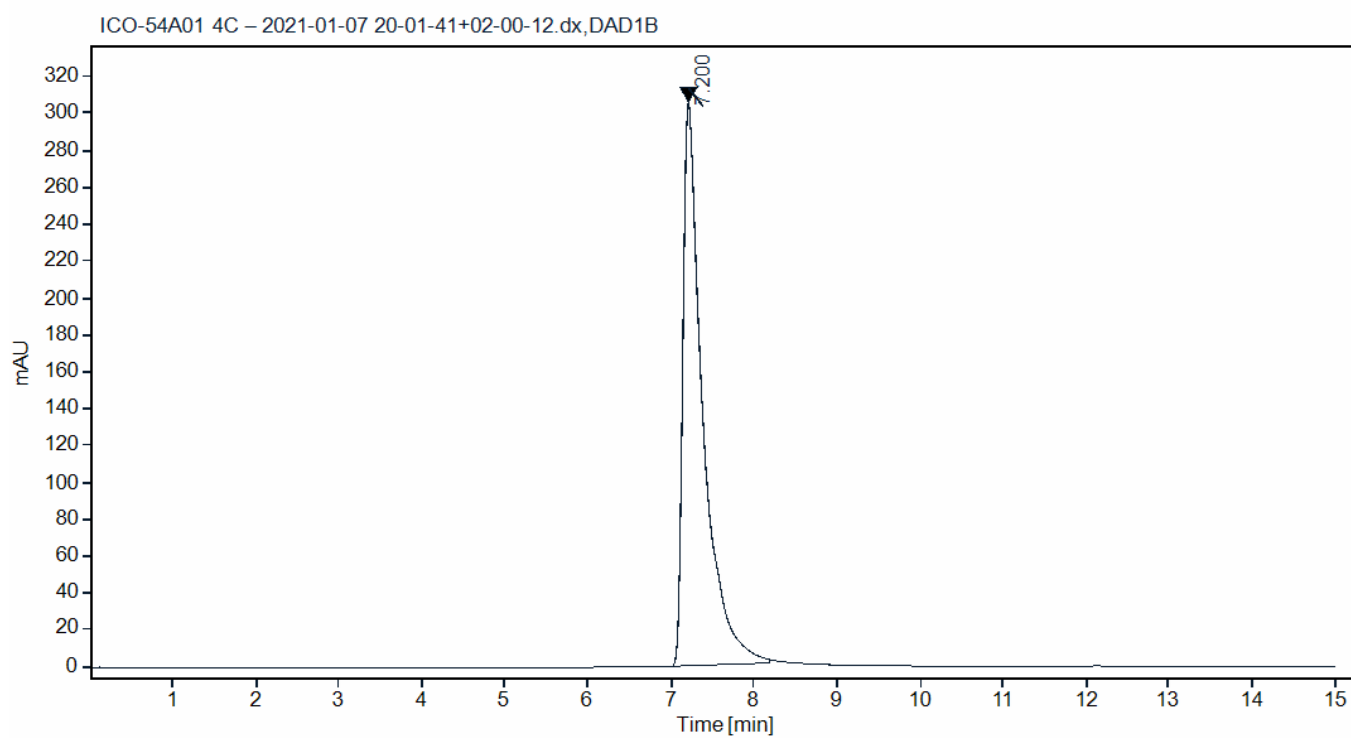


Figure 2. HPLC analytical SEC for final product.

Peak Table

Peak #	RT (min)	Area	Area %
1	7.202	4481.58	100.00

Chromatogram

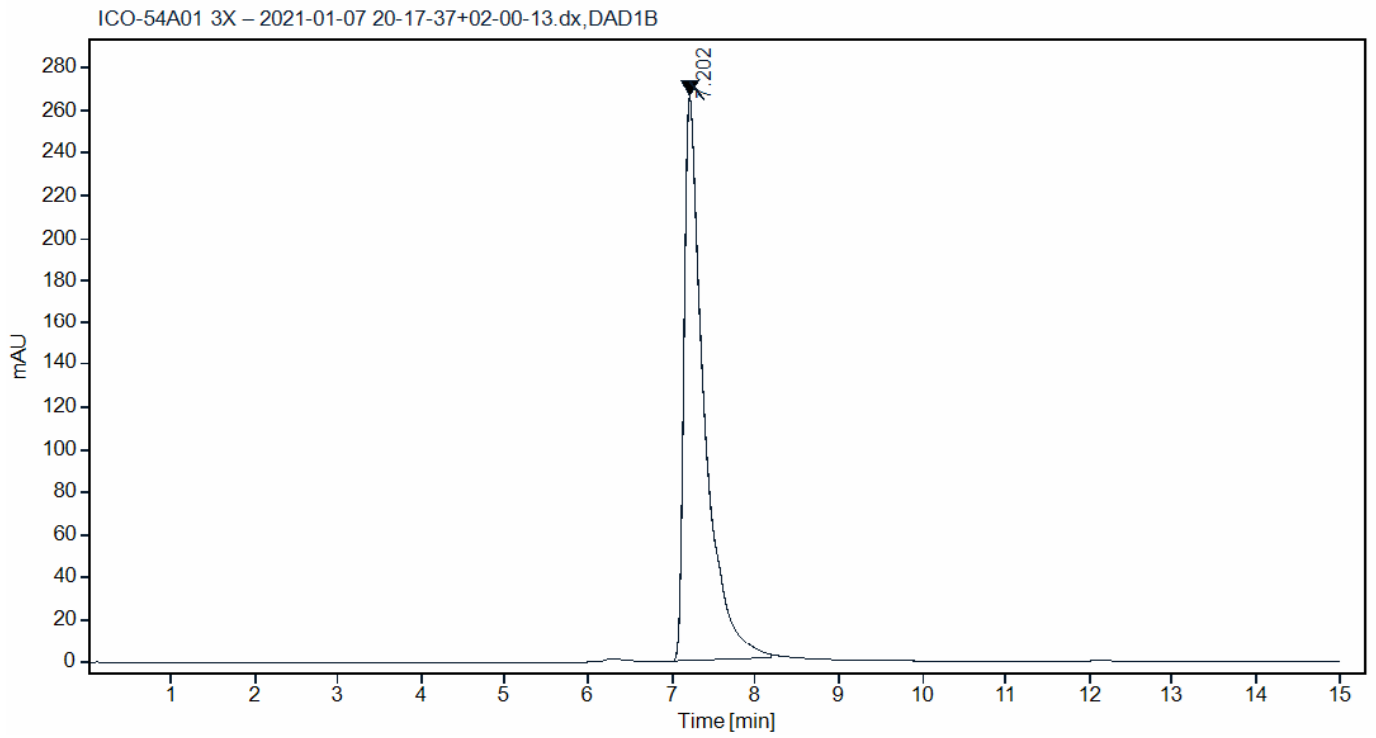


Figure 3. HPLC analytical SEC after 3 freeze-thaw cycles.

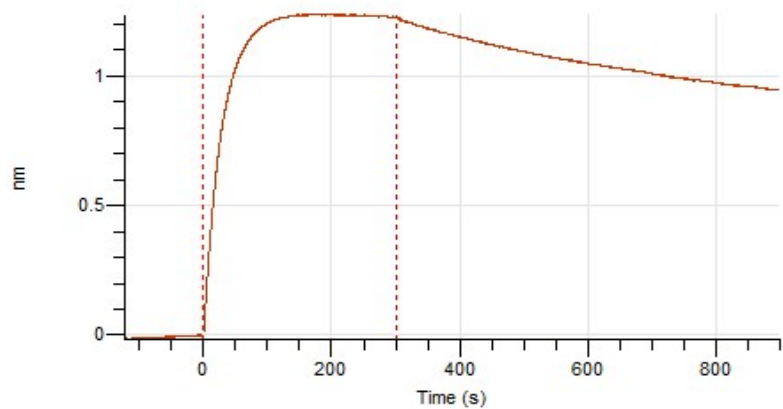


Figure 4. Octet BLI analysis.