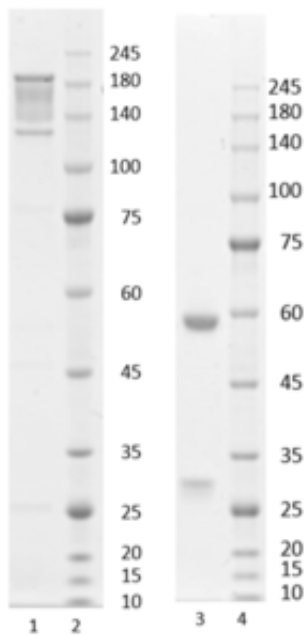




## Recombinant anti-human interleukin-6 antibody (clone 11D8)

Catalogue #	R1-645-100
Immunogen:	Recombinant hIL-6 protein
Immunogen Description:	Recombinant hIL-6 protein produced by CHO-based cell line (expressed by QMCF Technology).
Uniprot ID:	P05231
Clonality:	Human monoclonal
Clone:	11D8
Class:	hIgG1
Reactivity:	Reacts with human IL-6. No cross-reactivity with IL-1?, IL-1?, IL-2, IL-3, IL-4, IL-8, IFN? and TNF? proteins.
Application:	ELISA, CLIA
Kd:	1.82 x 10 <sup>-9</sup> M
Purification:	Protein A affinity chromatography following desalting
Buffer:	PBS pH 7.4
QC:	Simply Blue Safe stained SDS-PAGE, analytical SEC, Octet binding
Shipping:	Shipped with blue ice.
Storage:	Store at +4 °C. Avoid multiple freeze-thaw cycles.



**Figure 1.** Simply Blue Safe stained SDS-PAGE analysis of recombinant anti-human interleukin-6 antibody, clone 11D8. 4-12% gel is used for analysis. Lane 1. Recombinant anti-human interleukin-6 antibody, clone 11D8 (-DTT) Lane 2. Size marker Lane 3. Recombinant anti-human interleukin-6 antibody, clone 11D8 (+DTT) Lane 4. Size marker

Peak Table

Peak #	RT (min)	Area	Area %
1	8.800	5372.53	100.00

Chromatogram

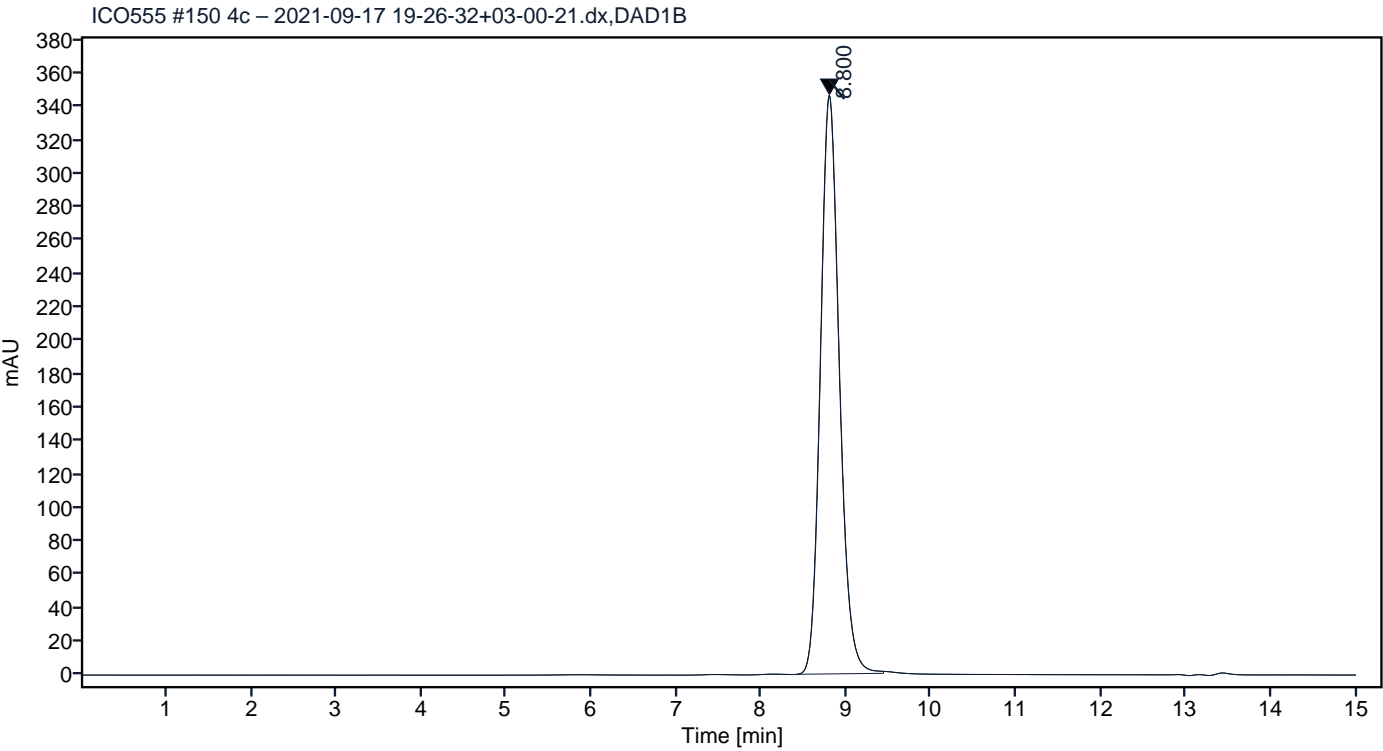


Figure 2. HPLC analytical SEC for final product.

Peak Table

Peak #	RT (min)	Area	Area %
1	8.811	5123.78	100.00

Chromatogram

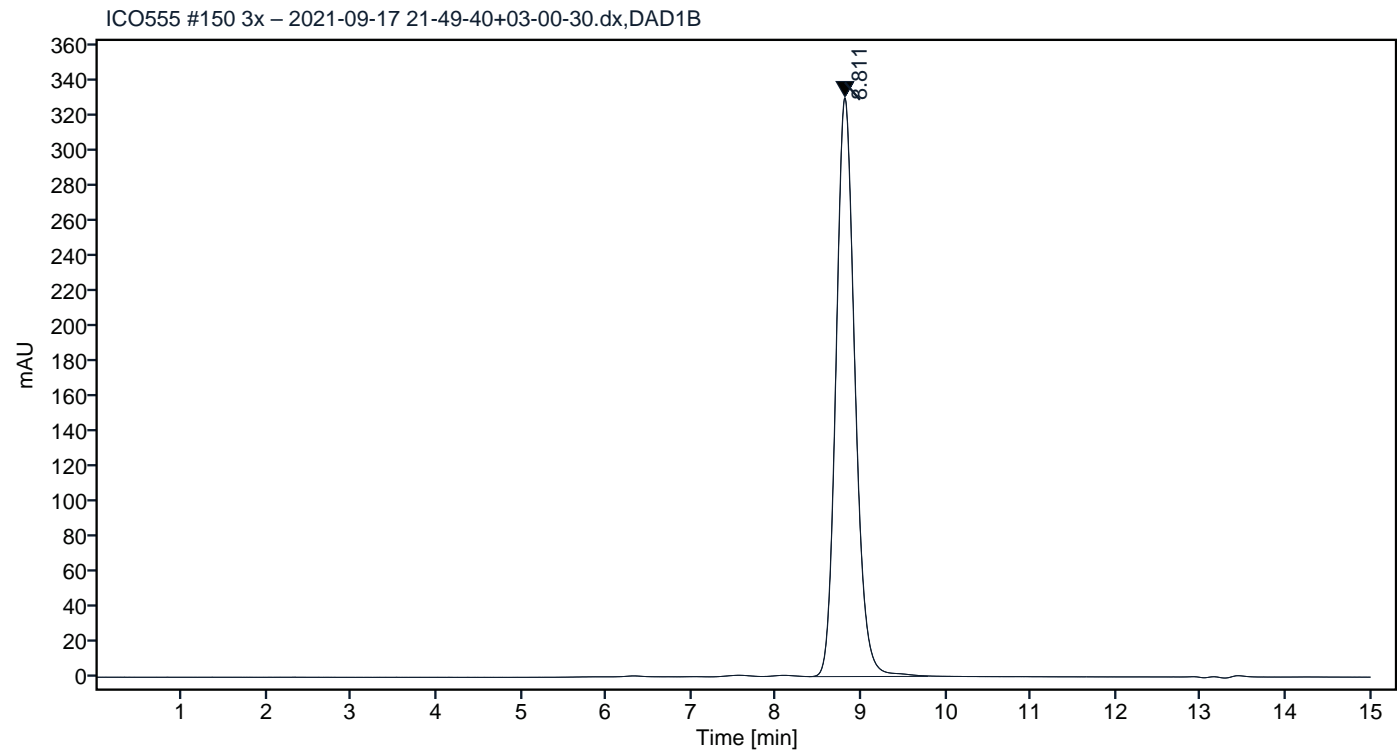
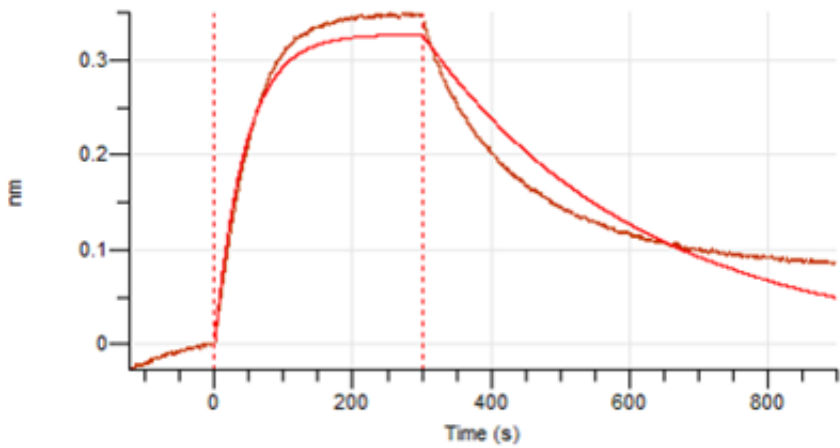


Figure 3. HPLC analytical SEC after 3 freeze-thaw cycles.



**Figure 4.** Octet RED96e analysis, antibody was loaded on sensor for capture of IL-6 protein