

Recombinant anti-human interleukin-6 antibody (clone 11C5)

Catalogue #	R1-644-100
Immunogen:	Recombinant hIL-6 protein
Immunogen Description:	Recombinant hIL-6 protein produced by CHO-based cell line (expressed by QMCF Technology).
Uniprot ID:	P05231
Clonality:	Human monoclonal
Clone:	11C5
Class:	hIgG1
Reactivity:	Reacts with human IL-6. No cross-reactivity with IL-1?, IL-1?, IL-2, IL-3, IL-4, IL-8, IFN? and TNF? proteins.
Application:	ELISA
Kd:	1.51 x 10 ⁻⁹ M
Purification:	Protein A affinity chromatography following desalting
Buffer:	PBS pH 7.4
QC:	Simply Blue Safe stained SDS-PAGE, analytical SEC, Octet binding
Shipping:	Shipped with blue ice.
Storage:	Store at +4 °C. Avoid multiple freeze-thaw cycles.

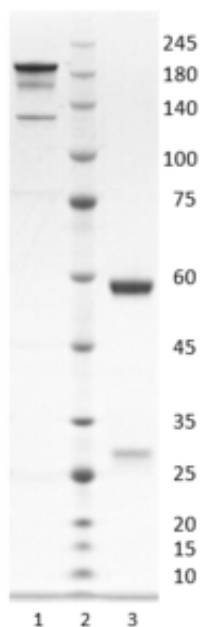


Figure 1. Simply Blue Safe stain analysis of recombinant anti-human interleukin-6 antibody, clone 11C5. 4-12% Nupage gel is used for analysis. Lane 1. Recombinant anti-human interleukin-6 antibody, clone 11C5 (-DTT) Lane 2. Size marker Lane 3. Recombinant anti-human interleukin-6 antibody, clone 11C5 (+DTT)

Peak Table

Peak #	RT (min)	Area	Area %
1	7.111	5078.28	100.00

Chromatogram

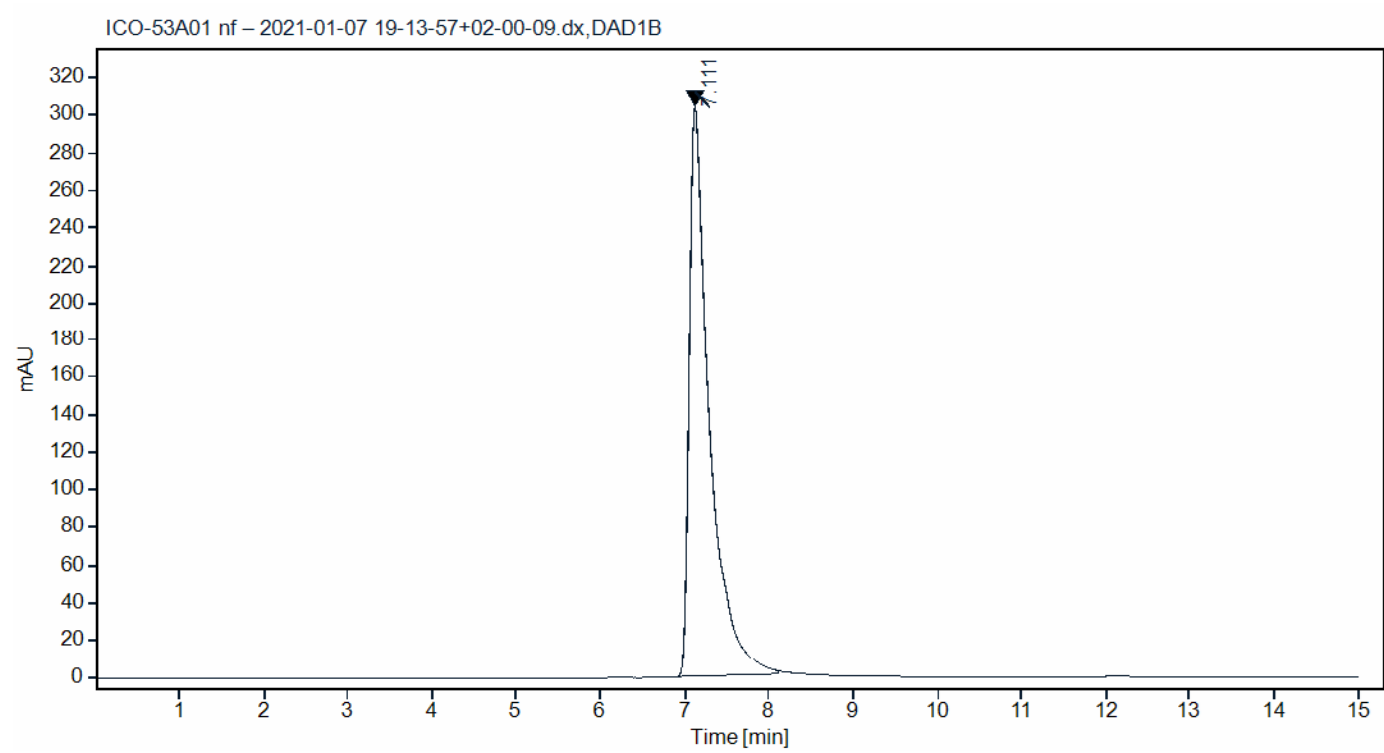


Figure 2. HPLC analytical SEC for final product.

Peak Table

Peak #	RT (min)	Area	Area %
1	7.110	4862.60	100.00

Chromatogram

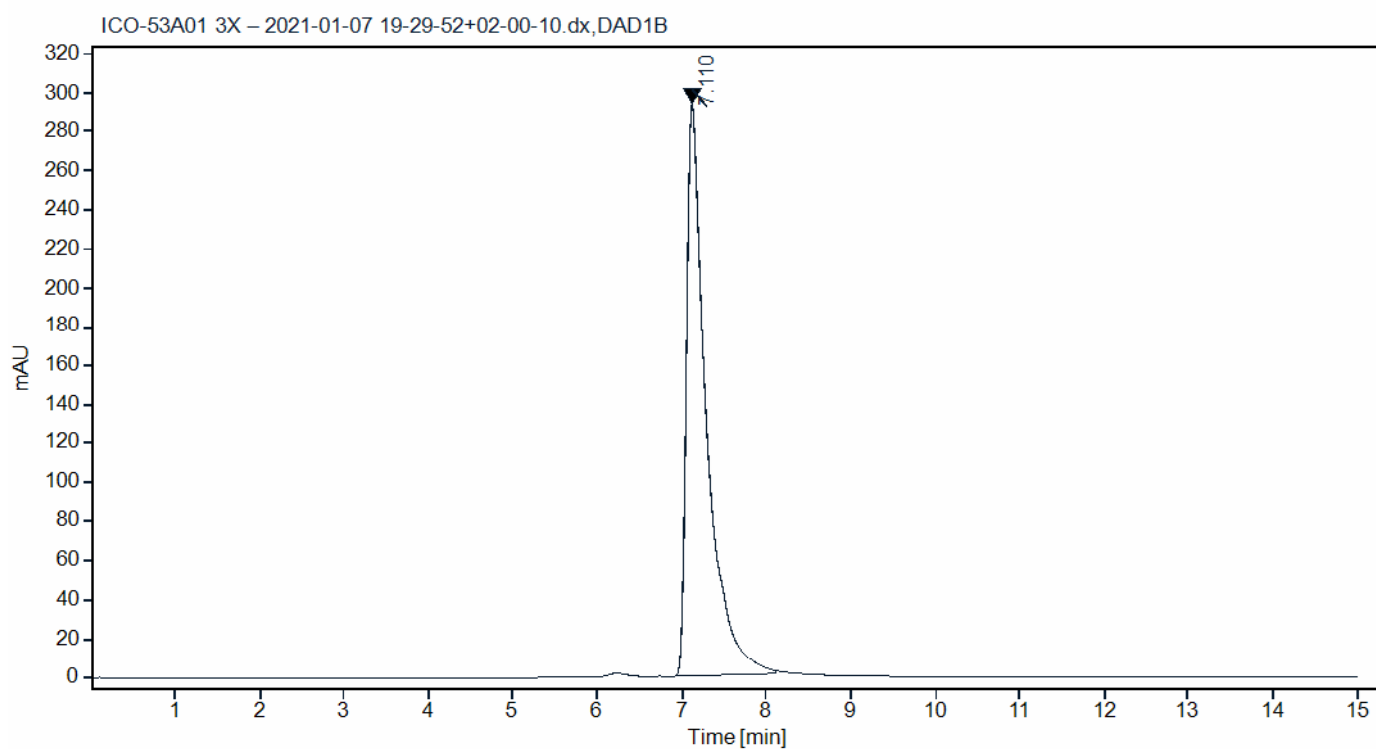


Figure 3. HPLC analytical SEC after 3 freeze-thaw cycles.

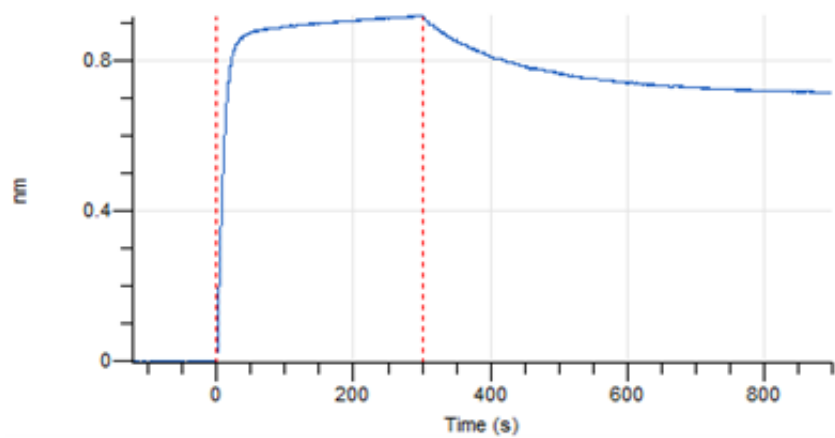


Figure 4. Octet RED96e analysis.