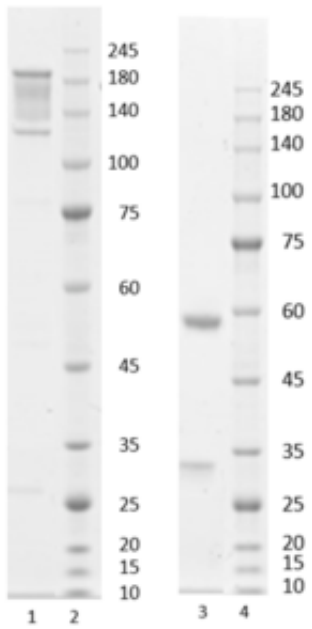




## Recombinant anti-human interleukin-6 antibody (clone 2G12)

Catalogue #	R1-641-100
Immunogen:	Recombinant hIL-6 protein
Immunogen Description:	Recombinant hIL-6 protein produced by CHO-based cell line (expressed by QMCF Technology).
Uniprot ID:	P05231
Clonality:	Human monoclonal
Clone:	2G12
Class:	hIgG1
Reactivity:	Reacts with human IL-6. No cross-reactivity with IL-1?, IL-1?, IL-2, IL-3, IL-4, IL-8, IFN? and TNF? proteins.
Application:	ELISA, CLIA
Kd:	4.83 x 10 <sup>-9</sup> M
Purification:	Protein A affinity chromatography following desalting
Buffer:	PBS pH 7.4
QC:	Simply Blue Safe stained SDS-PAGE, analytical SEC, Octet BLI analysis
Shipping:	Shipped with blue ice.
Storage:	Store at +4 °C.

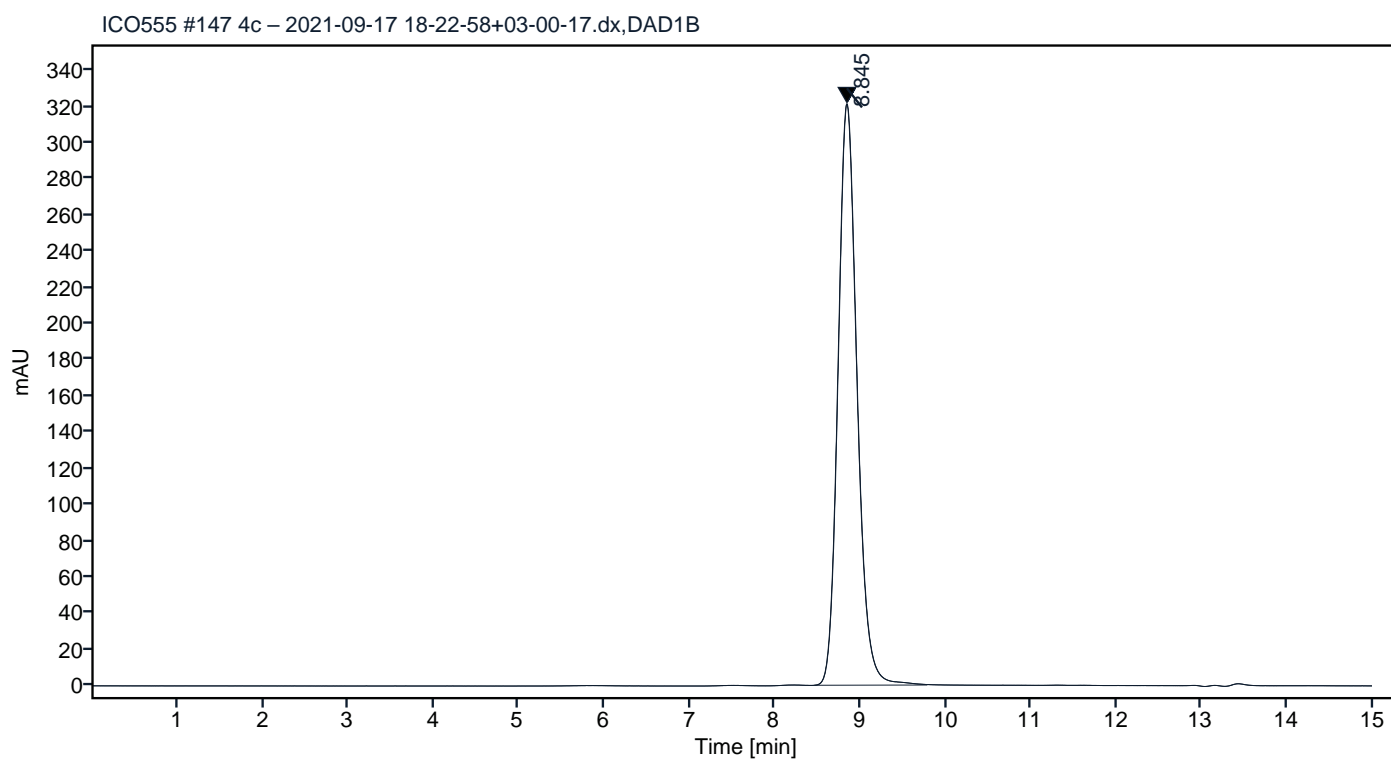


**Figure 1.** Simply Blue Safe stained SDS-PAGE analysis of recombinant anti-human interleukin-6 antibody, clone 2G12. 4-12% gel is used for analysis. Lane 1. Recombinant anti-human interleukin-6 antibody, clone 2G12 (-DTT) Lane 2. Size marker Lane 3. Recombinant anti-human interleukin-6 antibody, clone 2G12 (+DTT) Lane 4. Size marker

## Peak Table

Peak #	RT (min)	Area	Area %
1	8.845	4982.97	100.00

## Chromatogram



**Figure 2.** HPLC analytical SEC for final product.

## Peak Table

Peak #	RT (min)	Area	Area %
1	8.844	4856.33	100.00

## Chromatogram

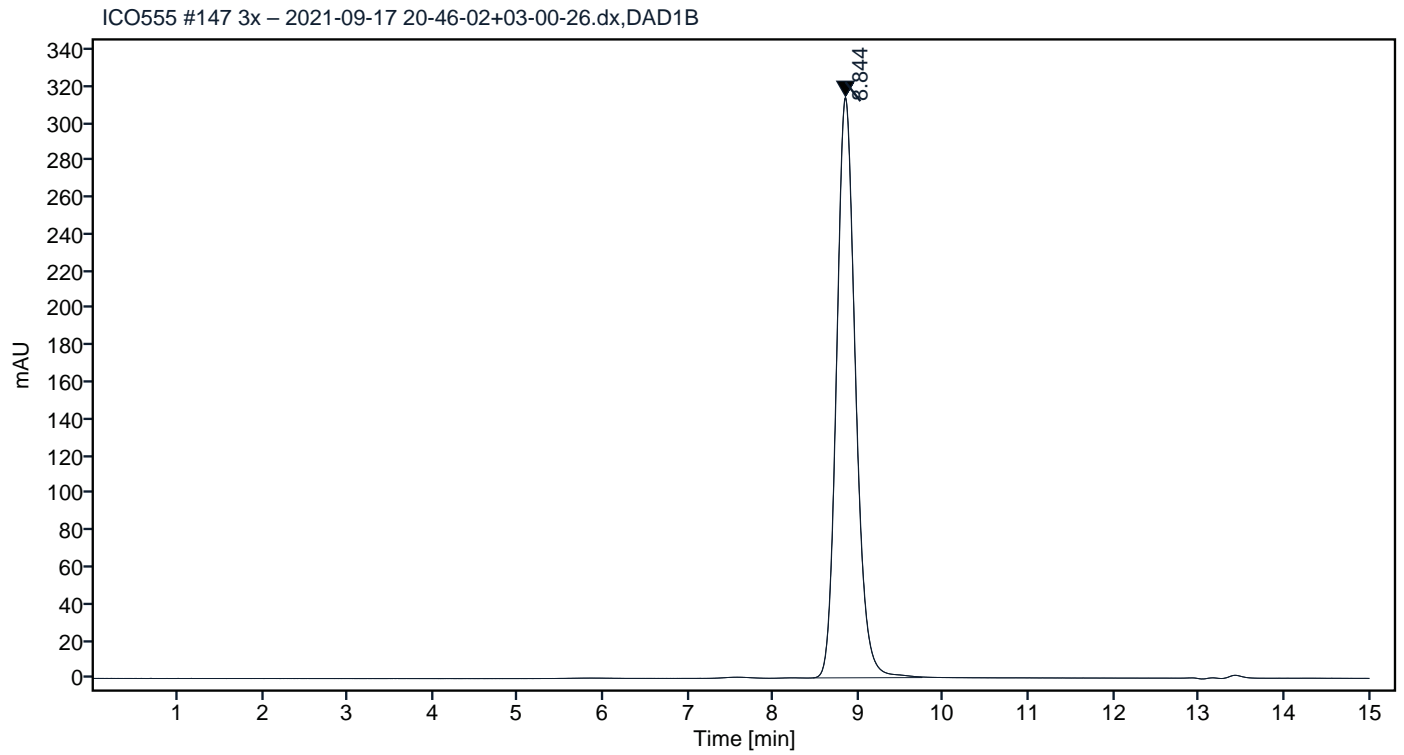
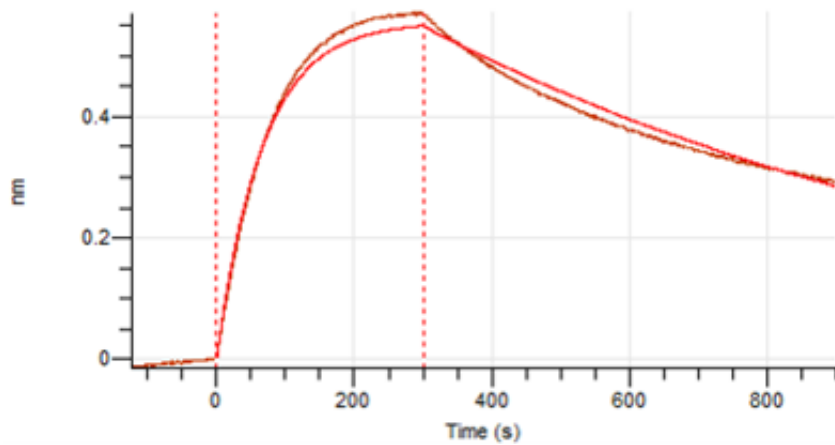


Figure 3. HPLC analytical SEC after 3 freeze-thaw cycles.



**Figure 4.** Octet BLI analysis, antibody was loaded on sensor for capture of IL-6 protein.