



Human IgG1-lambda antibody to SARS CoV-2 S1 RBD (clone 27C2)

Catalogue #	R1-158-100
Immunogen:	SARS-CoV-2 virus
Immunogen Description:	SARS-CoV-2 virus (PBMCs isolated from patients recovered from SARS-CoV-2 infection, antibodies discovered by using HybriFree Technology)
Clonality:	Human monoclonal
Clone:	27C2
Class:	hIgG1
Reactivity:	SARS-CoV-2 Spike RBD
Dissociation constant (K_D):	< 1.0×10^{-12} M (measured against SARS-CoV-2 Trimeric Spike protein) 6.58×10^{-9} M (measured against SARS-CoV-2 Spike S1 protein)
Application:	ELISA
ELISA:	0,02-0,04 ng/ml
Purification:	Protein A affinity chromatography following desalting
Buffer:	PBS pH 7.4
Shipping:	Shipped at ambient temperature.
Storage:	Store at +4 °C. Avoid multiple freeze-thaw cycles.

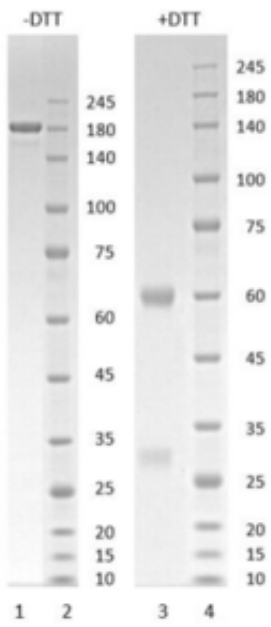


Figure 1. Coomassie-stained SDS-PAGE analysis of monoclonal antibody to SARS-CoV-2 Spike RBD, clone 27C2. 4-12% gradient gel is used for analysis. Lane 1. Monoclonal antibody to SARS-CoV-2 Spike RBD, clone 27C2 (-DTT). Lane 2. Size Marker. Lane 3. Monoclonal antibody to SARS-CoV-2 Spike RBD, clone 27C2 (+DTT). Lane 4. Size Marker.

Peak Table

Peak #	RT (min)	Area	Area %
1	7.203	5444.42	100.00

Chromatogram

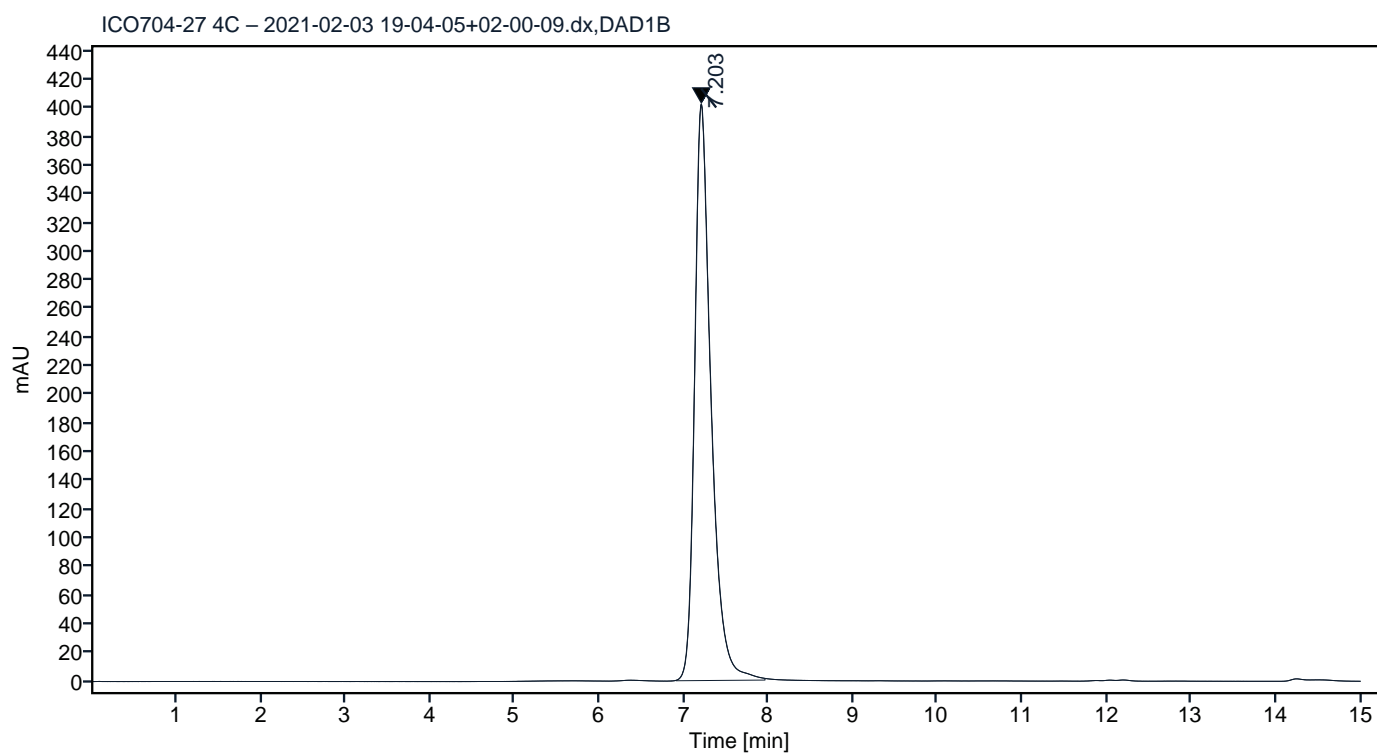


Figure 2. HPLC analytical SEC for final product.

Peak Table

Peak #	RT (min)	Area	Area %
1	7.203	5246.91	100.00

Chromatogram

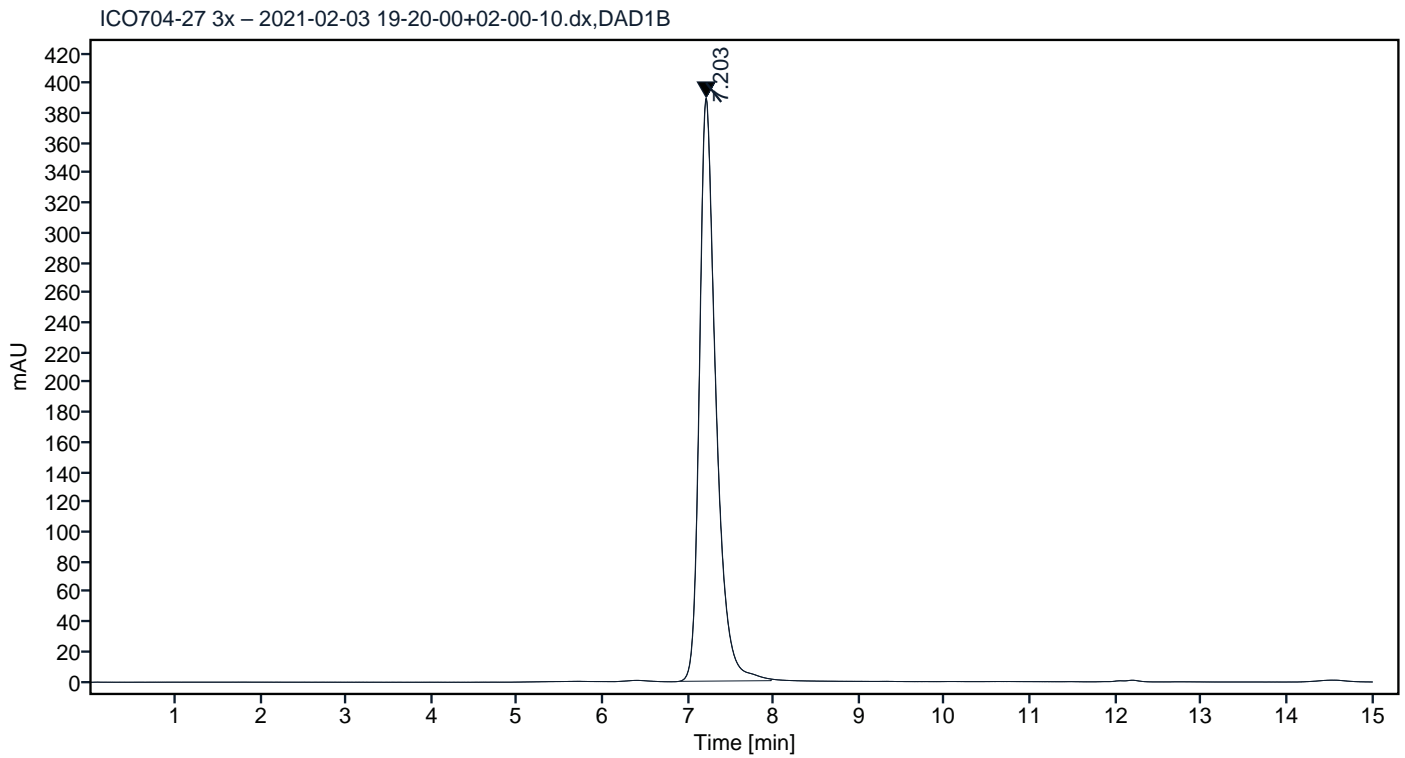


Figure 3. HPLC analytical SEC after 3 freeze-thaw cycles.

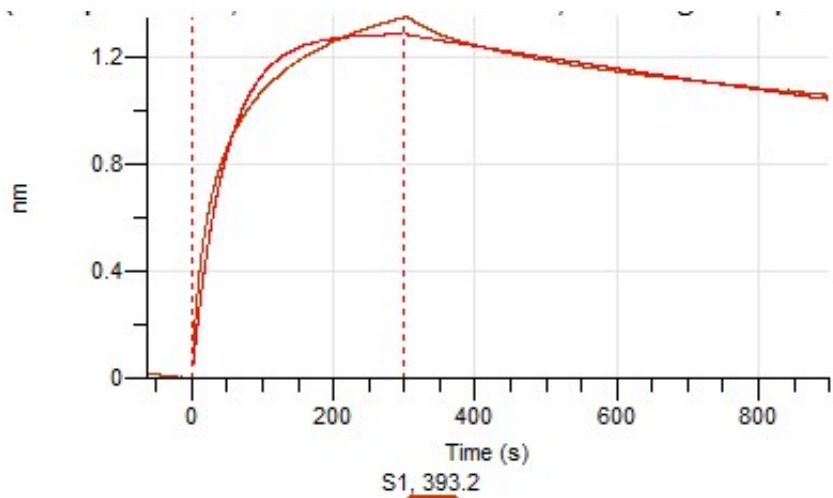


Figure 4. Octet RED96e analysis, antibody was loaded on sensor for capture of Spike S1 protein.