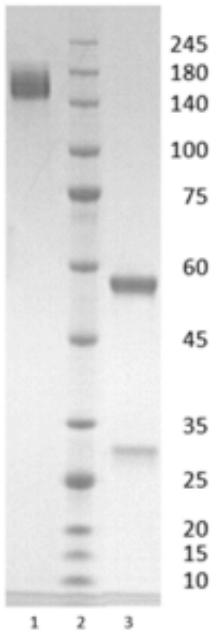




## Human IgG1-lambda antibody to SARS CoV-2 NP (clone 22F9)

Catalogue #	R1-149-100
Immunogen:	Nucleocapsid protein SARS-CoV-2
Immunogen Description:	Recombinant SARS-CoV-2 Nucleocapsid protein produced by CHO-based Icosagen Cell factory Ltd. proprietary suspension cell line
Clonality:	Human monoclonal
Clone:	22F9
Class:	hIgG1
Reactivity:	SARS-CoV-2 Nucleocapsid protein
Dissociation constant ( $K_D$ ):	$< 1.0 \times 10^{-12}$ M
Application:	ELISA, WB
Kd:	$< 1.0 \times 10^{-12}$ M
ELISA:	0,08-0,16 $\mu$ g/ml
Purification:	Protein A affinity chromatography
Buffer:	PBS pH 7.4
Shipping:	Shipped at ambient temperature.
Storage:	Store at +4 °C. Avoid multiple freeze-thaw cycles.

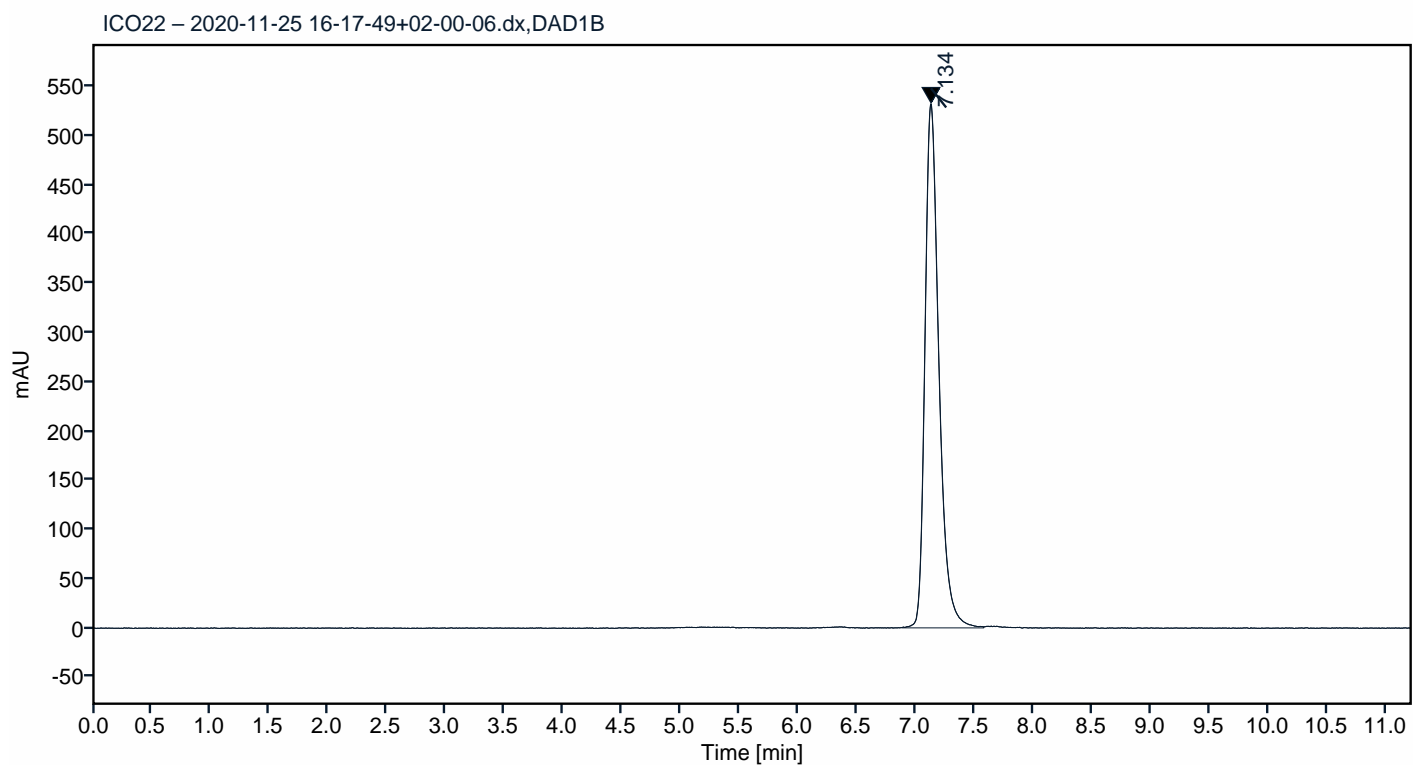


**Figure 1.** Coomassie-stained SDS-PAGE analysis of monoclonal antibody to SARS-CoV-2 Nucleocapsid protein, clone 22F9. 4-12% gradient gel is used for analysis. Lane 1. Monoclonal antibody to SARS-CoV-2 Nucleocapsid protein, clone 22F9 (-DTT). Lane 2. Size marker. Lane 3. Monoclonal antibody to SARS-CoV-2 Nucleocapsid protein, clone 22F9 (+DTT).

## Peak Table

Peak #	RT (min)	Area	Area %
1	7.134	4391.70	100.00

## Chromatogram

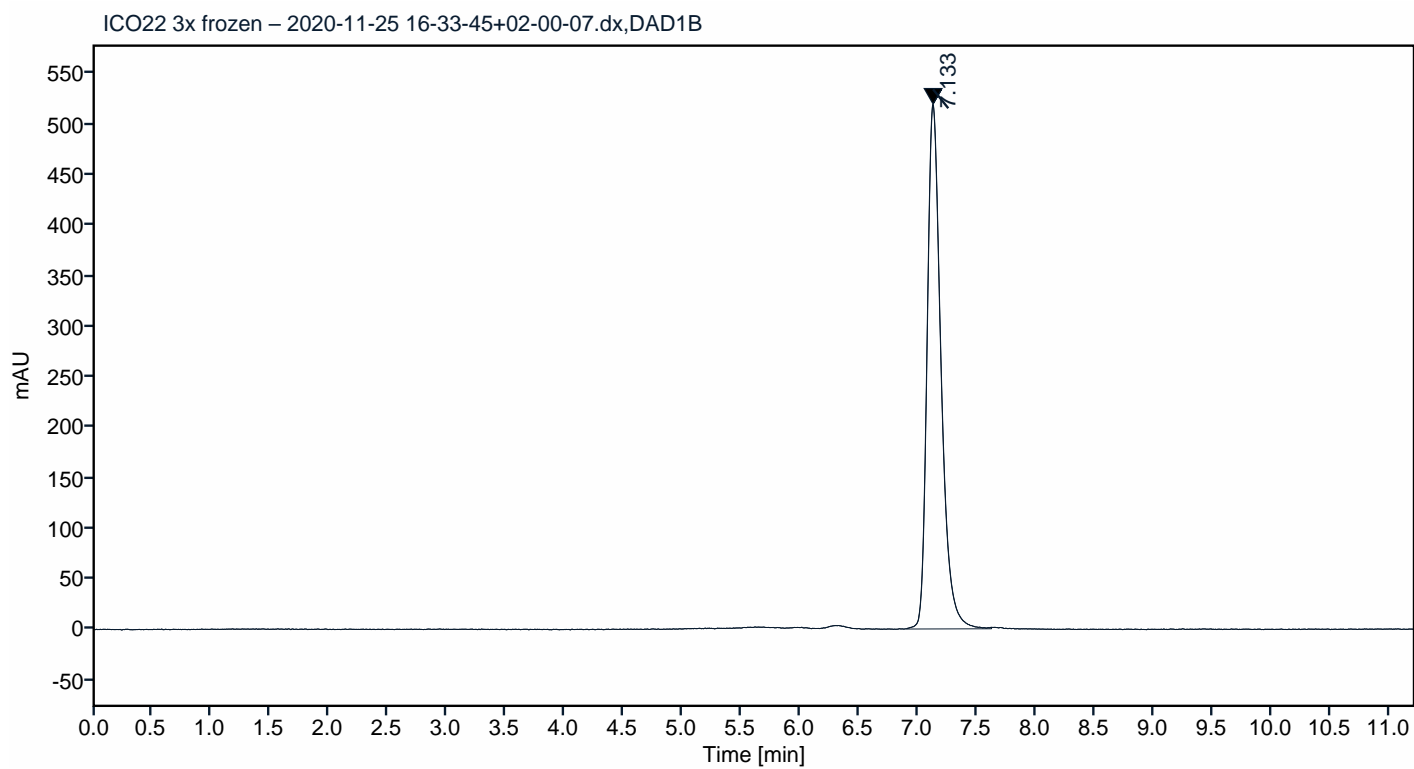


**Figure 2.** HPLC analytical SEC for final product.

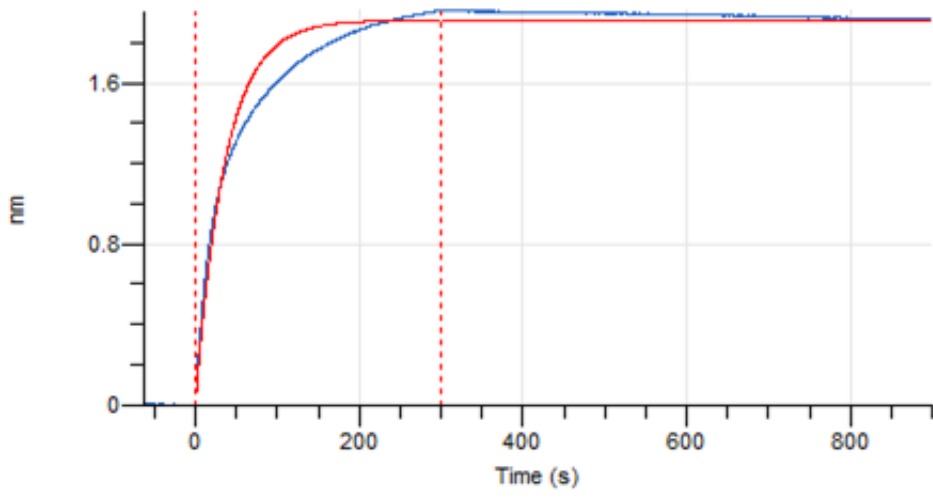
## Peak Table

Peak #	RT (min)	Area	Area %
1	7.133	4277.24	100.00

## Chromatogram



**Figure 3.** HPLC analytical SEC after 3 freeze-thaw cycles.



**Figure 4.** Octet RED96e analysis, antibody was loaded on sensor for capture of Nucleocapsid protein.