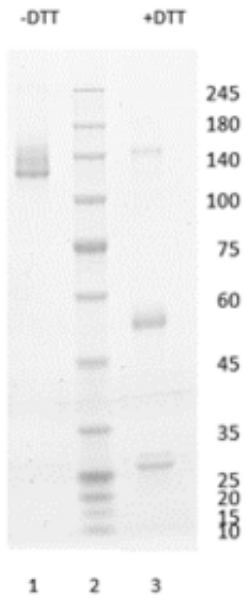


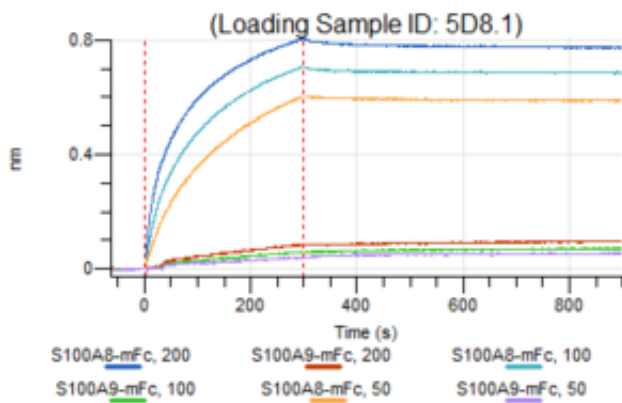


## Mouse monoclonal antibody to human S100-A8 protein, clone 5D8

Catalogue #	620-100
Immunogen:	Human S100-A8
Alternative Names:	Calgranulin-A, Calprotectin L1L subunit, Cystic fibrosis antigen (CFAG), Leukocyte L1 complex light chain, Migration inhibitory factor-related protein 8, S100 calcium-binding protein A8, Urinary stone protein band A
Uniprot ID:	P05109
Clonality:	Mouse monoclonal
Clone:	5D8
Class:	mIgG1
Reactivity:	Human S100-A8
Application:	ELISA
ELISA:	2 µg/ml
Purification:	Protein G purification
Buffer:	PBS with 50% glycerol
Shipping:	This product is shipped in non-frozen liquid form in ambient conditions
Storage:	Store at -20...-70°C upon receipt. Divide antibody into aliquots prior usage. Avoid multiple freeze-thaw cycles.



**Figure 1. Simply Blue Safe Stain SDS-PAGE analysis of Mouse Monoclonal antibody to human S100-A8, clone 5D8.** 4-12% gradient gel is used for analysis. Lane 1. Mouse Monoclonal antibody to human S100-A8, clone 5D8 (-DTT). Lane 2. Size marker. Lane 3. Mouse Monoclonal antibody to human S100-A8, clone 5D8 (+DTT)



**Figure 2. Octet RED96e analysis.** Antibody was loaded on sensor and binding of Human S100-A9 and S100-A8 protein was measured with different concentrations (200, 100, 50 nM). No cross-reactivity was detected with Human S100-A9.