

Mouse monoclonal antibody to human S100-A9 protein, clone 6G10

Catalogue #	610-100
Immunogen:	Human S100-A9
Alternative Names:	Calgranulin-B, Calprotectin L1H subunit, Leukocyte L1 complex heavy chain, Migration inhibitory factor-related protein 14, S100 calcium-binding protein A9
Uniprot ID:	P06702
Clonality:	Mouse monoclonal
Clone:	6G10
Class:	mIgG1
Reactivity:	Human S100-A9
Application:	ELISA
ELISA:	1-0,2 µg/ml
Purification:	Protein G purification
Buffer:	PBS with 50% glycerol
Shipping:	This product is shipped in non-frozen liquid form in ambient conditions
Storage:	Store at -20...-70°C upon receipt. Divide antibody into aliquots prior usage. Avoid multiple freeze-thaw cycles.

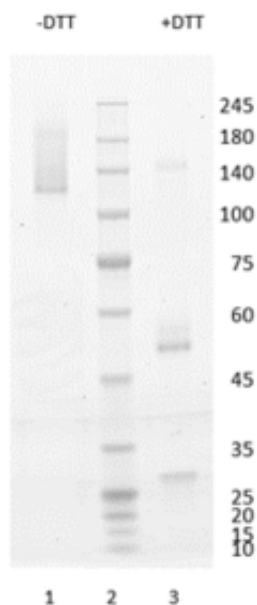


Figure 1. Simply Blue Safe Stained SDS-PAGE analysis of Mouse Monoclonal antibody to human S100-A9, clone 6G10. 4-12% gradient gel is used for analysis. Lane 1. Mouse Monoclonal antibody to human S100-A9, clone 6G10 (-DTT). Lane 2. Size marker. Lane 3. Mouse Monoclonal antibody to human S100-A9, clone 6G10 (+DTT).

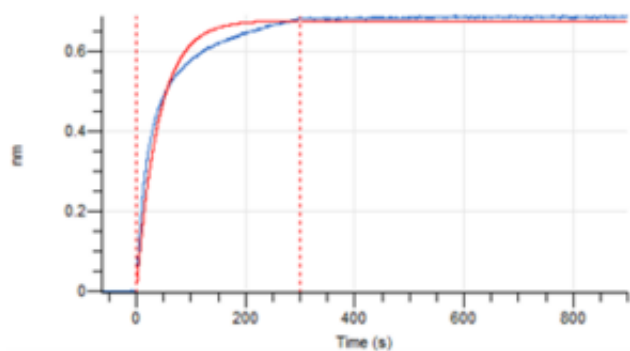


Figure 2. Octet RED96e analysis. Antibody was loaded on sensor and binding of Human S100-A9 protein was measured with different concentrations (200, 100, 50 nM).