

Rabbit polyclonal antibody to IgY, HRP conjugate

Catalogue #	903-100
Immunogen:	chicken IgY
Immunogen Description:	Purified IgY fraction
Class:	IgG
Reactivity:	Reacts with chicken IgY antibodies
Application:	ELISA, WB
Protocol:	Polyclonal antibody working titer has to be established practically for each particular antigen and assay format
ELISA:	0,03-0,05 µg/ml
Purification:	IgG fraction purified by IgY affinity chromatography
Buffer:	PBS pH 7.4, with 50% glycerol
Shipping:	This product is shipped in frozen format
Storage:	Store at -20...-70°C upon receipt. Divide antibody into aliquots prior usage. Avoid multiple freeze-thaw cycles

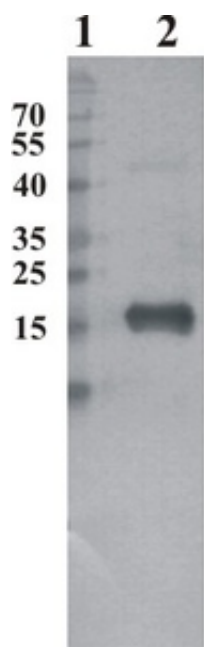


Figure 1. Western blot analysis for testing of Rabbit anti-chicken polyclonal antibody HRP conjugate as secondary antibody. Chicken anti-MANF polyclonal antibody (Icosagen) was used as primary antibody.

For secondary antibody testing purified human MANF protein was used. Line 1. PageRuler Prestained Protein Ladder (#SM0671 Fermentas); Line 2. Purified MANF protein. 100 ng of protein is loaded per lane