

## Mouse mAb to Hev b3 (Small rubber particle protein, SRPP) (clone 10)

Catalogue #	A3-705-100
Immunogen:	Hev b3
Immunogen Description:	Hev b3 MBP fusion protein expressed and purified from <i>E. coli</i> .
Alternative Names:	Small rubber particle protein - SRPP ( <i>Hevea brasiliensis</i> )
Uniprot ID:	O82803
Clonality:	Mouse monoclonal
Clone:	10
Class:	mIgG1
Reactivity:	Recombinant and native Hev b3
Application:	ELISA, WB
Protocol:	Monoclonal antibody working titer has to be established practically for each particular antigen and assay format
ELISA:	1 µg/ml. Reacts as detection antibody in capture ELISA with Hev b3 binding monoclonal antibody A3-704-100.
Purification:	Protein G purification
Buffer:	PBS, 0.1% sodium azide
Related Products:	A3-704-100 - mouse monoclonal antibody to Hev b3, used as a binding antibody in pair with detection antibody A3-705-100 in capture ELISA. Monoclonal antibodies to Hev b1, Hev b5 and Hev b6.02 are available.
Shipping:	This product is shipped in non-frozen liquid form in ambient conditions
Storage:	Store at - 20 ...-70 °C upon receipt. Divide antibody into aliquots prior usage. Avoid multiple

freeze-thaw cycles as product degradation may result

Background:

Liquid latex from the rubber tree, *Hevea brasiliensis*, is the source of natural rubber latex (NRL) and contains over 200 proteins; 14 of them have been identified as allergens. Only some allergens retain their allergenic properties through the manufacturing processes. The NRL allergens that have been shown to be clinically relevant to genuine NRL allergy, and present in the final NRL products with maintained allergenicity are Hev b1, Hev b3, Hev b5 and Hev b6.02

References

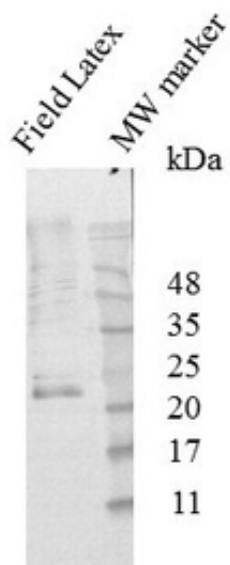
**ASTM D7427 - 08e1** Standard Test Method for Immunological Measurement of Four Principal Allergenic Proteins (Hev b 1, 3, 5 and 6.02) in Natural Rubber and Its Products Derived from Latex.

**Koh D, Ng V, Leow YH, Goh CL.** 2005.  
A study of natural rubber latex allergens in gloves used by healthcare workers in Singapore. *Br J Dermatol.* 153(5):954-9.

**Palosuo T, Alenius H, Turjanmaa K.** 2002.  
Quantitation of latex allergens. *Methods.* 27(1):52-8.

**Peixinho C, Tavares-Ratado P, Tomás MR, Taborda-Barata L, Tomaz CT.** 2008.  
Latex allergy: new insights to explain different sensitization profiles in different risk groups. *Br J Dermatol.* 159(1):132-6.

**Kang PB, Vogt K, Gruninger SE, Marshall M, Siew C, Meyer DM.** 2007.  
The immuno cross-reactivity of gutta percha points. *Dent Mater.* 23(3):380-4.



**Figure 1.** Western Blot testing of natural latex extract using anti-HevB3 antibody (A3-705-100, clone 1) Line 1. 10  $\mu$ l of 10x diluted natural latex extract were loaded per line. Line 2. Protein size marker.