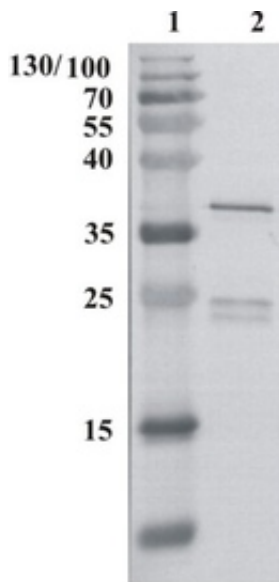


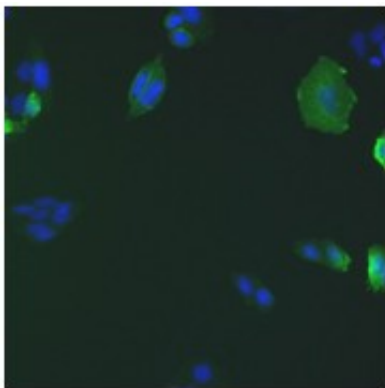
## Partially humanized, chimeric recombinant monoclonal antibody to HIV-1 p24 (clone 5)

Catalogue #	C-851-100
Immunogen:	HIV-1 p24
Immunogen Description:	Recombinant p24 protein of HIV-1 HAN consensus (purified from <i>E. coli</i> )
Clonality:	Human monoclonal
Clone:	5
Class:	hIgG1
Reactivity:	Reacts with HIV-1 p24 subtype B, C and A. Mapped to 48-62(TPQDLNTMLNTVGGH)
Application:	ELISA, WB
Protocol:	Monoclonal antibody working titer has to be established practically for each particular antigen and assay format.  For detection please use anti-human IgG antibody
ELISA:	0.16 to 0.3 µg/ml
IF:	1 to 10 µg/ml
Purification:	Protein G purification
Buffer:	PBS pH 7.4, 50% glycerole
Related Products:	Mouse anti-HIV 1 p24 monoclonal antibody clone 5 A2-851-100. HIV-1 p24 monoclonal antibodies.
Shipping:	This product is shipped in non-frozen liquid form in ambient conditions
Storage:	Store at -20...-70°C upon receipt. Divide antibody into aliquots prior usage. Avoid multiple freeze-thaw cycles
Background:	Antibody is derived from mouse anti-HIV-1 (HAN subtype) p17/24 monoclonal antibody clone 5

expressing mouse hybridoma culture. cDNA of antibody variable regions were isolated and cloned into the human IgG1 constant region-containing antibody expression vector. Partially humanized, chimeric antibody was expressed by QMCF CHOEBNALT85 cell line. Antibody is used for high-specific efficient detection of soluble or membrane-bound proteins fused with 05-001 epitope-tag sequence.



**Figure 1.** Western-Blot analysis of HIV-1 HAN subtype p17/24 protein using chimeric HIV-1 p24 antibody, clone 5. Line 1. Protein size marker Line 2. HIV-1 p17/24 20 ng per lane.



**Figure 2.** IF analysis using chimeric HIV-1 p24 antibody, clone 5. ETAR (Endothelin A receptor) is fused with 05-001 epitope tag, expressed in CHOEBNALT85 cell line and detected in IF assay.