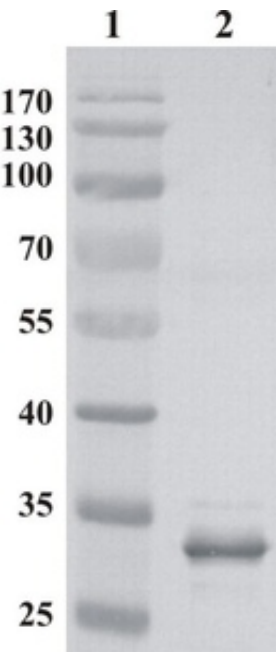


## Mouse mAb to MLV p30 (clone 4B2)

Catalogue #	A2-301-100
Immunogen:	MLV p30
Immunogen Description:	Full length recombinant MLV-Gag p30 capsid protein, purified from <i>E. coli</i>
Clonality:	Mouse monoclonal
Clone:	4B2
Class:	IgG
Reactivity:	MLV Gag, p30
Application:	ELISA, WB
Protocol:	Monoclonal antibody working titer has to be established practically for each particular antigen and assay format
ELISA:	0,05-0,1 µg/ml
Purification:	Protein G purification
Buffer:	PBS pH 7.4, 0.1% sodium azide
Shipping:	This product is shipped in non-frozen liquid form in ambient conditions
Storage:	Store at -20...-70 °C upon receipt. Divide antibody into aliquots prior usage. Avoid multiple freeze-thaw cycles
Background:	Murine leukemia viruses belong to family of Retroviruses group and are named for their ability to cause cancer in mice. Some form of MLV's are used in cancer research. The retroviral Gag protein plays important roles at several stages in the viral life cycle. Late in infection, the Gag precursor protein acts to mediate the assembly and release of virion particles. After budding, the core matures by cleavage of Gag precursor protein into the mature core proteins, the matrix (MA), capsid (CA) and nucleocapsid proteins. These separated Gag proteins then play roles in

the early stages of infection



**Figure 1. Western Blot testing of MLV-gag antibody, clone 4B2.** Line 1. PageRuler Prestained Protein Ladder (#SM0671, lot: 00052778, Fermentas); Line 2. MLV-gag p30 recombinant protein expressed in E.coli