

Rabbit polyclonal antibody to MLV-Gag protein

Catalogue #	A1-910-100
Immunogen:	MLV p30
Immunogen Description:	Full length recombinant MLV-Gag p30 capsid protein, isolate FB29, purified from <i>E. coli</i>
Clonality:	Polyclonal
Class:	IgG
Reactivity:	MLV Gag, p30
Application:	ELISA, WB
Protocol:	Polyclonal antibody working titer has to be established practically for each particular antigen and assay format
ELISA:	0,01 µg/ml
Purification:	MLV p30 affinity purified
Buffer:	Ammonium sulphate, saturated (PBS pH 7.4)
Shipping:	This product is shipped in non-frozen liquid form in ambient conditions
Storage:	Store at +4°C upon receipt. As product is (NH ₄) ₂ SO ₄ precipitate, mix well by pipetting or vortexing prior use
Background:	Murine leukemia viruses belong to family of Retroviruses group and are named for their ability to cause cancer in mice. Some form of MLV's are used in cancer research. The retroviral Gag protein plays important roles at several stages in the viral life cycle. Late in infection, the Gag precursor protein acts to mediate the assembly and release of virion particles. After budding, the core matures by cleavage of Gag precursor protein into the mature core proteins, the matrix (MA), capsid (CA) and nucleocapsid proteins. These separated Gag proteins then play roles in the early stages of infection

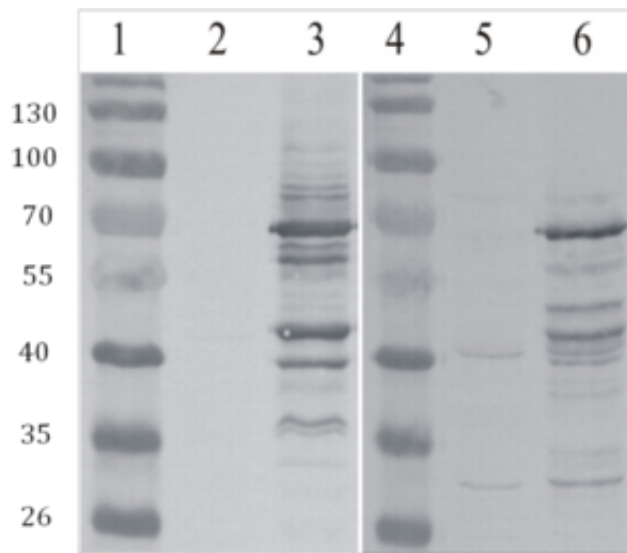


Figure 1. Western Blot testing of MLV-gag antibody. Line 1. PageRuler Prestained Protein Ladder (#SM0671, lot: 00052778, Fermentas); Line 2. HEK293 cells; Line 3. MLV-gag protein expressed in HEK293 cells; Line 4. PageRuler Prestained Protein Ladder (#SM0671, lot: 00052778, Fermentas); Line 5. CHO cells; Line 6. MLV-gag protein expressed in CHO cells. 10 000 cells were lysed and loaded into each lane.