

Mouse mAb to human laminin a5 (clone 4B12)

Catalogue #	A2-610-100
Immunogen:	Human laminin a5
Immunogen Description:	Laminin purified from human placenta (Chemicon)
Clonality:	Mouse monoclonal
Clone:	4B12
Class:	mIgG1
Reactivity:	Human laminin ?5
Application:	ELISA, IP, IHC
Protocol:	This antibody does not work in WB Monoclonal antibody working titer has to be established practically for each particular antigen and assay format
ELISA:	0,05-0,1 µg/ml
IP:	0,5 mg/ml
Purification:	Protein G purification
Buffer:	PBS pH 7.4, with 0.1% sodium azide
Shipping:	This product is shipped in non-frozen liquid form in ambient conditions
Storage:	Store at -20...-70°C upon receipt. Divide antibody into aliquots prior usage. Avoid multiple freeze-thaw cycles
Background:	Laminins are a family of large heterotrimeric proteins that promote cell adhesion and migration via integrins and other cell-surface receptors. They are major components of basement membranes of blood vessels and other tissue compartments, and are synthesized by numerous cell types. Through combination, laminin chains constitute 15 laminin isoforms. Laminin isoforms, particularly their ? chain, are expressed in a cell-

and tissue-specific manner, and are differentially recognized by integrins

References

Wondimu Z, Geberhiwot T, Ingerpuu S, Juronen E, Xie X, Lindbom L, Doi M, Kortessmäa J, Thyboll J, Tryggvason K, Fadeel B, Patarroyo M. 2004.

An endothelial laminin isoform, laminin-8 (α4β1γ1), is secreted by blood neutrophils, promotes neutrophil migration and extravasation, and protects neutrophils from apoptosis. *Blood*, 104(6):1859-66

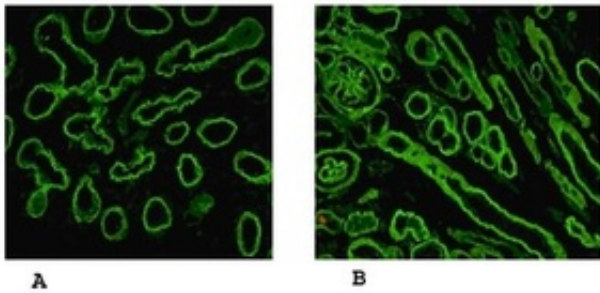


Figure 1. Reactivity of laminin α5 chain specific monoclonal antibody 4B12 on human embryonic lung alveolar epithelium (A) and kidney (B) preparation