

Mouse mAb to HPV18 E7 (clone 8E2)

Catalogue #	A2-406-100
Immunogen:	HPV-18 E7
Immunogen Description:	Recombinant full-length HPV-18 E7-protein purified from <i>E. coli</i>
Clonality:	Mouse monoclonal
Clone:	8E2
Class:	mIgG1
Reactivity:	Reacts with HPV-18 E7-protein. Mapped to amino acids 36-70
Application:	ELISA, WB, IF, IP
Protocol:	Monoclonal antibody working titer has to be established practically for each particular antigen and assay format
ELISA:	0,05-0,1 µg/ml
IF:	0,33-10 µg/ml
IP:	2 µg/ml
Purification:	Protein G purification
Buffer:	PBS pH 7.4, with 0.1% sodium azide
Storage:	Store at -20...-70°C upon receipt. Divide antibody into aliquots prior usage. Avoid multiple freeze-thaw cycles.
Background:	Human papillomaviruses (HPV) are small DNA viruses which infect epithelia of the skin and mucosa. Over 90 types have been identified and they mostly cause a variety of benign lesions such as warts and verrucae. However, some subtypes, notably types 16 and 18, 31 and 33, have been confirmed as agents which cause cervical cancer. Human Papillomavirus (HPV) E7 proteins have cellular transforming and trans-activating activities

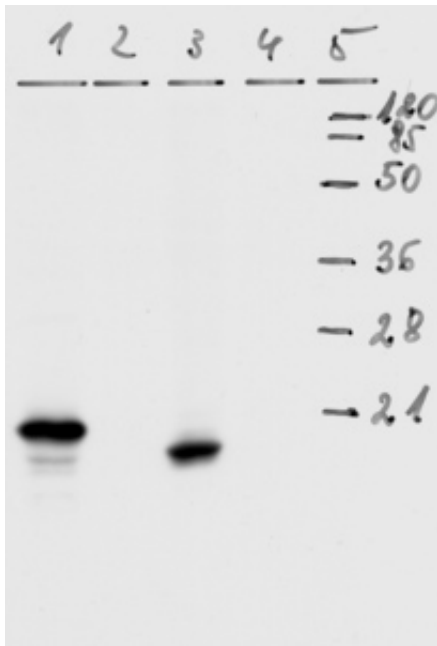


Figure 1. Western-Blot analysis of HPV-18 E7 protein. WB was carried out with 8E2 Mab using the lysates of U2OS, HeLa and SiHa cells. Line 1. U2OS with plasmid expressing E7 protein, Line 2. plain U2OS cells. Line 3. Lysate of HeLa cells. HeLa cells are containing HPV-18 genome sequences expressing HPV E6 and E7 proteins. Line 4. Lysate of SiHa cells. SiHa cells are containing HPV-16 genome sequence, Line 5. Protein size marker

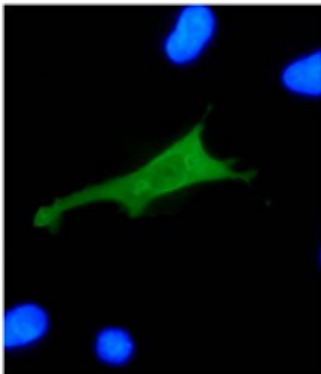


Figure 2. IF analysis of HPV-18 E7 protein in U2OS cells. IF was carried out with U2OS cells transfected with plasmid expressing HPV-18 E7 protein. All the nuclei were stained by DAPI. Green color represents nucleus-localized HPV-18 E7 detected by Mab 8E2. IF analysis of E7 protein show similar result also in HeLa cells

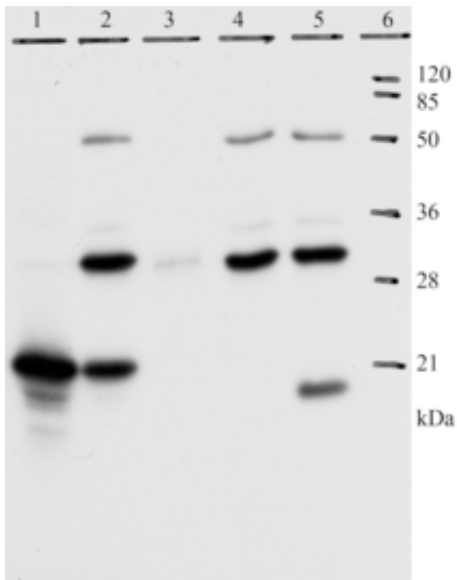


Figure 3. IP analysis of HPV-18 E7 protein. Lane 1: detection of E7 protein, tagged by BPV epitope tag 5E11 by Mab 8E2 in lysate of U2OS cells. Lane 2: the lower band is precipitated E7, upper bands are light and heavy chain of Mab. Lane 3: precipitation without mab 8E2. Lanes 4 and 5: IP exp. with non-transfected U2OS and HeLa cells, respectively. Lower band corresponds to native HPV-18 E7 protein expressed by HPV-18 genome expressed in Hela cells. Lane 6: marker