

Mouse mAb to HPV11 E7 (clone 8G6)

Catalogue #	A2-404-100
Immunogen:	HPV-11 E7
Immunogen Description:	Recombinant full-length HPV-11 E7-protein purified from <i>E. coli</i>
Clonality:	Mouse monoclonal
Clone:	8G6
Class:	mIgG2a
Reactivity:	Reacts with HPV-11 E7-protein. Mapped to amino acids 1-35
Application:	ELISA, WB, IF, IP
Protocol:	Monoclonal antibody working titer has to be established practically for each particular antigen and assay format
ELISA:	0,045-0,09 µg/ml
IF:	1,8 µg/ml
Purification:	Protein G purification
Buffer:	PBS pH 7.4, with 0.1% sodium azide
Shipping:	This product is shipped in non-frozen liquid form in ambient conditions
Storage:	Store at -20...-70°C upon receipt. Divide antibody into aliquots prior usage. Avoid multiple freeze-thaw cycles
Background:	Human papillomaviruses (HPV) are small DNA viruses which infect epithelia of the skin and mucosa. Over 90 types have been identified and they mostly cause a variety of benign lesions such as warts and verrucae. However, some subtypes, notably types 16 and 18, 31 and 33, have been confirmed as agents which cause cervical cancer. Human Papillomavirus (HPV) E7 proteins have cellular transforming and trans-activating activities

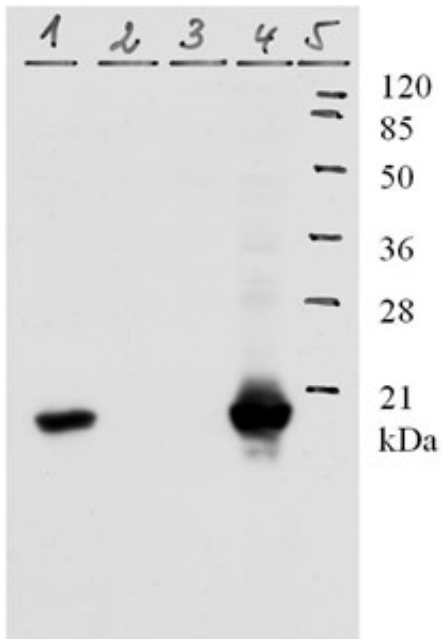


Figure 1. Western-Blot analysis of HPV-11 E7 protein. WB was carried out with 8G6 Mab using the lysates of U2OS and Hela cells. Lines 1 and 4 are according cells transfected with plasmid expressing HPV-11 E7 protein, Lines 2 and 3 non-transfected U2OS and Hela cells. Line 5. Protein size marker

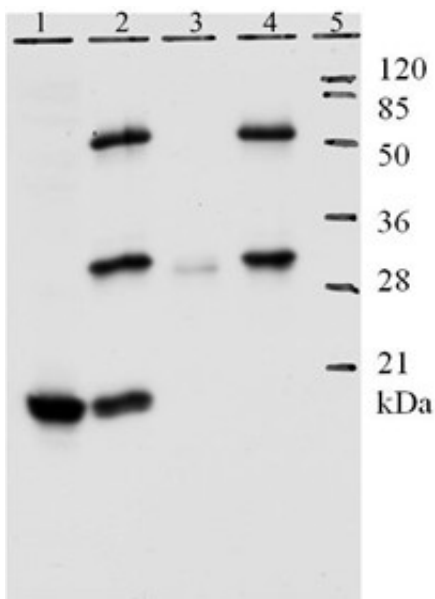


Figure 2. IP analysis of HPV-11 E7 protein. Line 1. shows detection of E7 protein by mAB 8G6 in lysate of U2OS cells. Line 2. the lower band is precipitated E7, upper bands are light and heavy chain of Mab. Line 3. precipitation without mAB 8G6 Line 4. Non-transfected U2OS cells. Line 5. Protein size marker

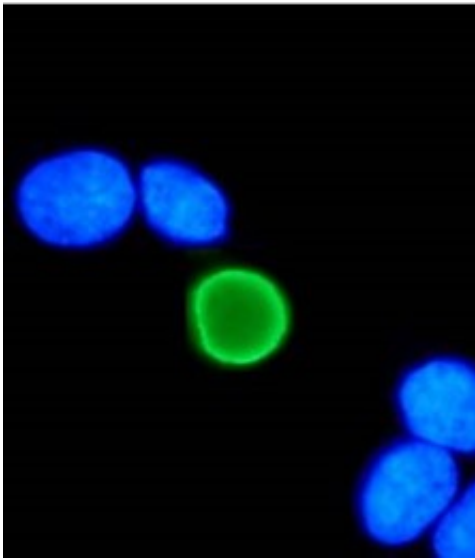


Figure 3. IF analysis of HPV-11 E7 protein in U2OS cells. IF was carried out with U2OS cells transfected with plasmid expressing HPV-11 E7 protein. All the nuclei were stained by DAPI. Green color represents nucleus-localized HPV-11 E7 detected by Mab 8G6. IF analysis of E7 protein show similar result also in HeLa cells