

Recombinant antibody HCV 1b NS5B (clone R9A2)

Catalogue #	C2-424-100
Immunogen:	HCV 1b NS5B
Immunogen Description:	Recombinant Hepatitis C Virus subtype 1b non-structural protein 5B (NS5B) RNA-dependent RNA polymerase (RdRp)
Uniprot ID:	Q9WMX2
Clonality:	Human monoclonal
Clone:	R9A2
Class:	hIgG1
Reactivity:	Human, HCV subtype 1b NS5B, Epitope mapped to amino acids 111-130 (LSSKAVNHIRSVWKDLLEDT)
Application:	ELISA, WB, IF
Protocol:	Monoclonal antibody working titer has to be established practically for each particular antigen and assay format.
ELISA:	5 - 10 µg/ml
IF:	dilution 1:1000
Purification:	Protein G purification
Buffer:	PBS pH 7.4, with 0.1% sodium azide
Related Products:	This antibody is derived from A2-424-100 mouse monoclonal antibody to HCV 1b NS5B, clone 9A2. HCV subtype 1b monoclonal antibodies. For more information visit www.icosagen.com/products/?antibodies
Shipping:	This product is shipped in non-frozen liquid form in ambient conditions
Storage:	Store at - 20 ...-70 °C upon receipt. Divide antibody into aliquots prior usage. Avoid multiple freeze-thaw cycles as product degradation may result.

Background:

Non-structural protein 5B (NS5B) represents the RNA-dependent RNA polymerase (RdRp) of Hepatitis C Virus, which is a small positive strand RNA virus in the family Flaviviridae. HCV is a major causative agent of acute and chronic hepatitis, hepatocellular carcinoma and liver cirrhosis. The single subunit RNA-dependent RNA polymerase is absolutely essential for the viral replication. Antibody is derived from mouse anti-HCV NS5B monoclonal antibody 9A2 expressing mouse hybridoma culture. cDNA of antibody variable regions were isolated and cloned into the human IgG1 constant region-containing antibody expression vector. Partially humanized, chimeric antibody was expressed by QMCF CHOEBNALT85 cell line. Antibody is used for high-specific efficient detection of soluble or membrane-bound proteins fused with 9A2 epitope-tag sequence.

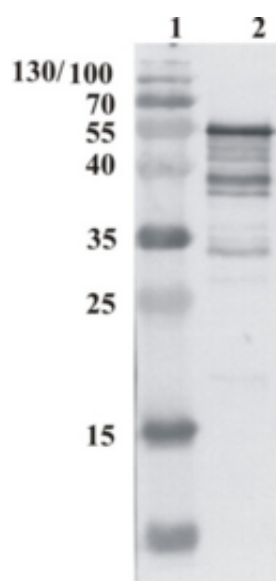


Figure 1. Western Blot testing of anti-HCV NS5B protein using chimeric anti-HCV NS5B antibody 9A2. Line 1. Protein size marker, Line 2. 20 ng of purified recombinant HCV NS5B was loaded per lane.

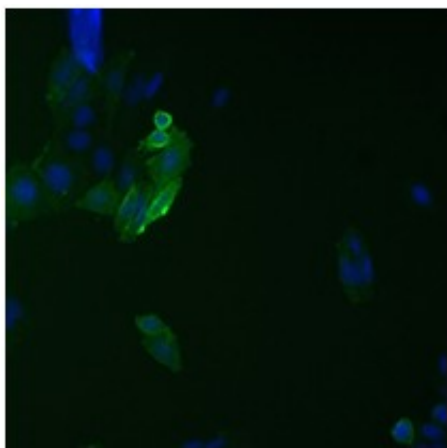


Figure 2. Immunofluorescence analysis on ETAR protein fused with 9A2 epitope tag. ETAR-9A2 is expressed in CHOEBNALT85 cell line.