

Mouse mAb to BPV type 1 E2-protein (clone 5E11)

| | |
|------------------------|--|
| Catalogue # | A1-100-100 |
| Immunogen: | BPV type 1 E2 |
| Immunogen Description: | Recombinant full length BPV type 1 E2 protein purified from <i>E. coli</i> |
| Uniprot ID: | P03122 |
| Clonality: | Mouse monoclonal |
| Clone: | 5E11 |
| Class: | IgG |
| Reactivity: | Bovine, BPV type 1 E2 protein amino acids 199-208 (SSTSSDFRDR) |
| Application: | ELISA, WB, IF, IP |
| Protocol: | Monoclonal antibody working titer has to be established practically for each particular antigen and assay format. |
| ELISA: | 0.02 µg/ml |
| IF: | 0.4-24 µg/ml |
| Purification: | Protein G purification |
| Buffer: | PBS with 50% glycerol |
| Related Products: | 9 different monoclonal antibodies to BPV type 1 E2 protein. For more information and ordering see full list: www.icosagen.com/products/?antibodies |
| Shipping: | This product is shipped in non-frozen liquid form in ambient conditions |
| Storage: | Store at -20 or -70°C upon receipt. Divide antibody into aliquots prior usage. Avoid multiple freeze-thaw cycles as product degradation may result |
| Background: | E2 protein plays a central role in the viral life cycle as it regulates both transcription and |

replication of the viral genome. Can either activate or repress transcription. The E1-E2 protein complex binds to the origin of DNA replication activating replication of the BPV

References

Koljak R, Järving I, Kurg R, Boeglin WE, Varvas K, Valmsen K, Ustav M, Brash AB, and Samel N. 2001.

The basis of prostaglandin synthesis in coral, J. Biol. Chem., 276: 7033-7040.

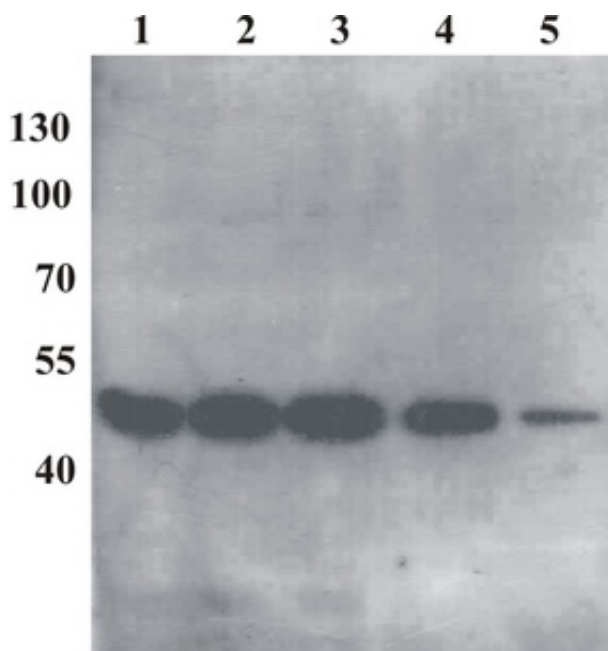
Nigul L, Olspert A, Meier M, Paves M, Talpsep T, and Truve E. 2004.

New Plant vectors for Protein Tagging with E2 Epitope, Plant Molecular Biology Reporter, 4: 399 – 407.

Mannan

AU, Boehm J, Sauter SM, Rauber A, Byrne PC, Neesen J, and Engel W. 2006. Spastin, the most commonly mutated protein in hereditary spastic paraplegia interacts with reticulon 1 an endoplasmic reticulum protein. Neurogenetics 7: 93-103.

A



B

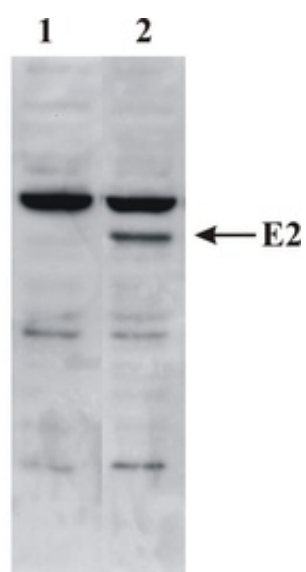
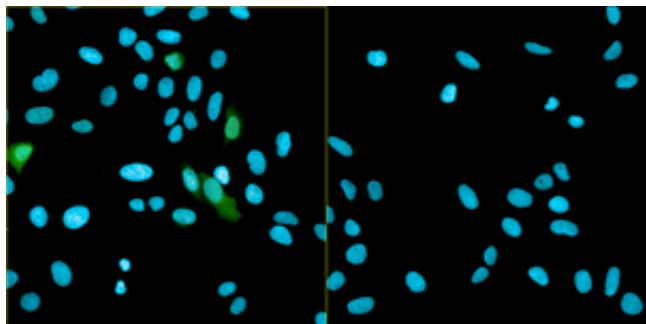


Figure 1. Western Blot testing of anti-BPV E2 monoclonal antibody (5E11).

A: Testing of purified recombinant BPV E2. Different amount of purified protein was loaded into the gel. Lane 1. 30 ng; Lane 2. 15 ng; Lane 3. 10 ng; Lane 4. 5 ng; Lane 5. 1 ng.

B: Testing of BPV E2 expressed in CHO cell line. Lane 1. Cell lysate of CHO cells. Lane 2. Cell lysate of CHO cells stably expressing BPV E2

A



B

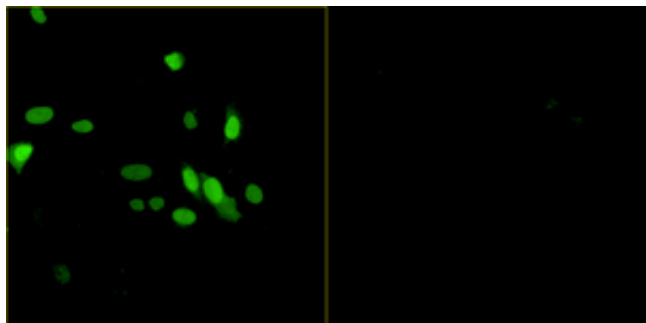


Figure 2. Immunofluorescence testing of anti-BPV E2 monoclonal antibody (5E11).

Assay was carried out with U2OS cells expressing BPV E2 protein. Antibody concentration of 1 µg/ml was used. Nuclei were stained by DAPI. Fluorescence was measured at (A) 460 nm and 488 nm wavelengths or (B) 488 nm only.