

Mouse mAb to BPV type 1 E2 protein (clone 1H10)

Catalogue #	A1-155-100
Immunogen:	BPV type 1 E2
Immunogen Description:	Recombinant full length BPV type 1 E2 protein purified from <i>E. coli</i>
Uniprot ID:	P03122
Clonality:	Mouse monoclonal
Clone:	1H10
Class:	IgG
Reactivity:	Bovine, BPV type 1 E2 protein, mapped to amino acids 208-218 (PPDGVWASEG)
Application:	ELISA, WB, IF
Protocol:	Monoclonal antibody working titer has to be established practically for each particular antigen and assay format.
ELISA:	0,2-1 µg/ml
IF:	1 µg/ml
Purification:	Protein A purification
Buffer:	PBS with 50% glycerol
Related Products:	9 different monoclonal antibodies to BPV type 1 E2 protein. For more information and ordering see full list: www.icosagen.com/products/?antibodies
Shipping:	This product is shipped in non-frozen liquid form in ambient conditions
Storage:	Store at – 20 or -70 °C upon receipt. Divide antibody into aliquots prior usage. Avoid multiple freeze-thaw cycles as product degradation may result.
Background:	E2 protein plays a central role in the viral life cycle as it regulates both transcription and

replication of the viral genome. Can either activate or repress transcription. The E1-E2 protein complex binds to the origin of DNA replication activating replication of the BPV

References

- Kurg R, Parik J, Juronen E, Sedman T, Abroi A, Liiv I, Langel Ü, and Ustav M.** 1999. Effect of bovine papillomavirus E2 protein-specific monoclonal antibodies on papillomavirus DNA replication, J Virol. 73: 4670-77.
- Kurg R, Tekkel H, Abroi A, and Ustav M.** 2006. Characterization of the functional activities of the bovine papillomavirus type 1 E2 protein single-chain heterodimers, J Virol. 80(22): 11218-25

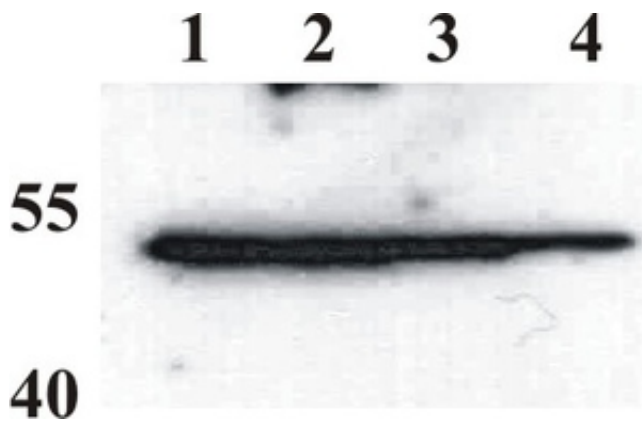
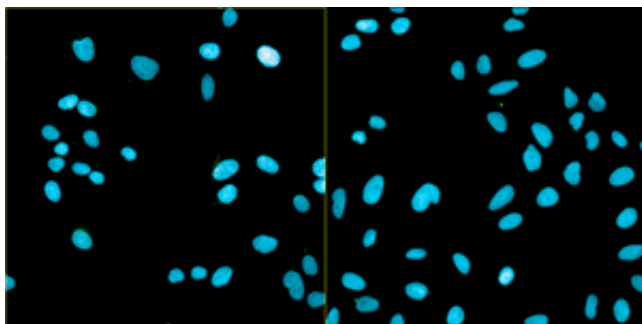


Figure 1. Western Blot testing of anti-BPV E2 monoclonal antibody (1E2). Testing recombinant purified BPV E2 protein. Different amounts of purified recombinant BPV E2 protein were loaded. Lane 1. 10 ng; Lane 2. 5 ng; Lane 3. 1 ng; Lane 4. 0.5 ng

A.



B.

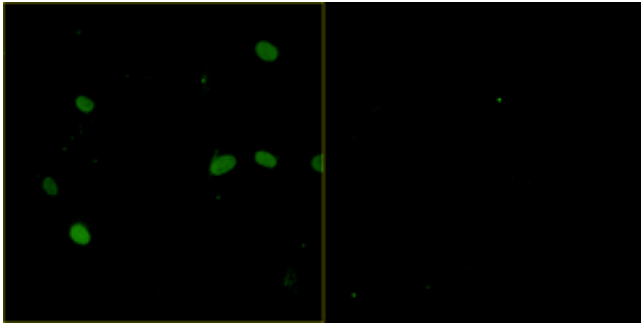


Figure 2. Immunofluorescence testing of anti-BPV E2 monoclonal antibody (1H10). Assay was carried out with U2OS cells expressing BPV E2 protein. Antibody concentration of 1 $\mu\text{g/ml}$ was used. Nuclei were stained by DAPI. Fluorescence was measured at (A) 460 nm and 488 nm wavelengths or (B) 488 nm only.