

Mouse monoclonal antibody to BPV type 1 E2 (clone 1E4)

| | |
|------------------------|--|
| Catalogue # | A1-151-100 |
| Immunogen: | BPV type 1 E2 |
| Immunogen Description: | Recombinant full length BPV type 1 E2 protein purified from <i>E. coli</i> |
| Uniprot ID: | P03122 |
| Clonality: | Mouse monoclonal |
| Clone: | 1E4 |
| Class: | IgG |
| Reactivity: | Bovine, BPV type 1 E2 protein, mapped to amino acids 250-280 |
| Application: | ELISA, WB, IF |
| Protocol: | Monoclonal antibody working titer has to be established practically for each particular antigen and assay format. |
| ELISA: | 1 µg/ml |
| IF: | 0 - 20 µg/ml |
| Purification: | Protein A purification |
| Buffer: | PBS with 50% glycerol |
| Related Products: | 9 different monoclonal antibodies to BPV type 1 E2 protein. For more information and ordering see full list: www.icosagen.com/products/?antibodies |
| Shipping: | This product is shipped in non-frozen liquid form in ambient conditions |
| Storage: | Store at -20 °C to -70 °C upon receipt. Divide antibody into aliquots prior usage. Avoid multiple freeze-thaw cycles as product degradation may result. |
| Background: | E2 protein plays a central role in the viral life cycle as it regulates both transcription and |

replication of the viral genome. Can either activate or repress transcription. The E1-E2 protein complex binds to the origin of DNA replication activating replication of the BPV

References

- Kurg R, Parik J, Juronen E, Sedman T, Abroi A, Liiv I, Langel Ü, and Ustav M.** 1999. Effect of bovine papillomavirus E2 protein-specific monoclonal antibodies on papillomavirus DNA replication, J Virol. 73: 4670-77.
- Kurg R, Tekkel H, Abroi A, and Ustav M.** 2006. Characterization of the functional activities of the bovine papillomavirus type 1 E2 protein single-chain heterodimers, J Virol. 80(22): 11218-25

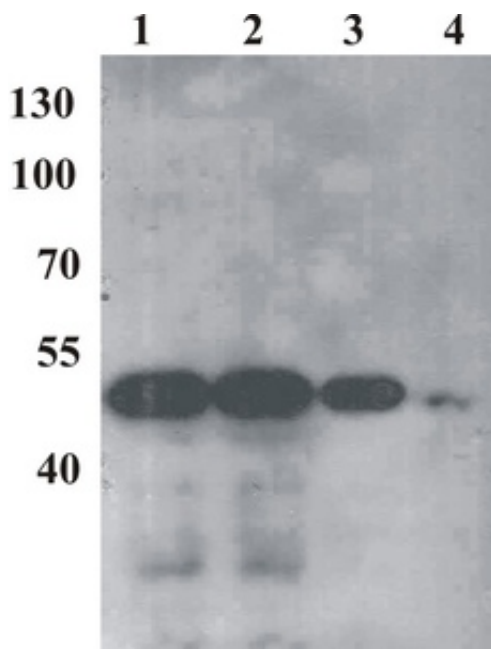
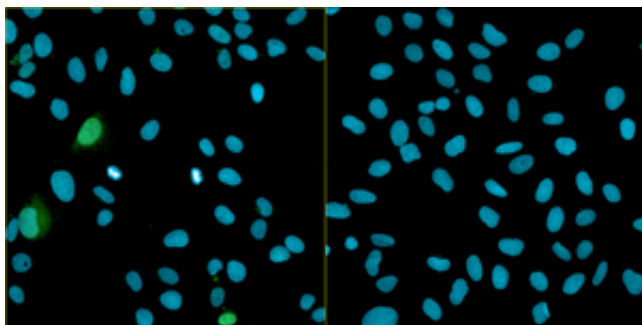


Figure 1. Western Blot testing of anti-BPV E2 monoclonal antibody (1E4). Different amount of purified recombinant E2 protein was loaded. Lane 1. 15 ng; Lane 2. 10 ng; Lane 3. 5 ng; Lane 4. 1 ng

A.



B.

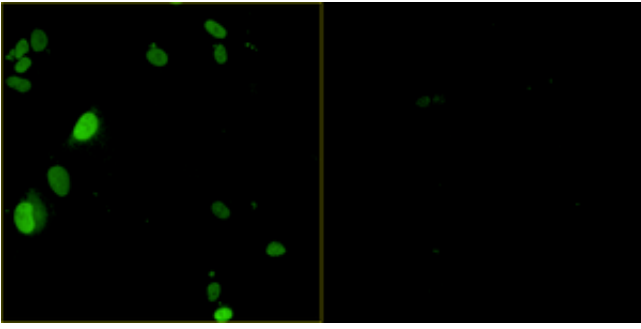


Figure 2. Immunofluorescence testing of anti-BPV E2 monoclonal antibody (1E4). Assay was carried out with U2OS cells expressing BPV E2 protein. Antibody concentration of 0.33 $\mu\text{g/ml}$ was used. Nuclei were stained by DAPI. Fluorescence was measured at (A) 460 nm and 488 nm wavelengths or (B) 488 nm only.