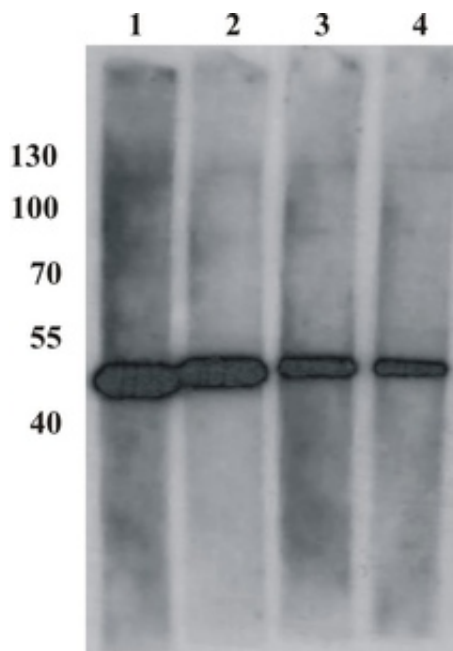


## Mouse mAb to BPV type 1 E2 protein (clone 1E2)

|                        |  |
|------------------------|--|
| Catalogue #            | A1-150-100   |
| Immunogen:             | BPV type 1 E2  |
| Immunogen Description: | Recombinant full length BPV type I E2 protein purified from <i>E. coli</i>   |
| Uniprot ID:            | P03122   |
| Clonality:             | Mouse monoclonal   |
| Clone:                 | 1E2  |
| Class:                 | IgG  |
| Reactivity:            | Bovine, BPV type 1 E2 protein, mapped to amino acids 182-190 (TTGHYSVRD)   |
| Application:           | ELISA, WB, IF, IP  |
| ELISA:                 | 0.2 - 1 µg/ml  |
| IF:                    | 0.33 - 1 µg/ml   |
| Purification:          | Protein A purification   |
| Buffer:                | PBS pH 7.4, 50% glycerol   |
| Related Products:      | Monoclonal antibodies to BPV type 1 E2 protein. For more information and ordering see full list: <a href="http://www.icosagen.com/products/?antibodies">www.icosagen.com/products/?antibodies</a>  |
| Shipping:              | This product is shipped in non-frozen liquid form in ambient conditions  |
| Storage:               | Store at – 20 or -70 °C upon receipt. Divide antibody into aliquots prior usage. Avoid multiple freeze-thaw cycles as product degradation may result   |
| Background:            | E2 protein plays a central role in the viral life cycle as it regulates both transcription and replication of the viral genome. Can either activate or repress transcription. The E1-E2 protein complex binds to the origin of DNA replication activating replication of the BPV |

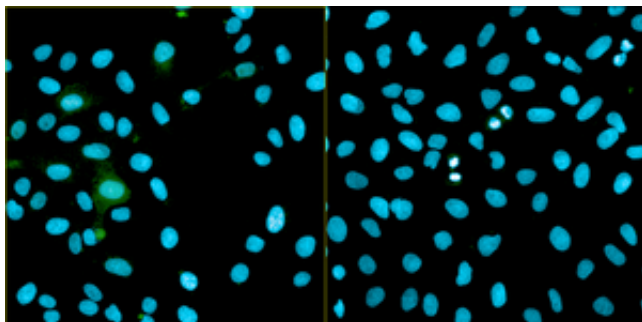
## References

- Kurg R, Parik J, Juronen E, Sedman T, Abroi A, Liiv I, Langel Ü, and Ustav M.** 1999. Effect of bovine papillomavirus E2 protein-specific monoclonal antibodies on papillomavirus DNA replication, *J Virol.* 73: 4670-77.
- Kurg R, Tekkel H, Abroi A, and Ustav M.** 2006. Characterization of the functional activities of the bovine papillomavirus type 1 E2 protein single-chain heterodimers, *J Virol.* 80(22): 11218-25

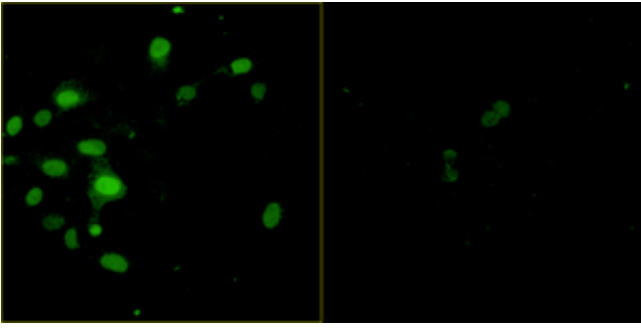


**Figure 1. Western Blot testing of anti-BPV E2 monoclonal antibody (1E2).** Testing BPV E2 protein-expressing Cos7 cell lysate. Different antibody dilutions were used for testing. Lane 1:500; Lane 2. 1:1000; Lane 3. 1:4000; Lane 4. 1:6000

A.



B.



**Figure 2. Immunofluorescence testing of anti-BPV E2 monoclonal antibody (1E2).** Assay was carried out with U2OS cells expressing BPV E2 protein. Antibody concentration of 0.33  $\mu\text{g/ml}$  was used. Nuclei were stained by DAPI. Fluorescence was measured at (A) 460 nm and 488 nm wavelengths or (B) 488 nm only.