

Anti-HEL Human IgG1-LALA isotype control

Catalogue #	R1-210-100
Immunogen:	Lysozyme from chicken egg white
Immunogen Description:	Lysozyme from chicken egg white
Clonality:	Human monoclonal
Class:	hIgG1-LALA
Application:	Isotype control antibody
Purification:	Protein A following gel filtration
Buffer:	PBS pH 7.4
QC:	Simply Blue Safe stained SDS-PAGE, analytical SEC
Shipping:	Shipped on dry ice.
Storage:	Store at -20 °C to -70 °C long term. Avoid multiple freeze-thaw cycles.

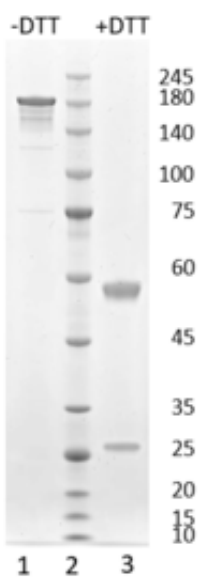


Figure 1. Simply Blue Safe stained SDS-PAGE analysis of anti-HEL Human IgG1-LALA isotype control. 4-12% gel is used for analysis. Lane 1. 0.8 µg Anti-HEL Human IgG1-LALA isotype control (-DTT) Lane 2. Size marker Lane 3. 0.8 µg Anti-HEL Human IgG1-LALA isotype control (+DTT)

Peak Table

Peak #	RT (min)	Area	Area %
1	8.851	2684.42	100.00

Chromatogram

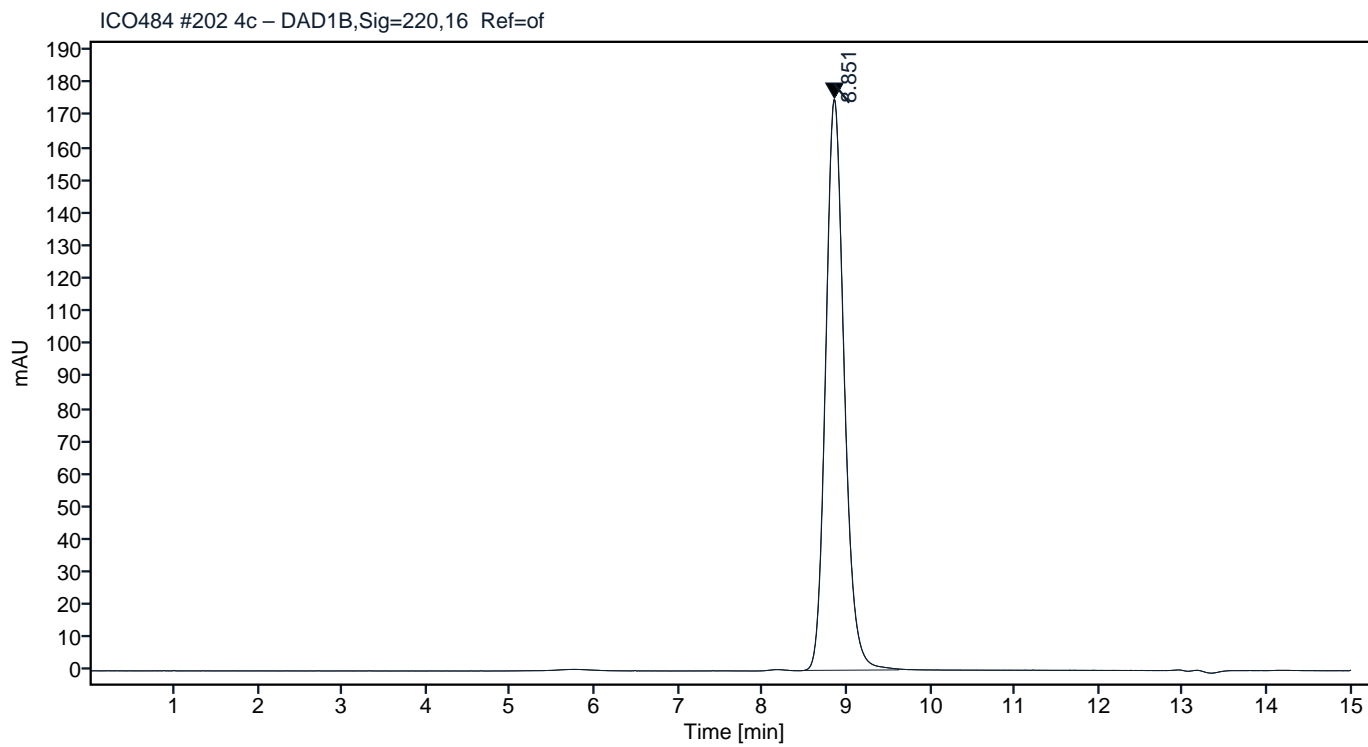


Figure 2. HPLC analytical SEC for final product.

Peak Table

Peak #	RT (min)	Area	Area %
1	8.864	2328.73	100.00

Chromatogram

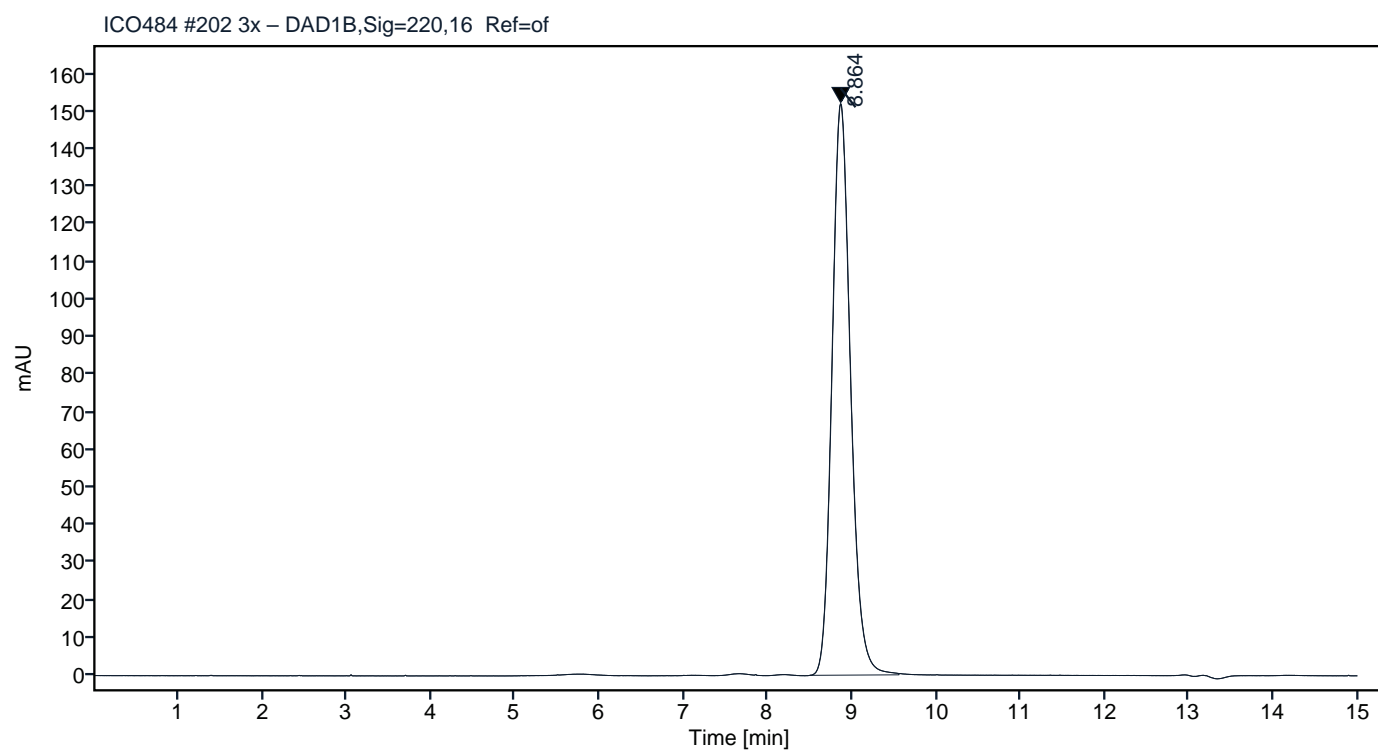


Figure 3. HPLC analytical SEC after 3 freeze-thaw cycles.