

Recombinant anti-human interleukin-6 antibody (clone 9E5)

Catalogue #	R1-643-100
Immunogen:	Recombinant hIL-6 protein
Immunogen Description:	Recombinant hIL-6 protein produced by CHO-based cell line (expressed by QMCF Technology).
Uniprot ID:	P05231
Clonality:	Human monoclonal
Clone:	9E5
Class:	hIgG1
Reactivity:	Reacts with human IL-6. No cross-reactivity with IL-1?, IL-1?, IL-2, IL-3, IL-4, IL-8, IFN? and TNF? proteins.
Application:	ELISA
Kd:	3.17 x 10 ⁻⁹ M
Purification:	Protein A affinity chromatography following desalting
Buffer:	PBS pH 7.4
QC:	Simply Blue Safe stained SDS-PAGE, analytical SEC, Octet BLI analysis
Shipping:	Shipped with blue ice.
Storage:	Store at +4 °C.

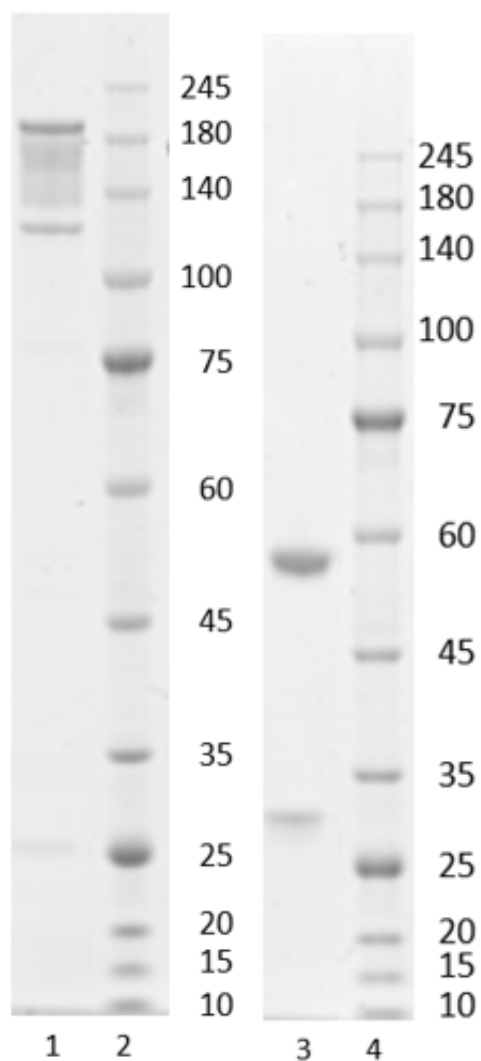


Figure 1. Simply Blue Safe stained SDS-PAGE analysis of recombinant anti-human interleukin-6 antibody, clone 9E5. 4-12% gel is used for analysis.

Peak Table

Peak #	RT (min)	Area	Area %
1	8.846	5093.40	100.00

Chromatogram

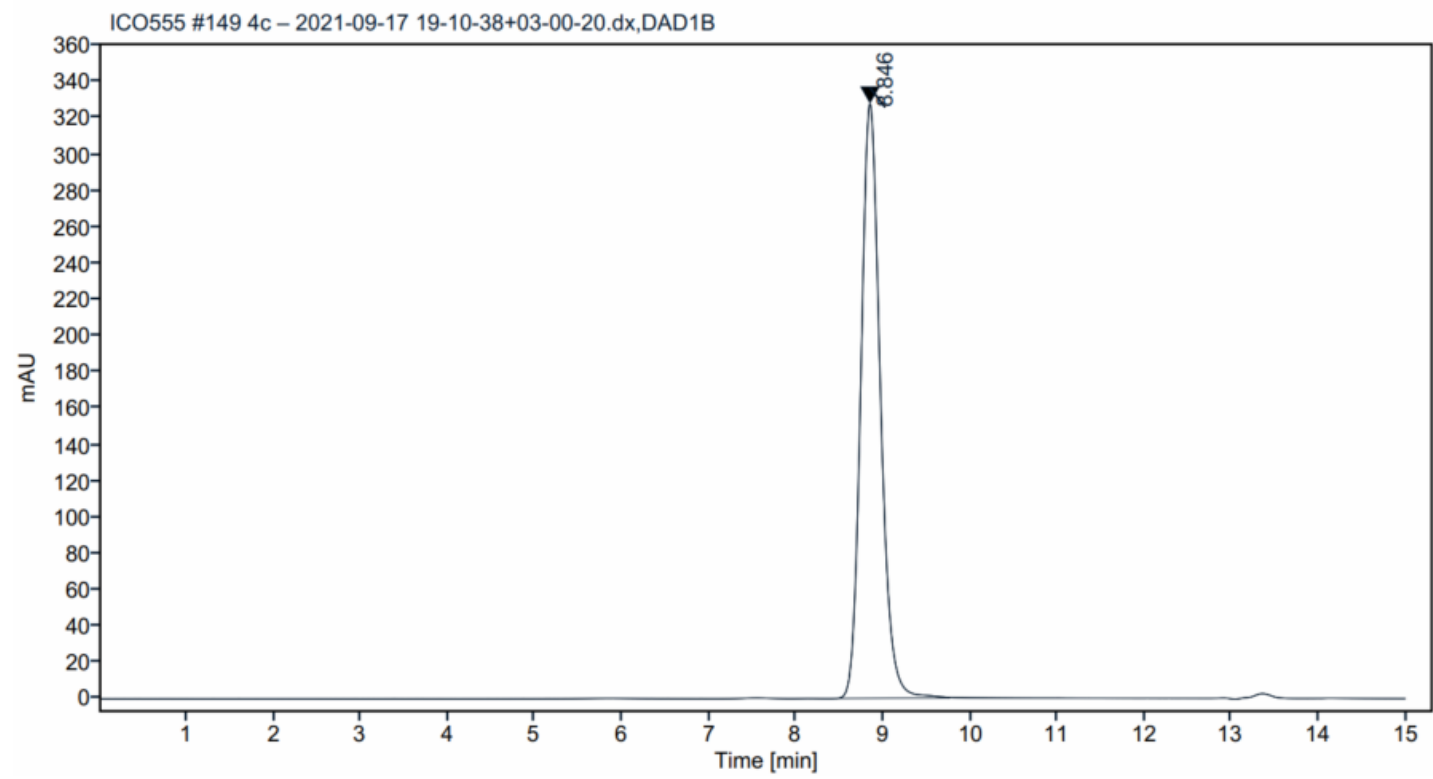


Figure 2. HPLC analytical SEC for final product.

Peak Table

Peak #	RT (min)	Area	Area %
1	8.847	4919.75	100.00

Chromatogram

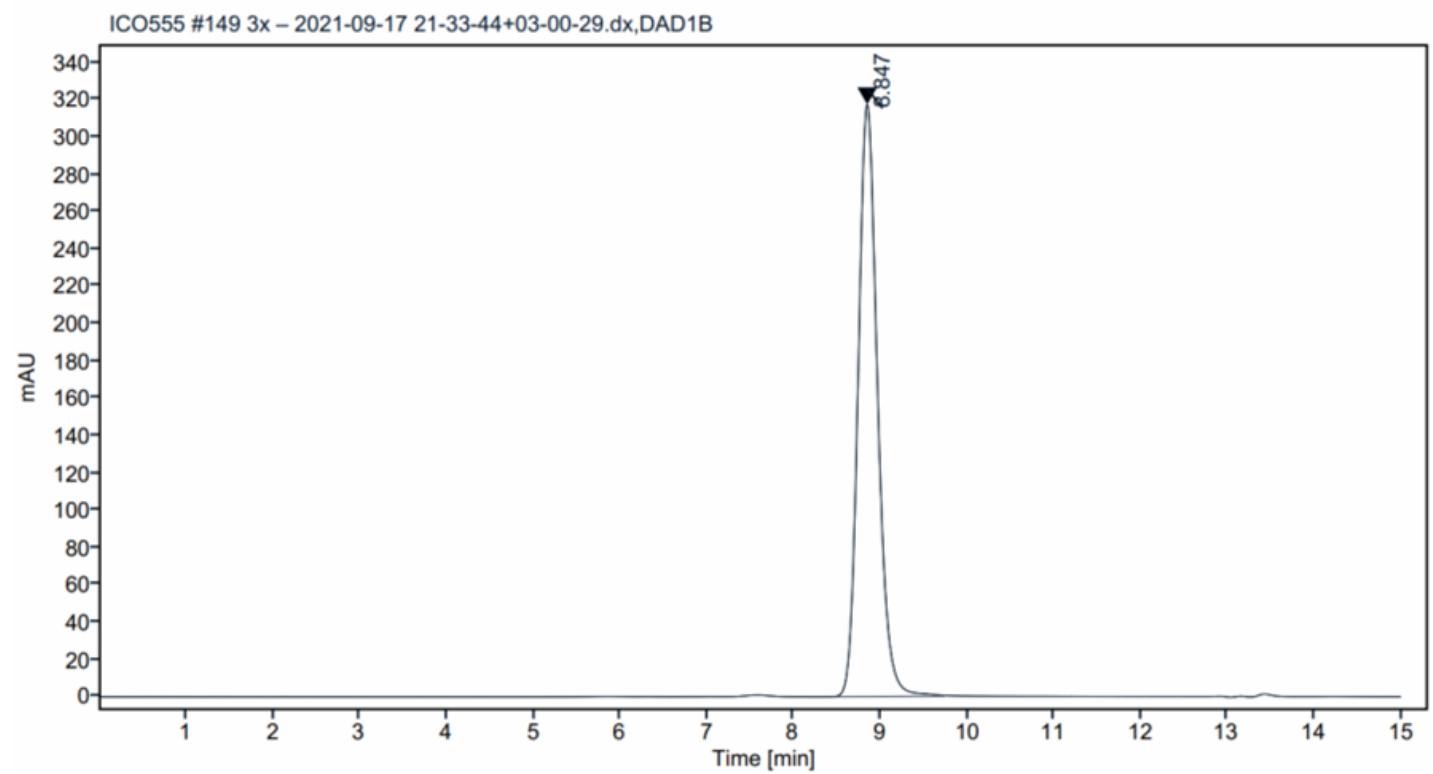


Figure 3. HPLC analytical SEC after 3 freeze-thaw cycles.

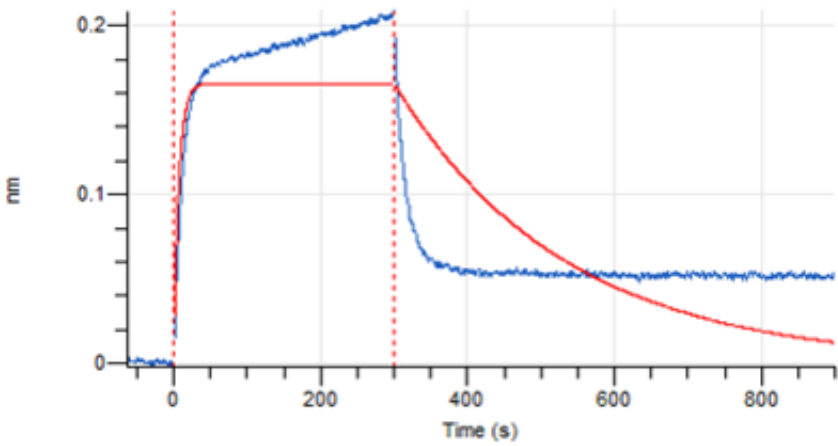


Figure 4. Octet BLI analysis, antibody was loaded on sensor for capture of IL-6 protein.