

Anti-HEL Human IgG2 isotype control

| | |
|------------------------|--|
| Catalogue # | R1-199-100 |
| Immunogen: | Lysozyme from chicken egg white |
| Immunogen Description: | Lysozyme from chicken egg white |
| Clonality: | Human monoclonal |
| Class: | hIgG2 |
| Reactivity: | Lysozyme from chicken egg white |
| Application: | Isotype control antibody |
| Purification: | Hitrap Mabselect Sure + Superdex 200 Increase |
| Buffer: | PBS pH 7.4 |
| QC: | Coomassie-stained SDS-PAGE and analytical SEC |
| Shipping: | This product is shipped on dry ice. |
| Storage: | Store at -20... -70°C upon receipt. Divide antibody into aliquots prior usage. Avoid multiple freeze-thaw cycles |

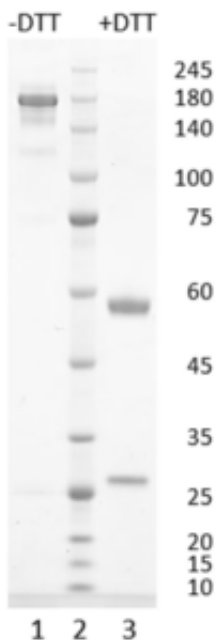


Figure 1. Simply Blue Safe stained SDS-PAGE analysis of anti-HEL Human IgG2 isotype control. 4-12% gel is used for analysis. Lane 1. Anti-HEL Human IgG2 isotype control (-DTT). Lane 2. Size marker. Lane 3. Anti-HEL Human IgG2 isotype control (+DTT).

Peak Table

| Peak # | RT (min) | Area | Area % |
|--------|----------|---------|--------|
| 1 | 7.619 | 45.71 | 2.04 |
| 2 | 8.980 | 2191.03 | 97.96 |

Chromatogram

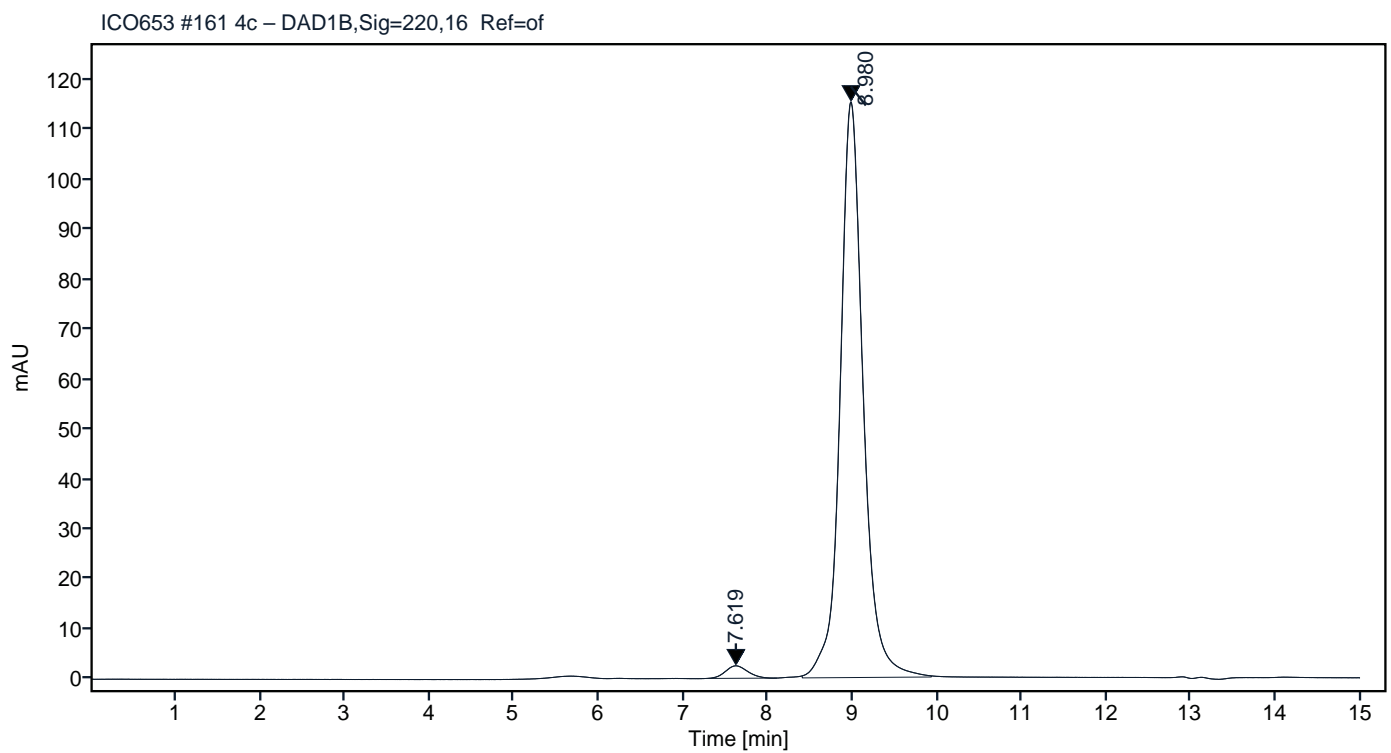


Figure 2. HPLC analytical SEC for final product.

Peak Table

| Peak # | RT (min) | Area | Area % |
|--------|----------|---------|--------|
| 1 | 7.622 | 50.29 | 2.35 |
| 2 | 8.978 | 2090.46 | 97.65 |

Chromatogram

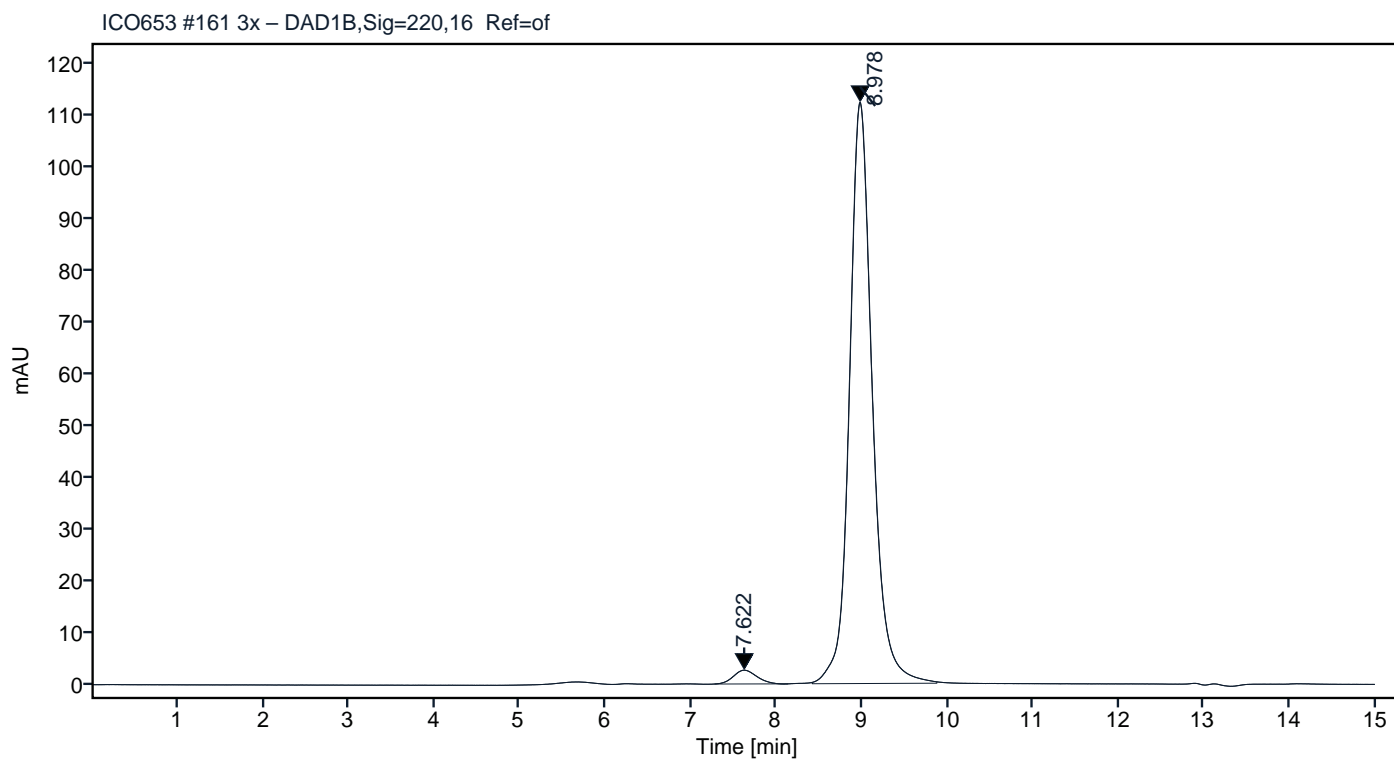


Figure 3. HPLC analytical SEC after 3 freeze-thaw cycles.