



SARS-CoV-2 Spike S1 Stealth Omicron (BA.2)

Catalogue #	P-375-100
Description:	Protein contains amino acids 14-681, mutations T19I, L24S, del25/27, G142D, V213G, G339D, S371F, S373P, S375F, T376A, D405N, R408S, K417N, N440K, S477N, T478K, E484A, Q493R, Q498R, N501Y, Y505H, D614G, H655Y, N679K, P681H, two extra amino acids (AS) in N-terminus, His-6 tag at C-terminus and GSG linker between protein and tag.
Uniprot ID:	P0DTC2
MW:	75.81 kDa
Host:	CHO-based cell line (expressed by QMCF Technology)
Purification:	Purified by Ni-affinity chromatography and gel-filtration from serum-free CHO growth media, sterile filtrated
Concentration:	1 mg/ml
Buffer:	PBS pH 7.4
Endotoxine:	NA
Bioproperties:	Measured by its binding ability to ACE2 protein by OCTET RED96 system.
QC:	SDS-PAGE, NanoDrop, A280 Analytical SEC, Octet binding to ACE2
Shipping:	Shipped on dry ice.
Storage:	Store at -70°C upon receipt. Recommended to aliquot into smaller quantities. Avoid repeated freeze-thaw cycles

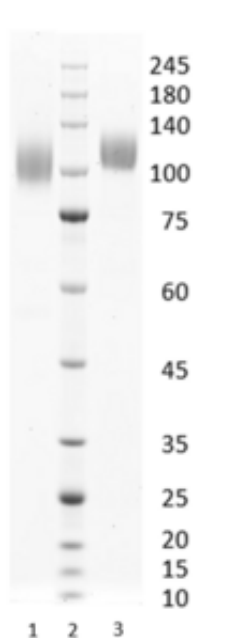


Figure 1. Simply Blue Safe stained SDS-PAGE analysis of SARS-CoV-2 Spike S1 Stealth Omicron (BA.2). 4-12% gradient gel is used for analysis. Lane 1. 0.8 μ g SARS-CoV-2 Spike S1 Stealth Omicron (BA.2) (-DTT). Lane 2. Protein marker (Smobio). Lane 3. 0.8 μ g SARS-CoV-2 Spike S1 Stealth Omicron (BA.2) (+DTT).

Peak Table

Peak #	RT (min)	Area	Area %
1	8.342	2334.14	100.00

Chromatogram

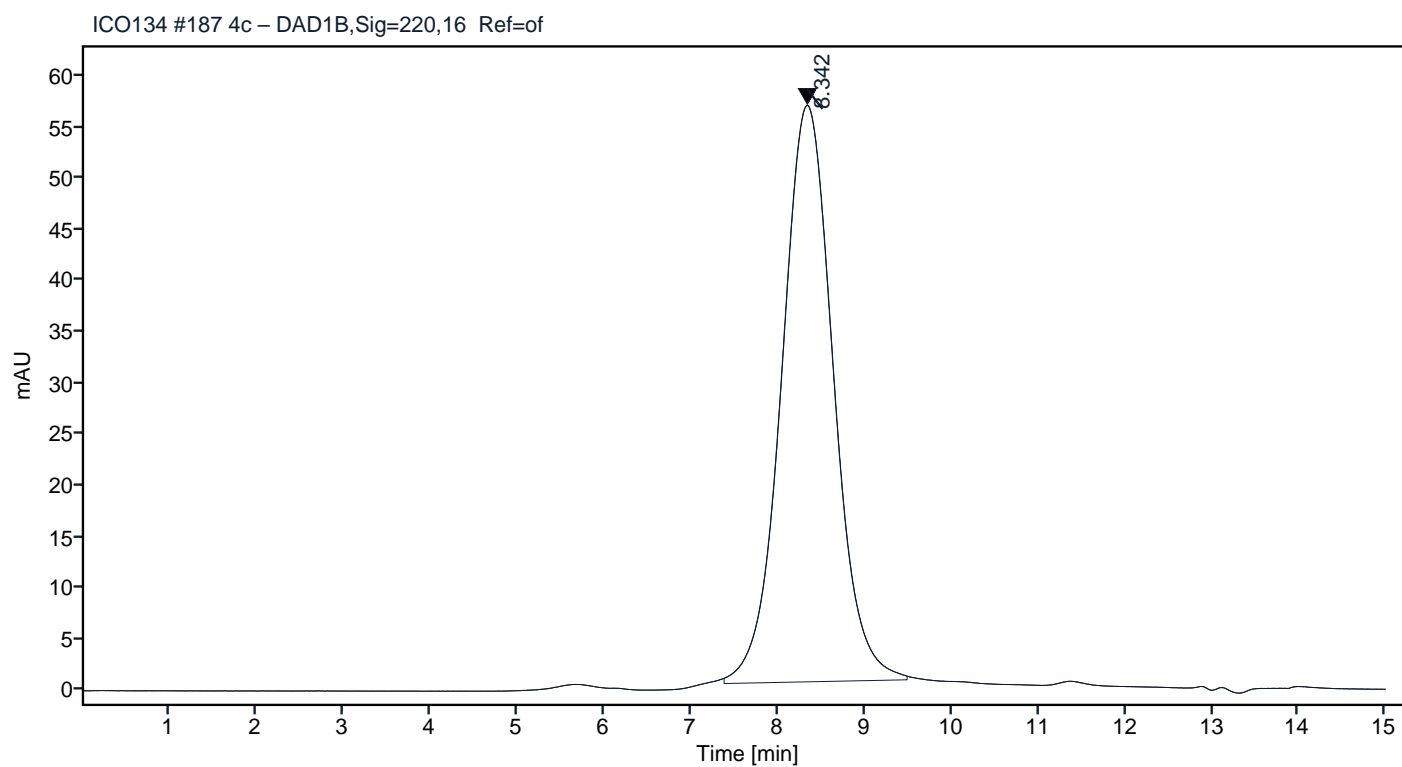


Figure 2. HPLC analytical SEC for final product.

Peak Table

Peak #	RT (min)	Area	Area %
1	8.343	2327.97	100.00

Chromatogram

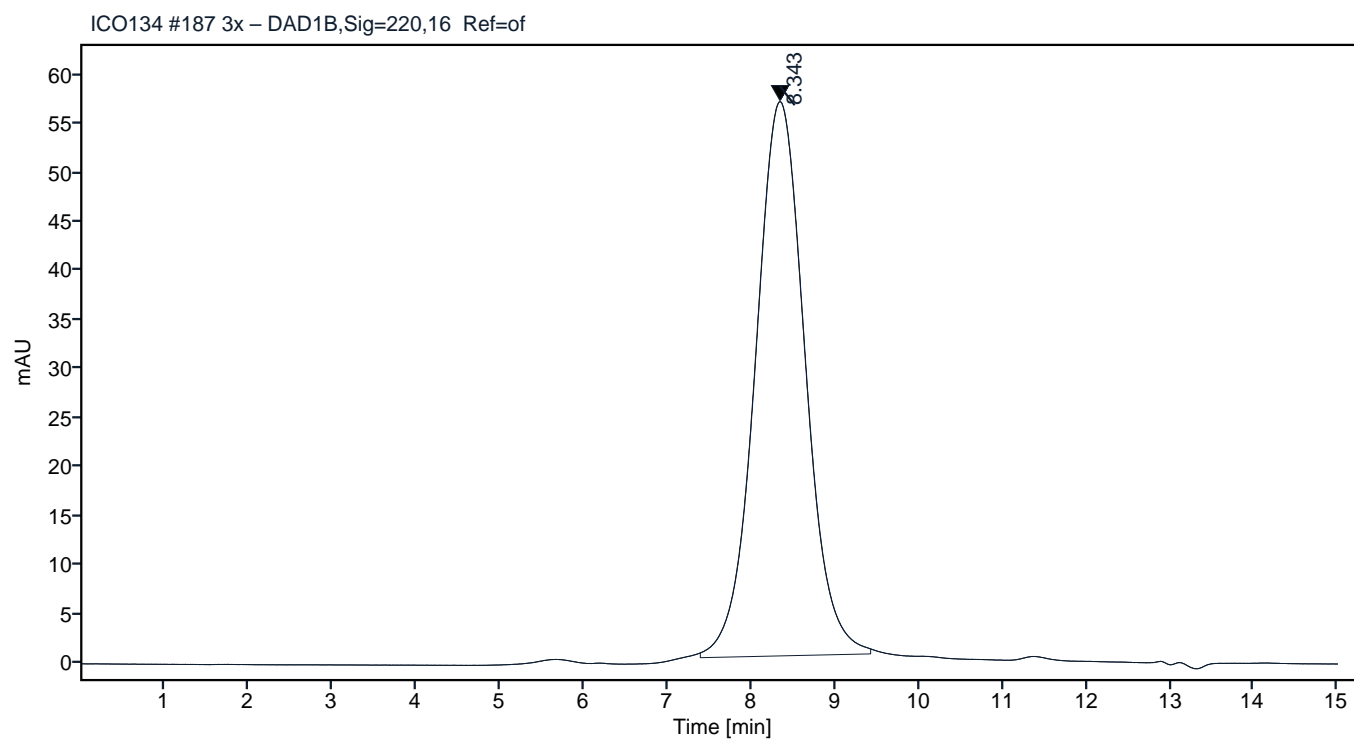


Figure 3. HPLC analytical SEC after 3 freeze-thaw cycles.

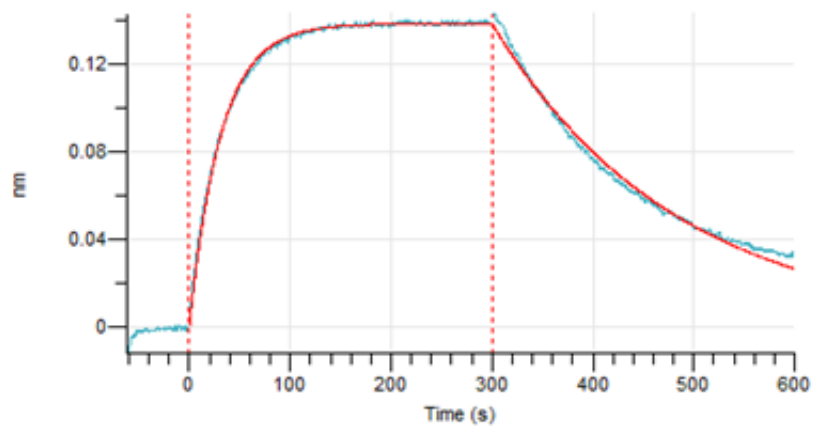


Figure 4. Octet RED96e analysis of SARS-CoV-2 S1 Omicron protein binding to the ACE2 receptor.