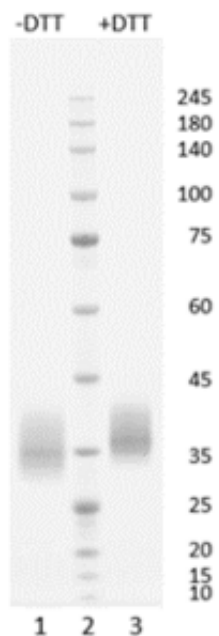




## **SARS-CoV-2 S1 RBD3 Indian B.1.617.2 (delta)**

Catalogue #	P-372-100
Description:	Protein contains amino acids 319-537, mutations L452R, T478K plus two extra amino acids (AS) in N-terminus and His-6 tag at C-terminus and GSG linker between protein and tag.
Uniprot ID:	P0DTC2
MW:	25.89 kDa
Host:	CHO-based cell line (expressed by QMCF Technology)
Purification:	Purified by Ni-affinity chromatography and gel-filtration from serum-free CHO growth media, sterile filtrated
Concentration:	1 mg/ml
Buffer:	PBS pH 7.4
Endotoxine:	NA
Bioproperties:	Measured by its binding ability to ACE2 protein by OCTET RED96 system.
QC:	SDS-PAGE, NanoDrop A280, Analytical SEC, Octet binding to ACE2
Shipping:	Shipped on dry ice.
Storage:	Store at -70°C upon receipt. Recommended to aliquot into smaller quantities. Avoid repeated freeze-thaw cycles

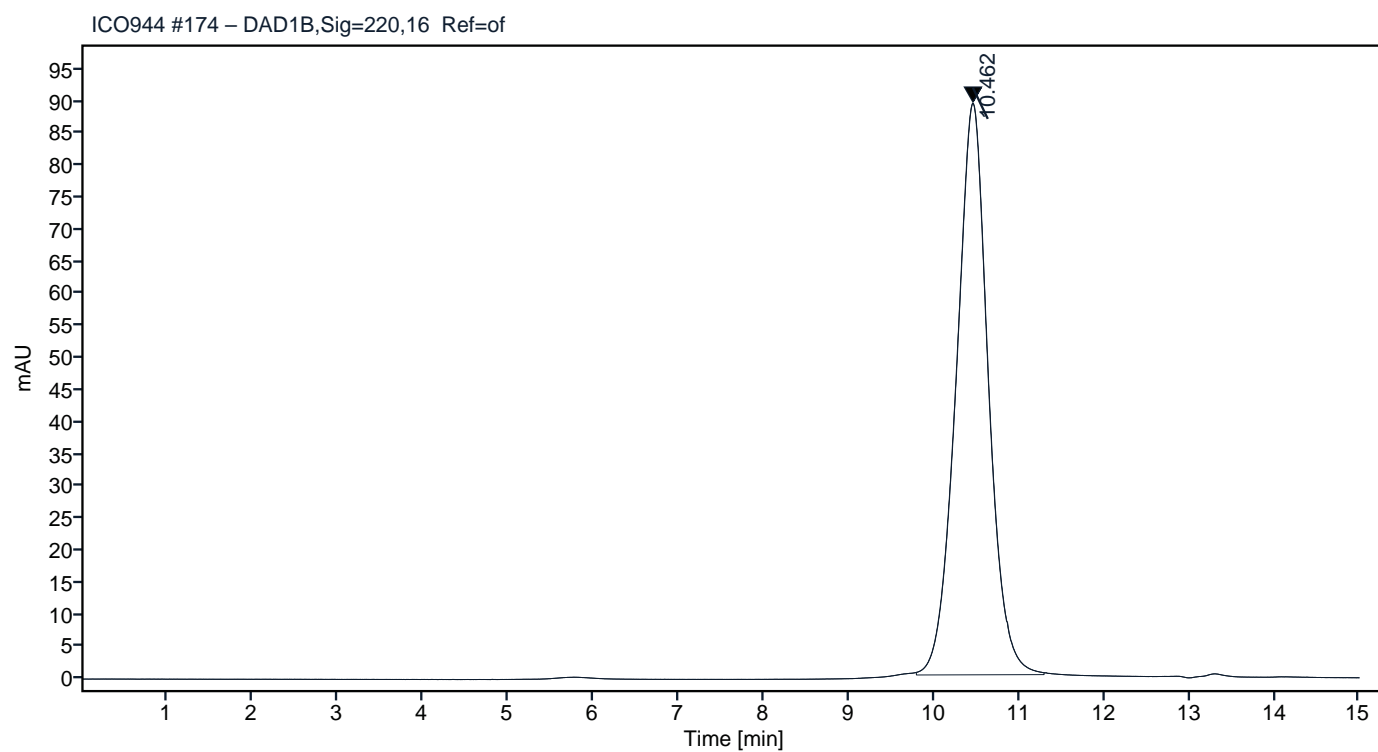


**Figure 1.** Simply Blue Safe stained SDS-PAGE analysis of SARS-CoV-2 S1 RBD3 Indian B.1.617.2 (delta). 4-12% gradient gel is used for analysis. Lane 1. 0.8  $\mu$ g SARS-CoV-2 S1 RBD3 Indian B.1.617.2 (delta) (-DTT). Lane 2. Protein marker (Smobio). Lane 3. 0.8  $\mu$ g SARS-CoV-2 S1 RBD3 Indian B.1.617.2 (delta) (+DTT).

## Peak Table

Peak #	RT (min)	Area	Area %
1	10.462	2333.08	100.00

## Chromatogram

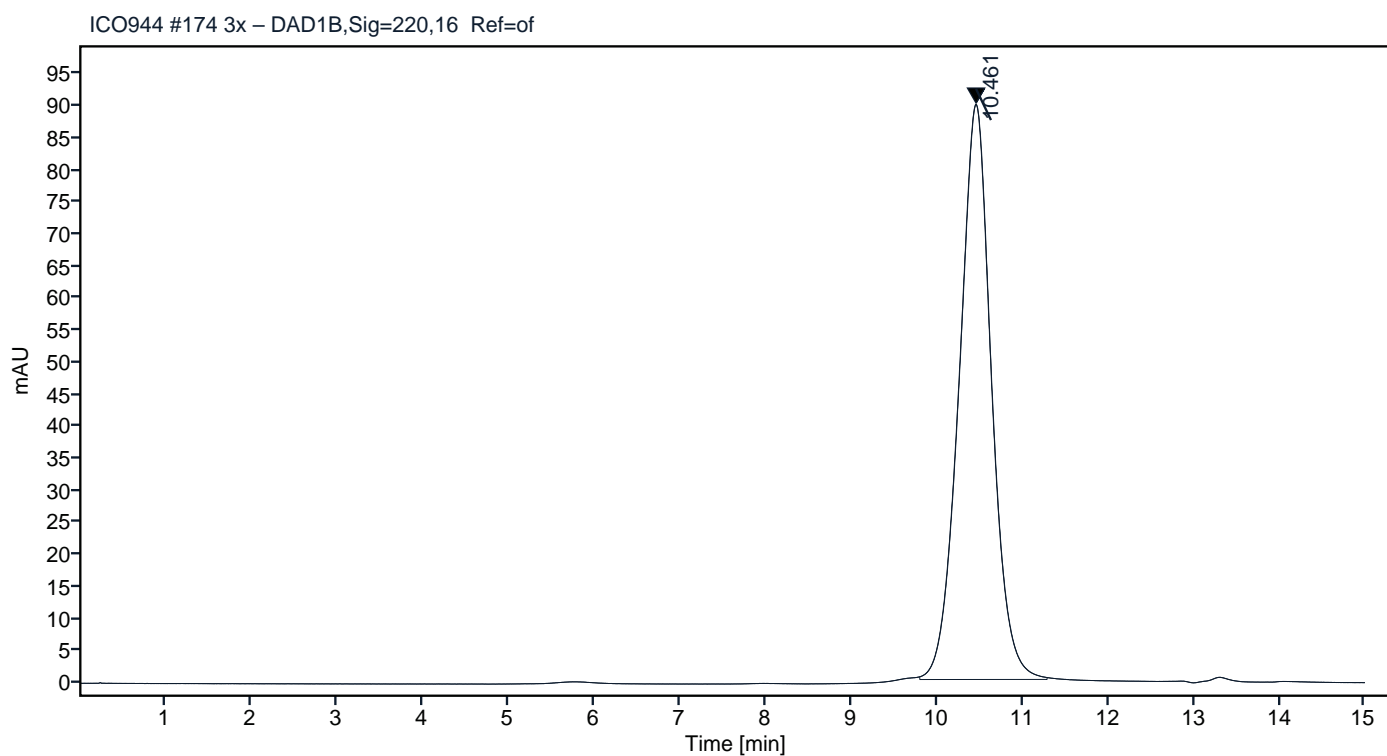


**Figure 2.** HPLC analytical SEC for final product.

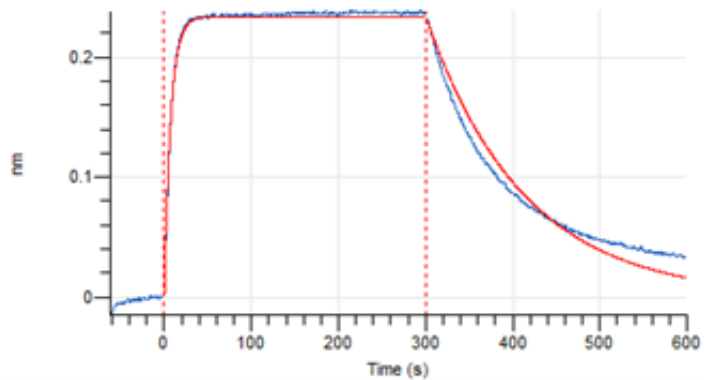
## Peak Table

Peak #	RT (min)	Area	Area %
1	10.461	2352.93	100.00

## Chromatogram



**Figure 3.** HPLC analytical SEC after 3 freeze-thaw cycles.



**Figure 4.** Octet RED96e analysis of SARS-CoV-2 Spike Delta protein binding to the ACE2 receptor.

