



Monoclonal antibody to C-reactive protein, clone 10A2, hIgG1

Catalogue #	R1-262-100
Immunogen:	Native human C-reactive protein
Immunogen Description:	Native human C-reactive protein
Source:	Human
Clonality:	Human monoclonal
Clone:	10A2
Class:	hIgG1
Application:	ELISA, CLIA
Kd:	9.432 x 10 ⁻¹¹ M
Purification:	Produced recombinantly using CHO-based cell line (expressed by QMCF technology). Purified using protein A affinity chromatography followed by desalting
Purity:	>90%
Concentration:	1 mg/ml
Buffer:	PBS, pH 7.4
QC:	LabChip protein analysis, analytical SEC, Octet BLI analysis
Shipping:	Shipped with blue ice.
Storage:	Store at +4 °C.

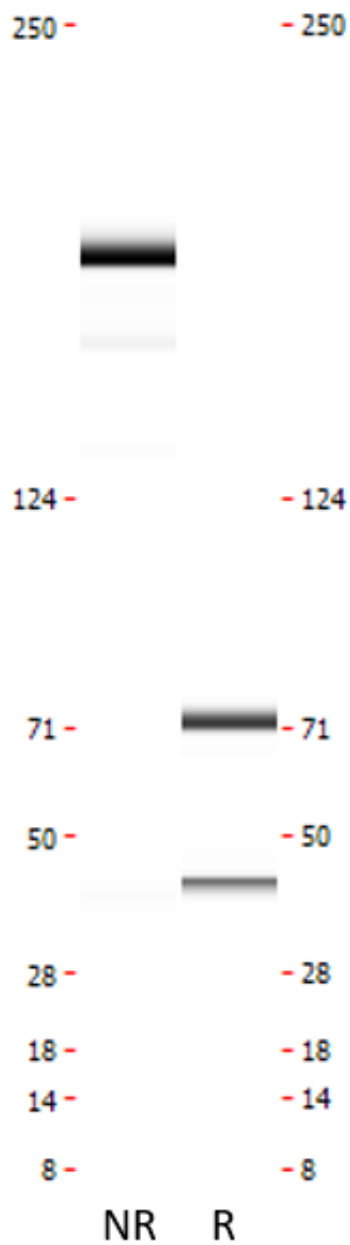
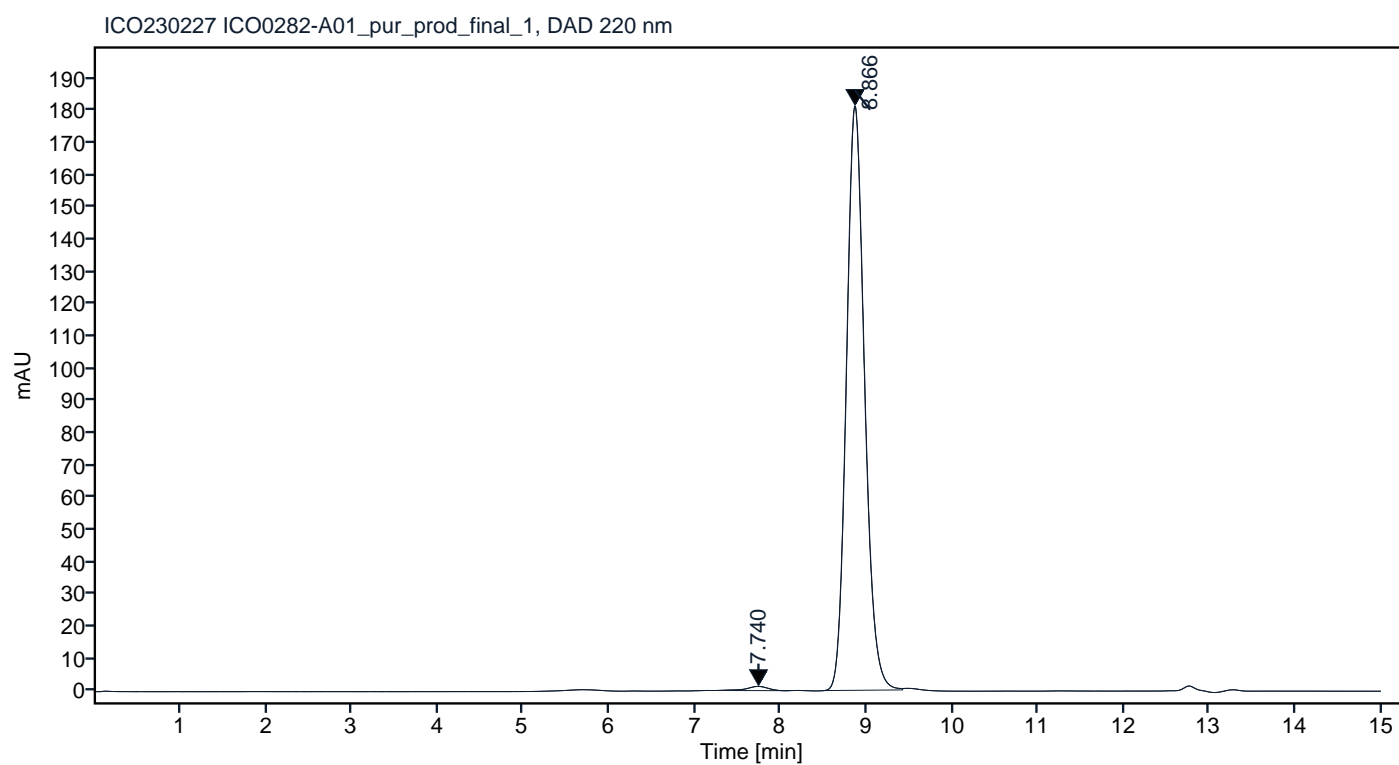


Figure 1. CE-SDS virtual gel output (LabChip GX) for monoclonal antibody to C-reactive protein, clone 10A2 under non-reduced (NR, left) and reduced (R, right) conditions.

Peak #	RT (min)	Estimated Mw (Da)*	Area	Area %
1	7.740	316343	22.18	0.82
2	8.866	136363	2669.31	99.18

Chromatogram

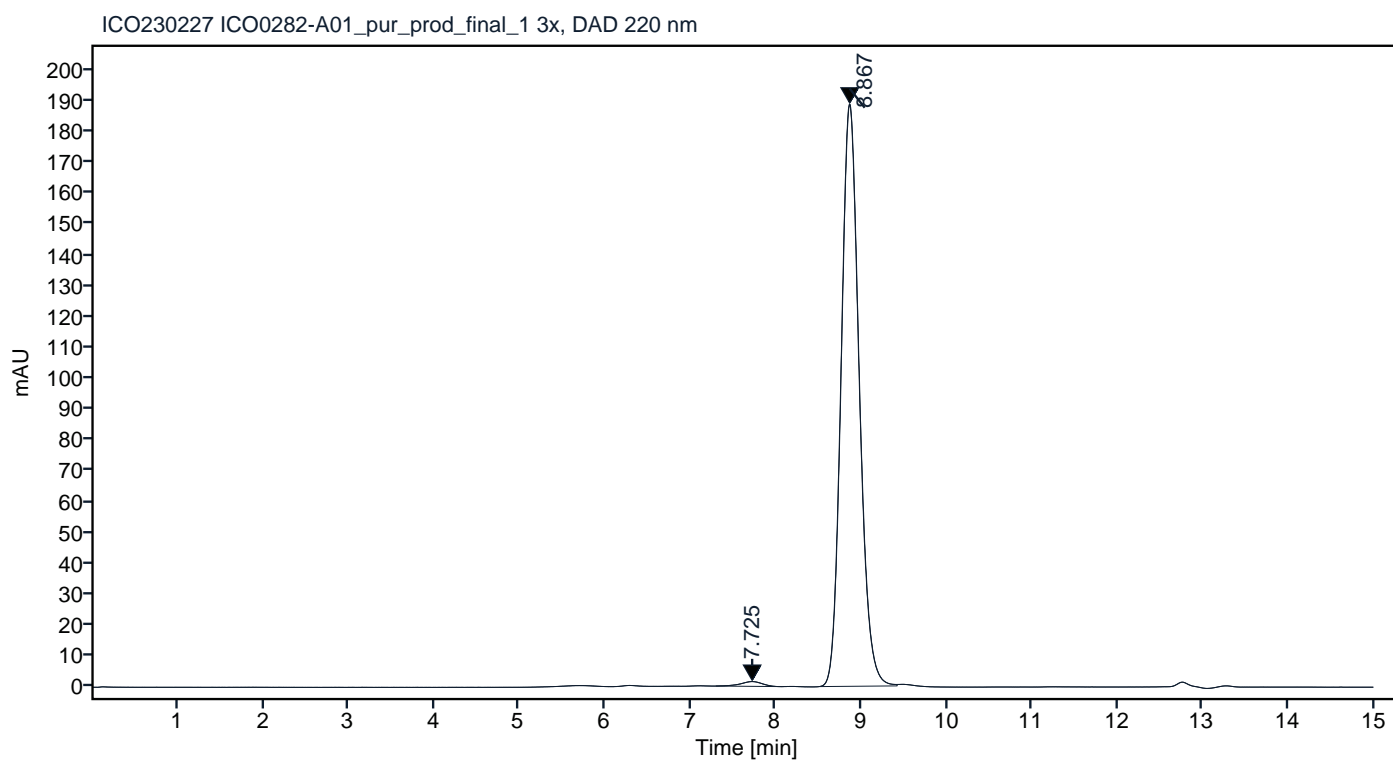


*Calculated using calibration curve obtained from AdvanceBio SEC 300A Protein Standard (p/n 5190-9417) retention times. Peaks with integrated areas below 0.5% of the calculated values were excluded from analysis.

Figure 2. Analytical SEC of final product.

Peak #	RT (min)	Estimated Mw (Da)*	Area	Area %
1	7.725	317004	27.02	0.96
2	8.867	136337	2778.29	99.04

Chromatogram



*Calculated using calibration curve obtained from AdvanceBio SEC 300A Protein Standard (p/n 5190-9417) retention times. Peaks with integrated areas below 0.5% of the calculated values were excluded from analysis.

Figure 3. HPLC analytical SEC after 3 freeze-thaw cycles.

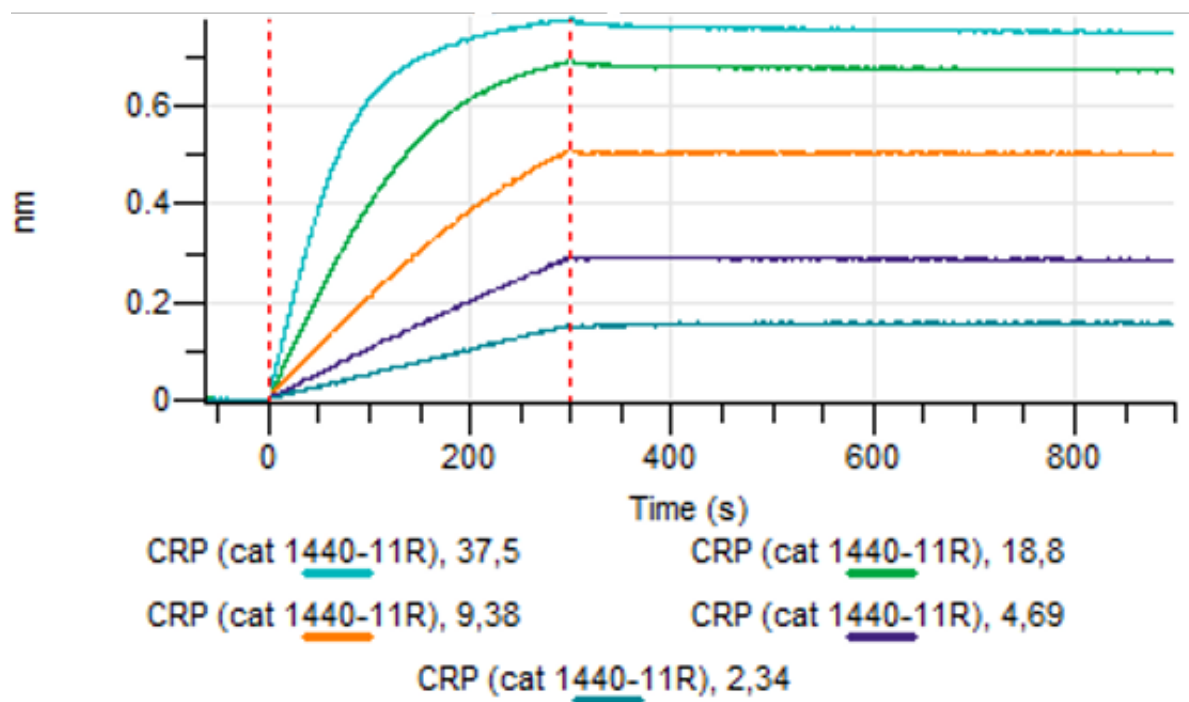


Figure 4. Octet BLI analysis, antibody was loaded on sensor for capture of C-reactive protein in different concentrations.