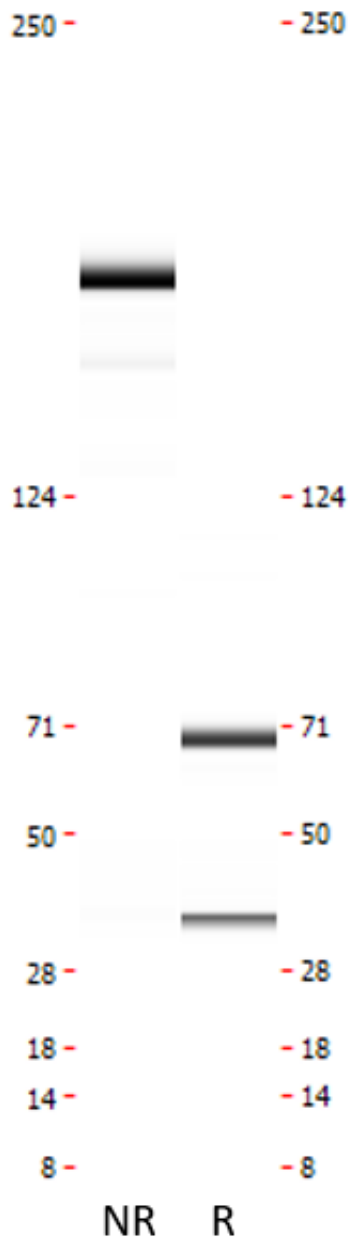




## Monoclonal antibody to C-reactive protein, clone 9G8, hIgG1

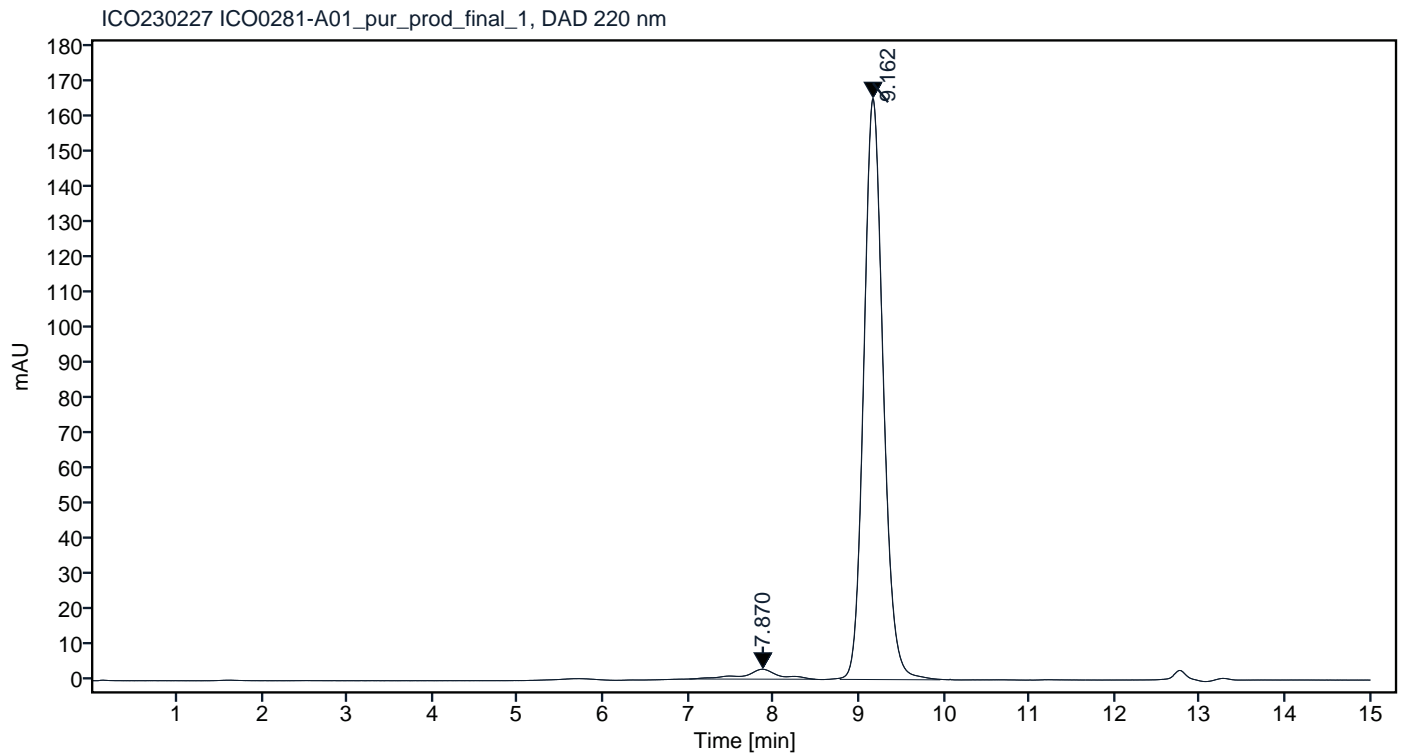
|                        |   |
|------------------------|---|
| Catalogue #            | R1-261-100  |
| Immunogen:             | Native human C-reactive protein   |
| Immunogen Description: | Native human C-reactive protein   |
| Source:                | Human   |
| Clonality:             | Human monoclonal  |
| Clone:                 | 9G8   |
| Class:                 | hIgG1   |
| Application:           | ELISA, CLIA   |
| Kd:                    | 1.848 x 10 <sup>-10</sup> M   |
| Purification:          | Produced recombinantly using CHO-based cell line (expressed by QMCF technology). Purified using protein A affinity chromatography followed by desalting |
| Purity:                | >90%  |
| Concentration:         | 1 mg/ml   |
| Buffer:                | PBS, pH 7.4   |
| QC:                    | LabChip protein analysis, analytical SEC, Octet BLI analysis  |
| Shipping:              | Shipped with blue ice.  |
| Storage:               | Store at +4 °C.   |



**Figure 1.** CE-SDS virtual gel output (LabChip GX) for monoclonal antibody to C-reactive protein, clone 9G8 under non-reduced (NR, left) and reduced (R, right) conditions.

| Peak # | RT (min) | Estimated Mw (Da)* | Area    | Area % |
|--------|----------|--------------------|---------|--------|
| 1      | 7.870    | 296555             | 81.92   | 3.04   |
| 2      | 9.162    | 110259             | 2612.14 | 96.96  |

## Chromatogram

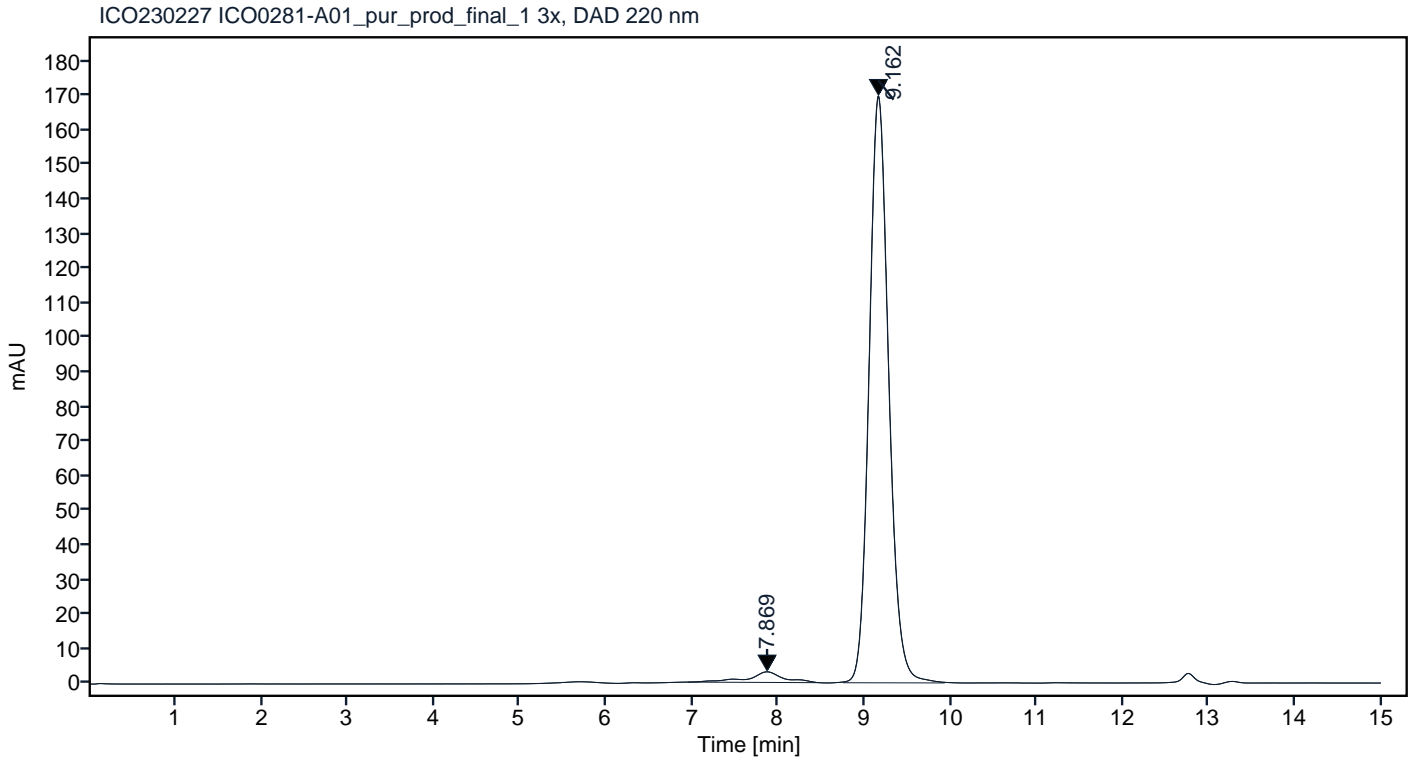


\*Calculated using calibration curve obtained from AdvanceBio SEC 300A Protein Standard (p/n 5190-9417) retention times. Peaks with integrated areas below 0.5% of the calculated values were excluded from analysis.

**Figure 2.** Analytical SEC of final product.

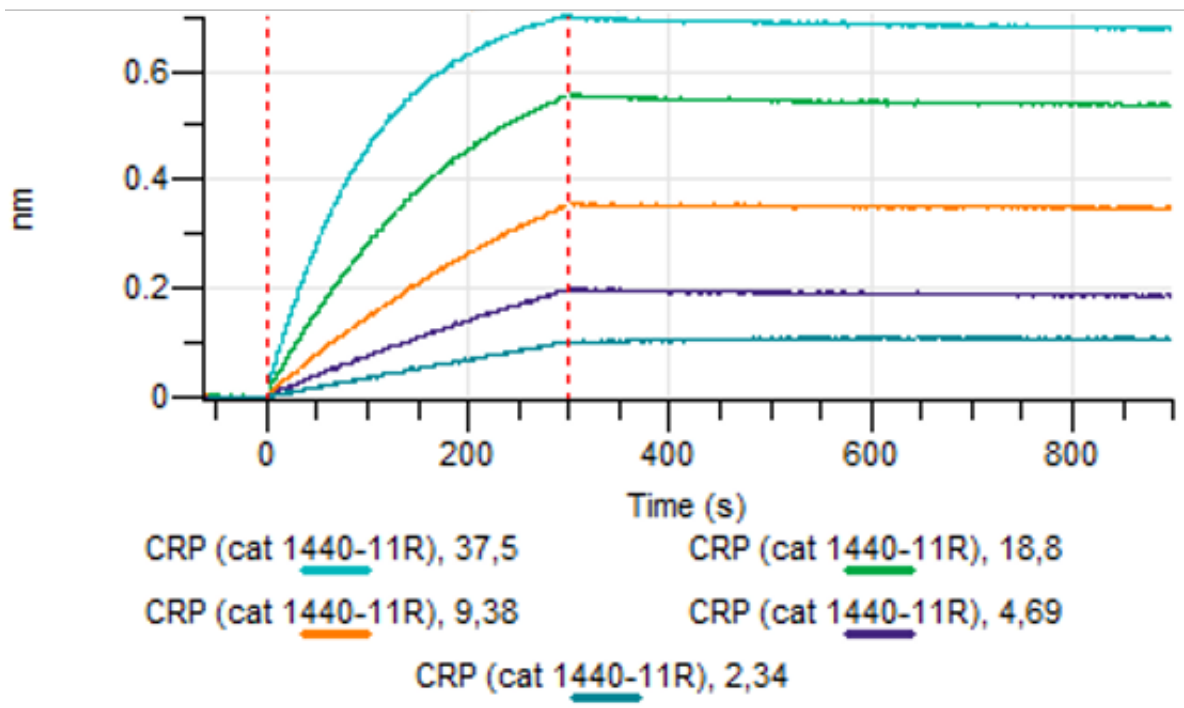
| Peak # | RT (min) | Estimated Mw (Da)* | Area    | Area % |
|--------|----------|--------------------|---------|--------|
| 1      | 7.869    | 296861             | 88.77   | 3.20   |
| 2      | 9.162    | 110260             | 2683.92 | 96.80  |

### Chromatogram



\*Calculated using calibration curve obtained from AdvanceBio SEC 300A Protein Standard (p/n 5190-9417) retention times. Peaks with integrated areas below 0.5% of the calculated values were excluded from analysis.

**Figure 3.** HPLC analytical SEC after 3 freeze-thaw cycles.



**Figure 4.** Octet BLI analysis, antibody was loaded on sensor for capture of C-reactive protein in different concentrations.