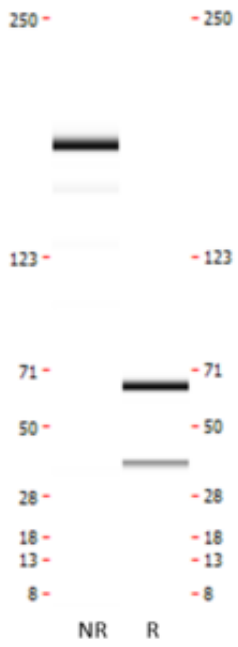




## Monoclonal antibody to CHI3L1, clone 14B2, hIgG1

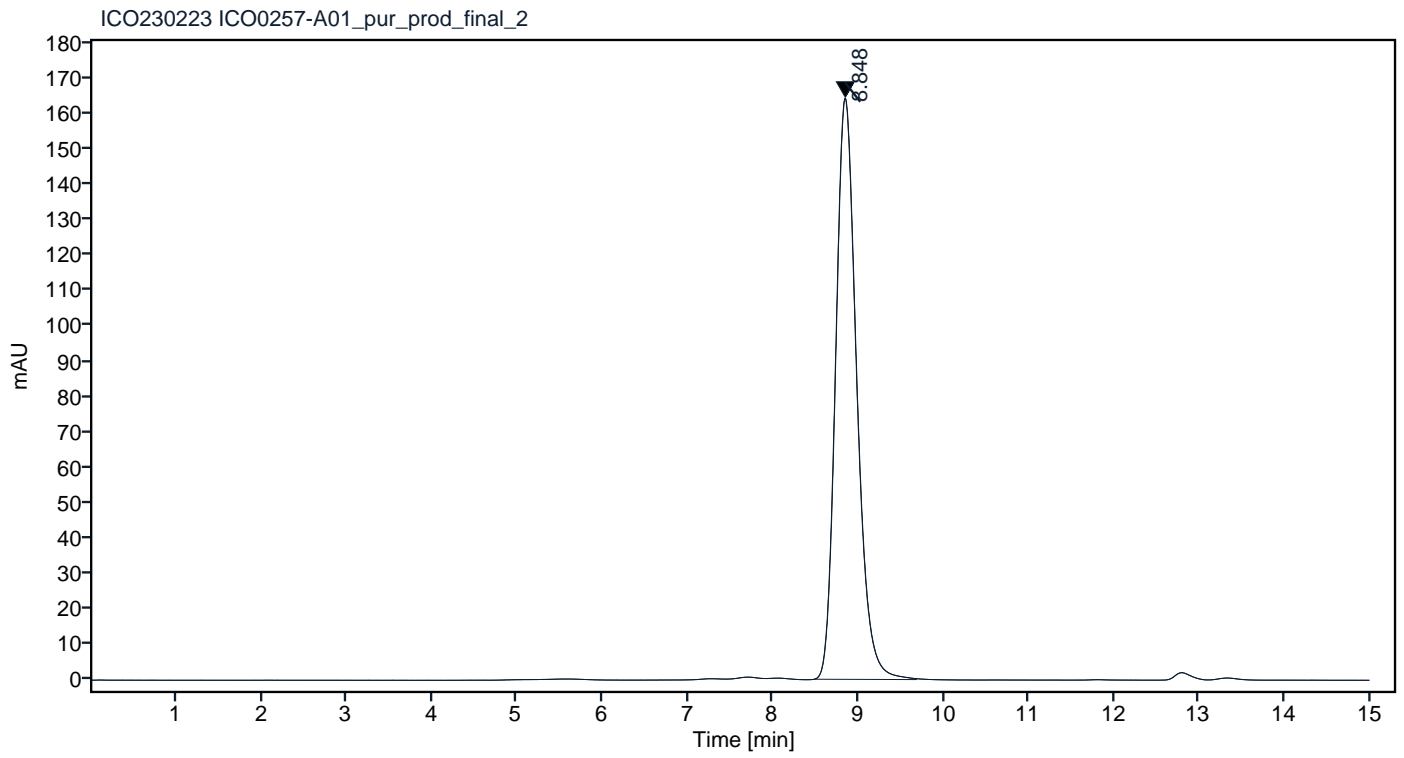
Catalogue #	R1-237-100
Immunogen:	Recombinant CHI3L1 protein
Immunogen Description:	Recombinant CHI3L1 protein produced by CHO-based cell line (expressed by QMCF Technology).
Source:	Human
Clonality:	Human monoclonal
Clone:	14B2
Class:	hIgG1
Application:	ELISA, CLIA
Kd:	2.042 x 10 <sup>-10</sup> M
Purification:	Produced recombinantly using CHO-based cell line (expressed by QMCF technology). Purified using protein A affinity chromatography followed by desalting.
Purity:	>90%
Concentration:	1 mg/ml
Buffer:	PBS, pH 7.4
QC:	LabChip protein analysis, analytical SEC, Octet BLI analysis
Shipping:	Shipped with blue ice.
Storage:	Store at +4 °C.



**Figure 1.** CE-SDS virtual gel output (LabChip GX) for monoclonal antibody to CHI3L1, clone 14B2 under non-reduced (NR, left) and reduced (R, right) conditions.

Peak #	RT (min)	Estimated Mw (Da)*	Area	Area %
1	8.848	135958	2819.15	100.00

## Chromatogram

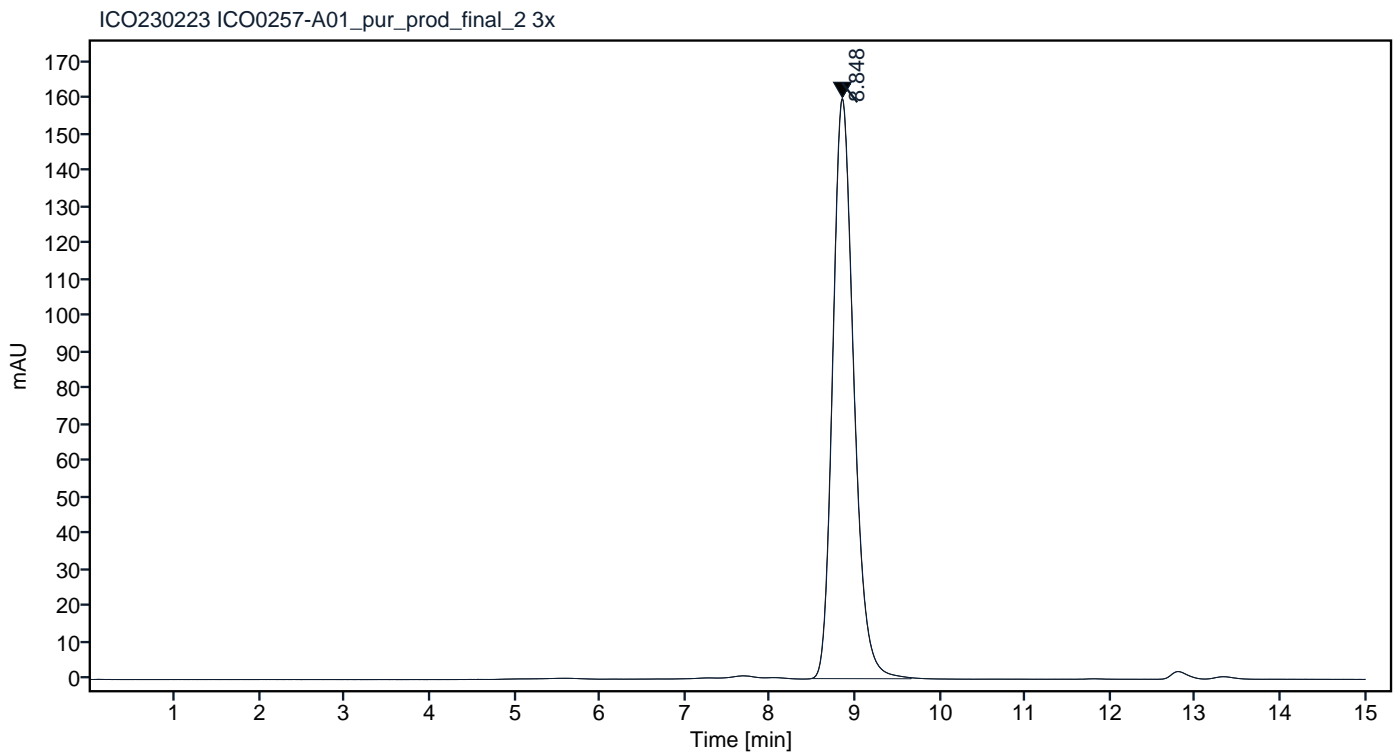


\*Calculated using calibration curve obtained from AdvanceBio SEC 300A Protein Standard (p/n 5190-9417) retention times

**Figure 2.** Analytical SEC of final product.

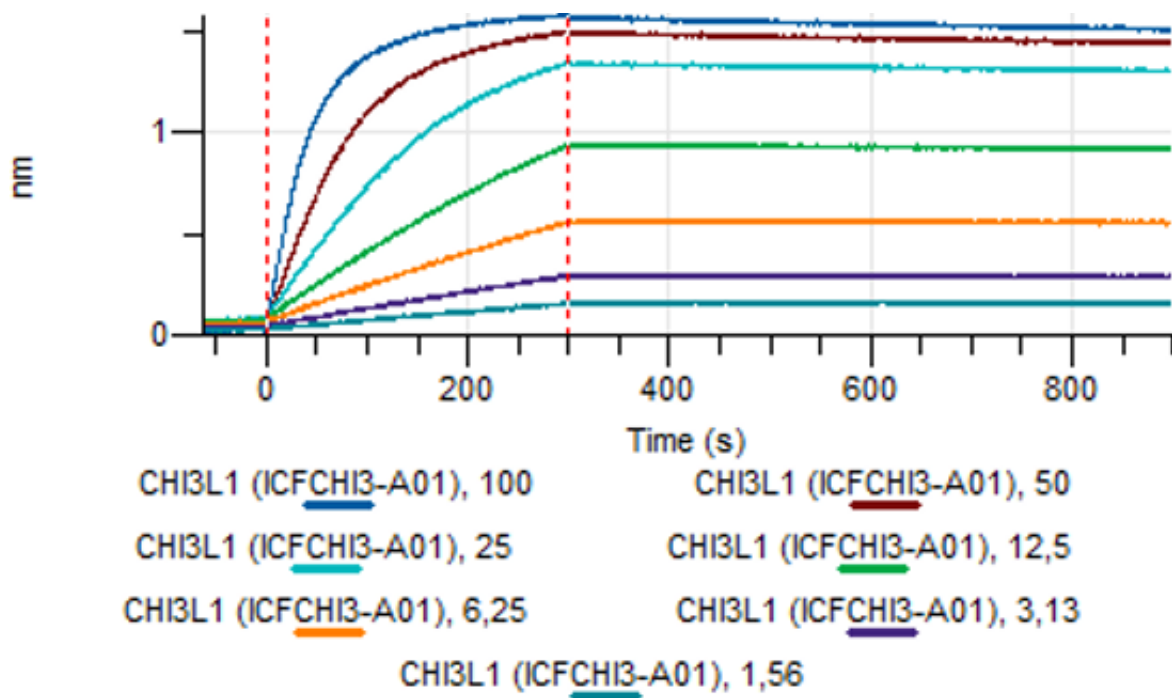
Peak #	RT (min)	Estimated Mw (Da)*	Area	Area %
1	8.848	136014	2747.03	100.00

### Chromatogram



\*Calculated using calibration curve obtained from AdvanceBio SEC 300A Protein Standard (p/n 5190-9417) retention times

**Figure 3.** HPLC analytical SEC after 3 freeze-thaw cycles.



**Figure 4.** Octet BLI analysis, antibody was loaded on sensor for capture of CHI3L1 protein in different concentrations.