



Monoclonal antibody to PAI-1, clone 11E1, hlgG1

Catalogue #	R1-226-100
Immunogen:	Recombinant PAI-1 protein
Immunogen Description:	Recombinant PAI-1 protein produced by CHO-based cell line (expressed by QMCF Technology).
Clonality:	Human monoclonal
Clone:	11E1
Class:	hlgG1
Application:	ELISA, CLIA
Kd:	4.944 x 10 ⁻¹⁰ M
Purification:	Produced recombinantly using CHO-based cell line (expressed by QMCF technology). Purified using protein A affinity chromatography followed by desalting.
Purity:	>95%
Concentration:	1 mg/ml
Buffer:	PBS, pH 7.4
QC:	LabChip protein analysis, analytical SEC, Octet binding analysis
Shipping:	Shipped with blue ice.
Storage:	Store at +4 °C. Avoid multiple freeze-thaw cycles.

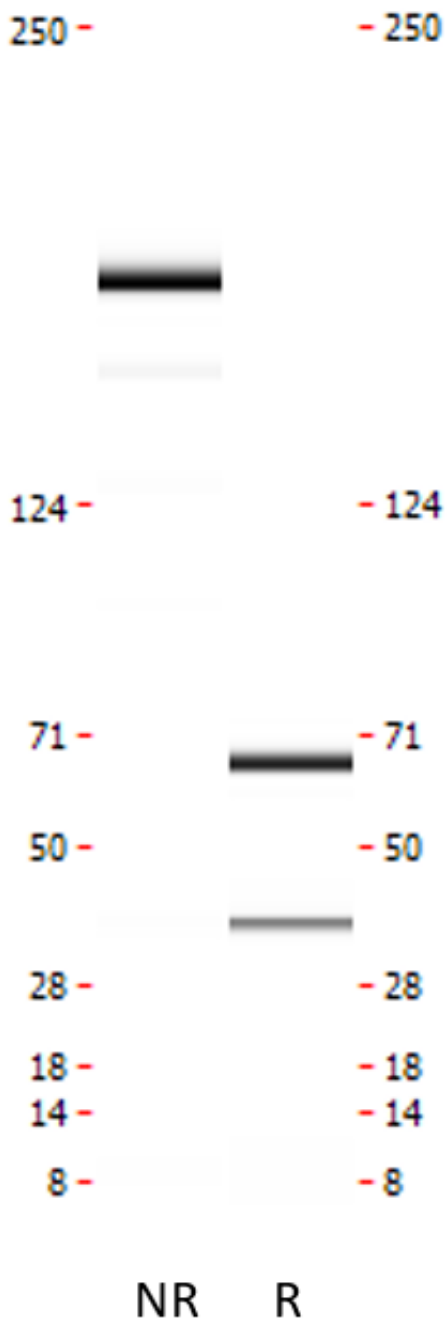
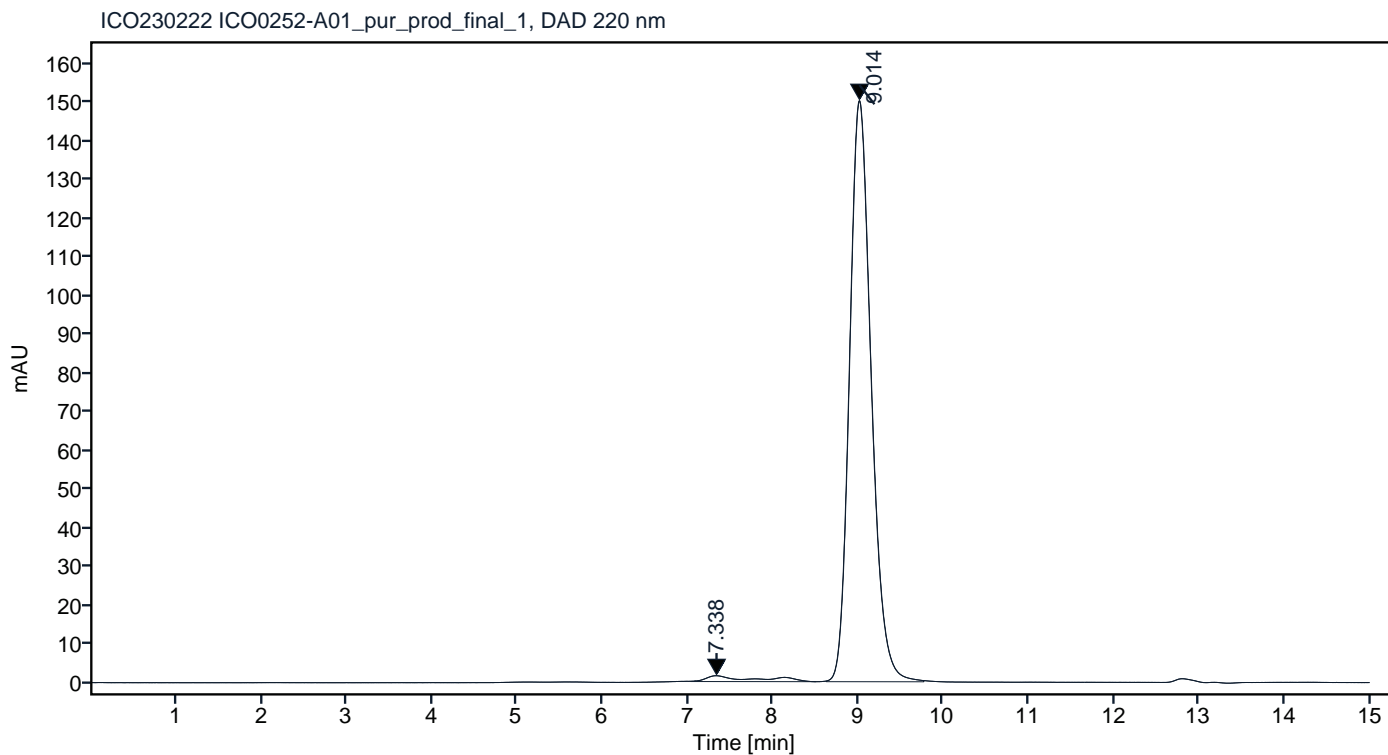


Figure 1. CE-SDS virtual gel output (LabChip GX) for monoclonal antibody to PAI-1, clone 11E1 under non-reduced (NR, left) and reduced (R, right) conditions.

Peak #	RT (min)	Estimated Mw (Da)*	Area	Area %
1	7.338	323231	60.92	2.24
2	9.014	121117	2653.98	97.76

Chromatogram

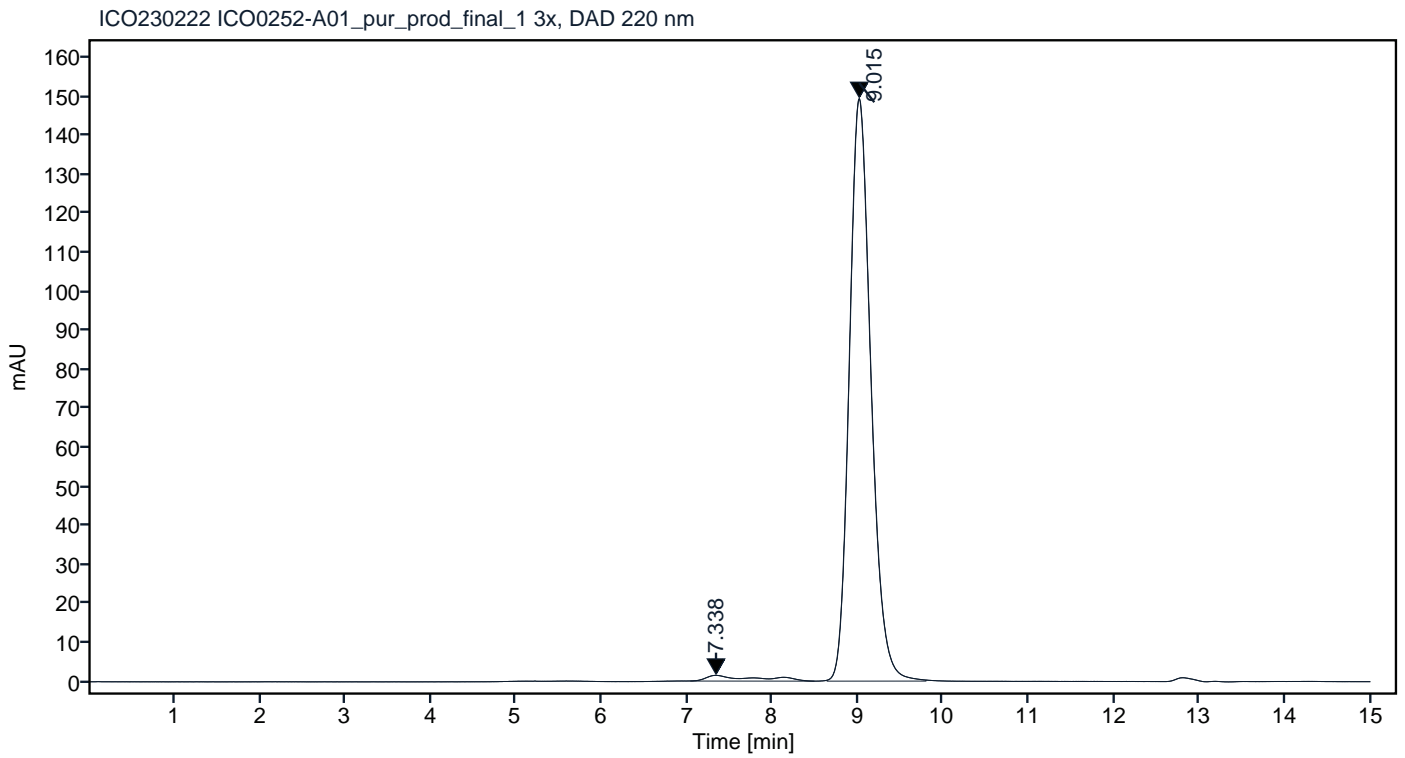


*Calculated using calibration curve obtained from AdvanceBio SEC 300A Protein Standard (p/n 5190-9417) retention times. Peaks with integrated areas below 0.5% of the calculated values were excluded from analysis.

Figure 2. Analytical SEC of final product.

Peak #	RT (min)	Estimated Mw (Da)*	Area	Area %
1	7.338	324530	59.50	2.21
2	9.015	121089	2627.58	97.79

Chromatogram



*Calculated using calibration curve obtained from AdvanceBio SEC 300A Protein Standard (p/n 5190-9417) retention times. Peaks with integrated areas below 0.5% of the calculated values were excluded from analysis.

Figure 3. HPLC analytical SEC after 3 freeze-thaw cycles.

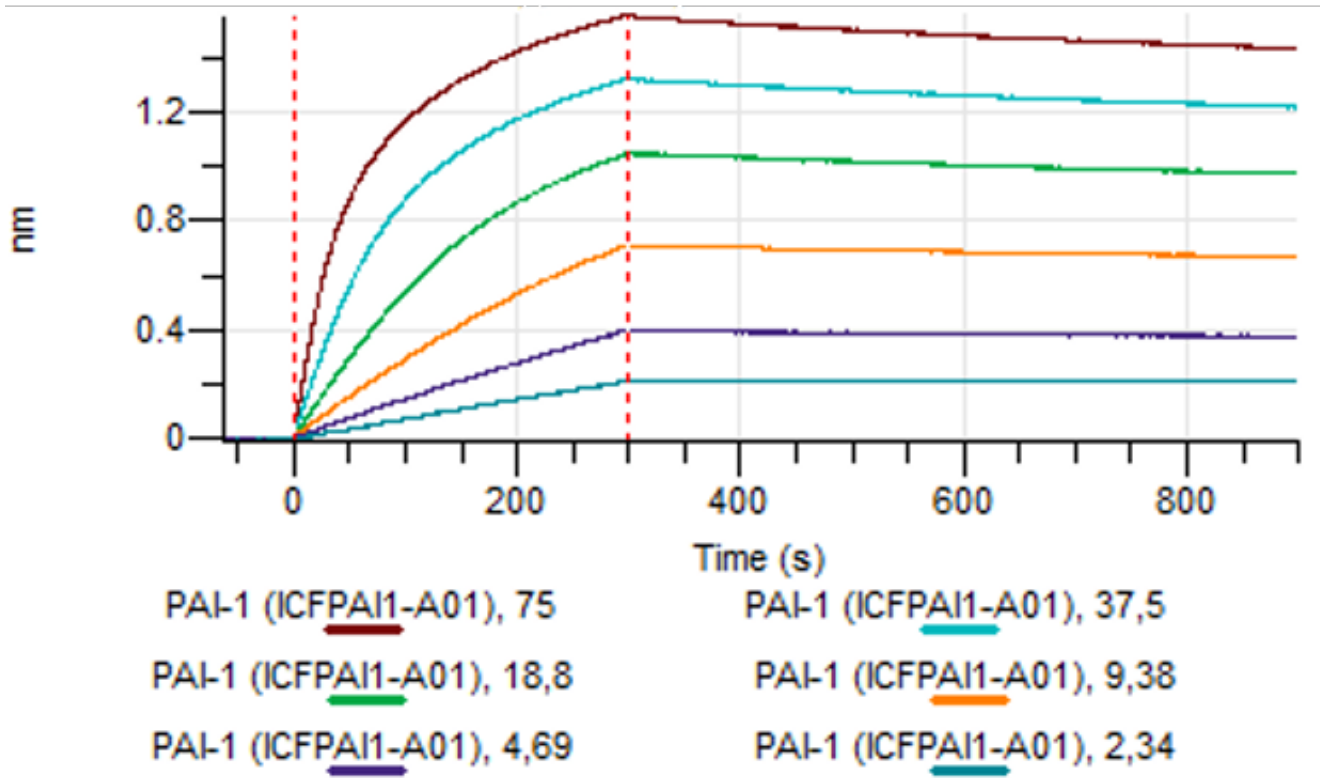


Figure 4. Octet binding analysis, antibody was loaded on sensor for capture of PAI-1 protein in different concentrations.