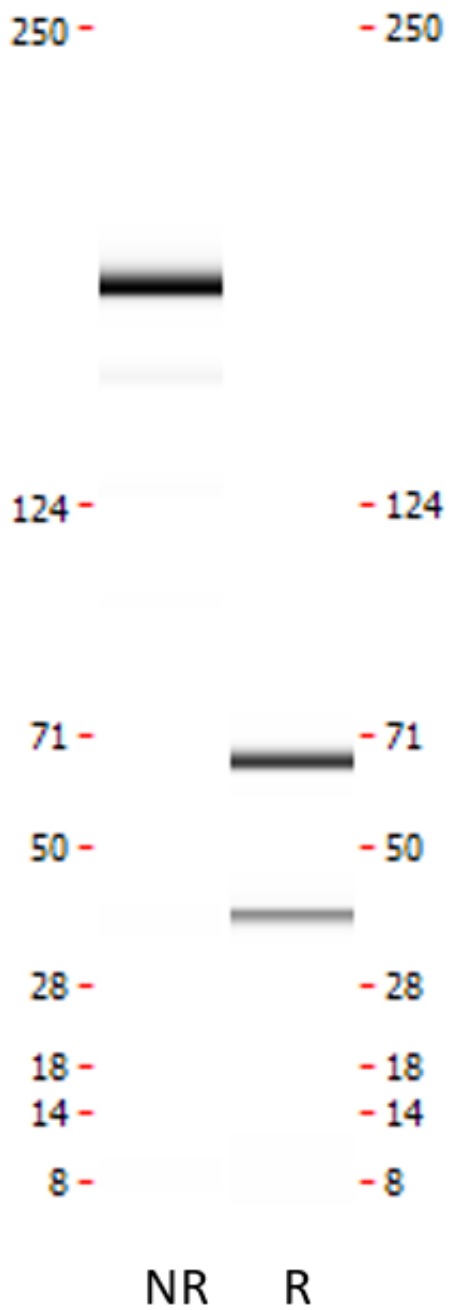




## Monoclonal antibody to PAI-1, clone 4C8, hlgG1

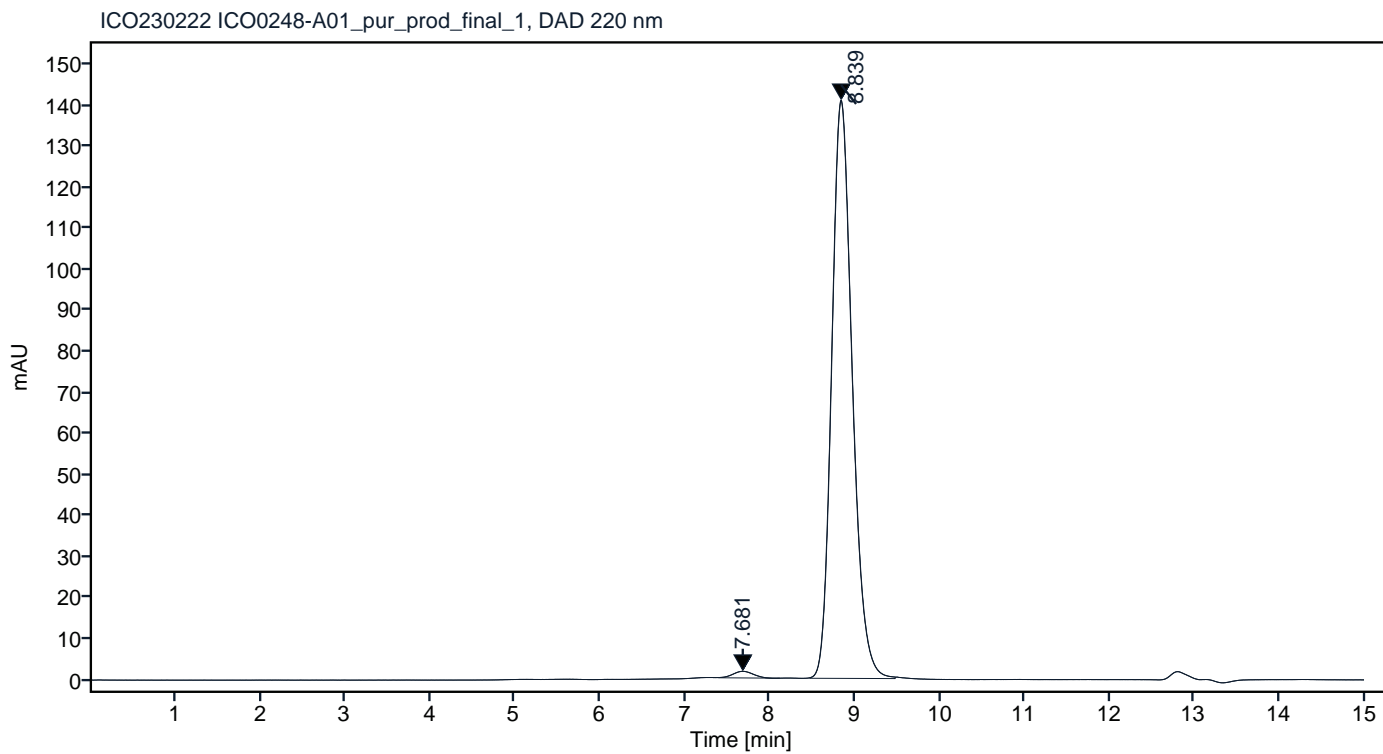
Catalogue #	R1-224-100
Immunogen:	Recombinant PAI-1 protein
Immunogen Description:	Recombinant PAI-1 protein produced by CHO-based cell line (expressed by QMCF Technology).
Source:	Human
Clonality:	Human monoclonal
Clone:	4C8
Class:	hlgG1
Application:	ELISA, CLIA
Kd:	8.381 x 10 <sup>-11</sup> M
Purification:	Produced recombinantly using CHO-based cell line (expressed by QMCF technology). Purified using protein A affinity chromatography followed by desalting
Purity:	>95%
Concentration:	1 mg/ml
Buffer:	PBS, pH 7.4
QC:	LabChip protein analysis, analytical SEC, Octet binding analysis
Shipping:	Shipped with blue ice.
Storage:	Store at +4 °C. Avoid multiple freeze-thaw cycles.



**Figure 1.** CE-SDS virtual gel output (LabChip GX) for monoclonal antibody to PAI-1, clone 4C8 under non-reduced (NR, left) and reduced (R, right) conditions.

Peak #	RT (min)	Estimated Mw (Da)*	Area	Area %
1	7.681	316629	26.63	1.11
2	8.839	137309	2373.35	98.89

## Chromatogram

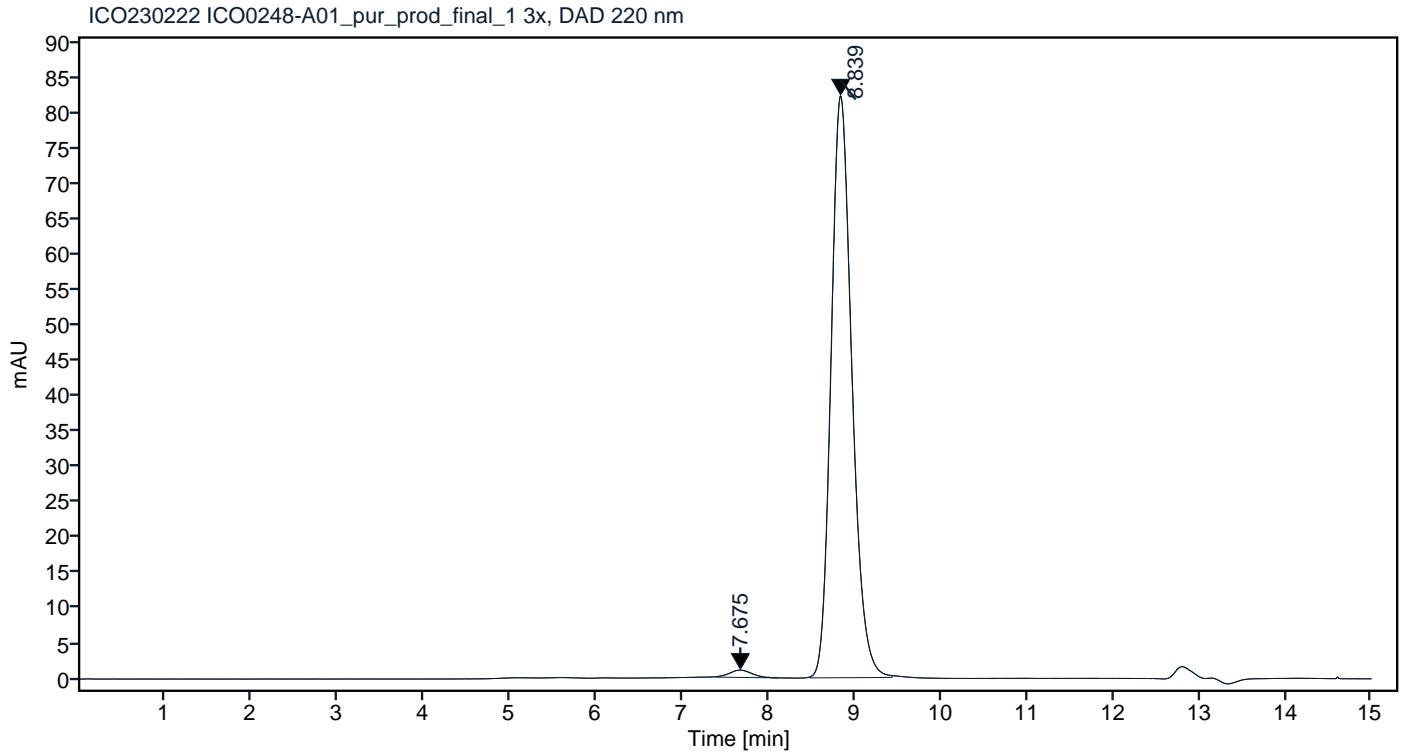


\*Calculated using calibration curve obtained from AdvanceBio SEC 300A Protein Standard (p/n 5190-9417) retention times. Peaks with integrated areas below 0.5% of the calculated values were excluded from analysis.

**Figure 2.** Analytical SEC of final product.

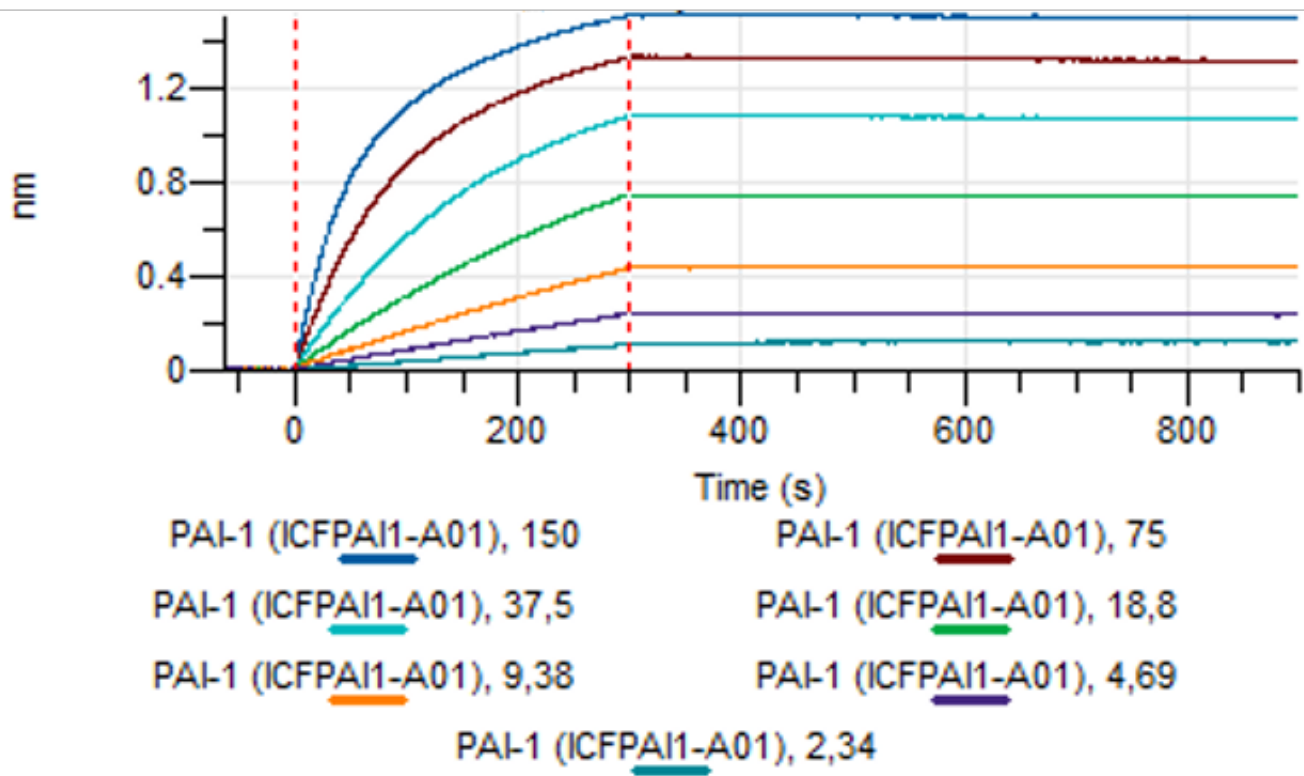
Peak #	RT (min)	Estimated Mw (Da)*	Area	Area %
1	7.675	317755	18.75	1.34
2	8.839	137329	1385.05	98.66

### Chromatogram



\*Calculated using calibration curve obtained from AdvanceBio SEC 300A Protein Standard (p/n 5190-9417) retention times. Peaks with integrated areas below 0.5% of the calculated values were excluded from analysis.

**Figure 3.** HPLC analytical SEC after 3 freeze-thaw cycles.



**Figure 4.** Octet binding analysis, antibody was loaded on sensor for capture of PAI-1 protein in different concentrations.