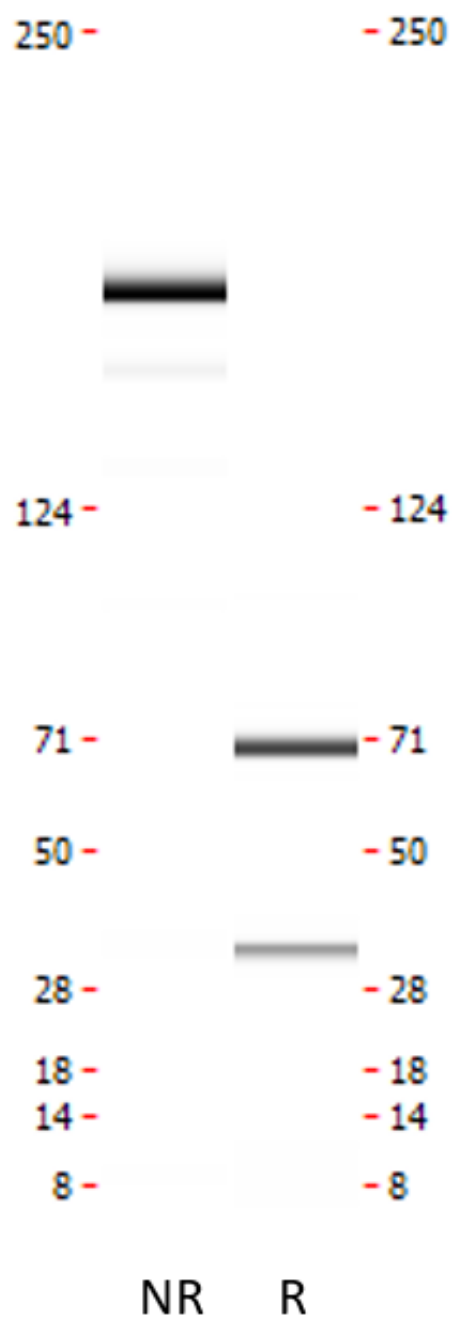




## Monoclonal antibody to PAI-1, clone 11D6, hIgG1

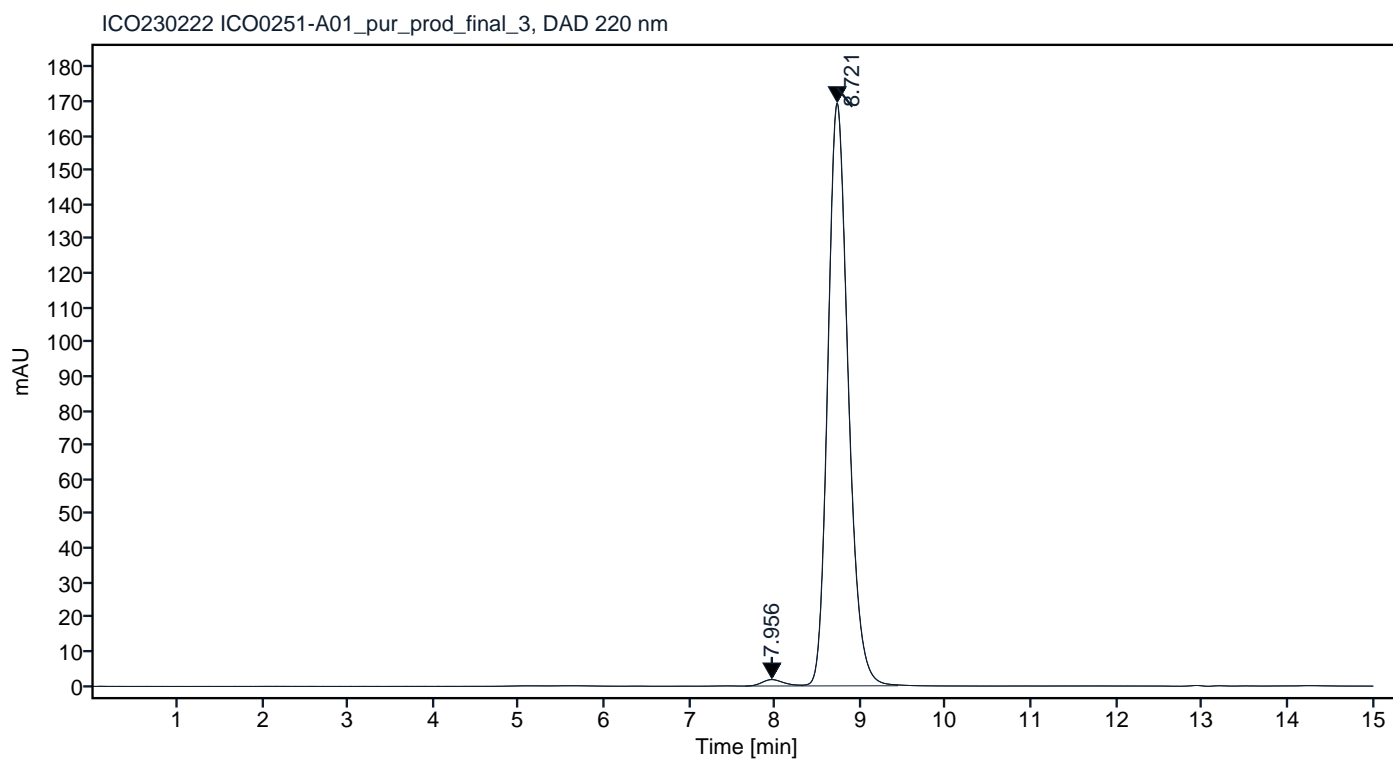
Catalogue #	R1-222-100
Immunogen:	Recombinant PAI-1 protein
Immunogen Description:	Recombinant PAI-1 protein produced by CHO-based cell line (expressed by QMCF Technology).
Source:	Human
Clonality:	Human monoclonal
Clone:	11D6
Class:	hIgG1
Application:	ELISA, CLIA
Kd:	$2.834 \times 10^{-10}$ M
Purification:	Produced recombinantly using CHO-based cell line (expressed by QMCF technology). Purified using protein A affinity chromatography followed by desalting and gel filtration.
Purity:	>95%
Concentration:	1 mg/ml
Buffer:	PBS, pH 7.4
QC:	LabChip protein analysis, analytical SEC, Octet binding analysis
Shipping:	Shipped with blue ice.
Storage:	Store at +4 °C. Avoid multiple freeze-thaw cycles.



**Figure 1.** CE-SDS virtual gel output (LabChip GX) for monoclonal antibody to PAI-1, clone 11D6 under non-reduced (NR, left) and reduced (R, right) conditions.

Peak #	RT (min)	Estimated Mw (Da)*	Area	Area %
1	7.956	256685	32.95	1.16
2	8.721	149182	2816.69	98.84

## Chromatogram

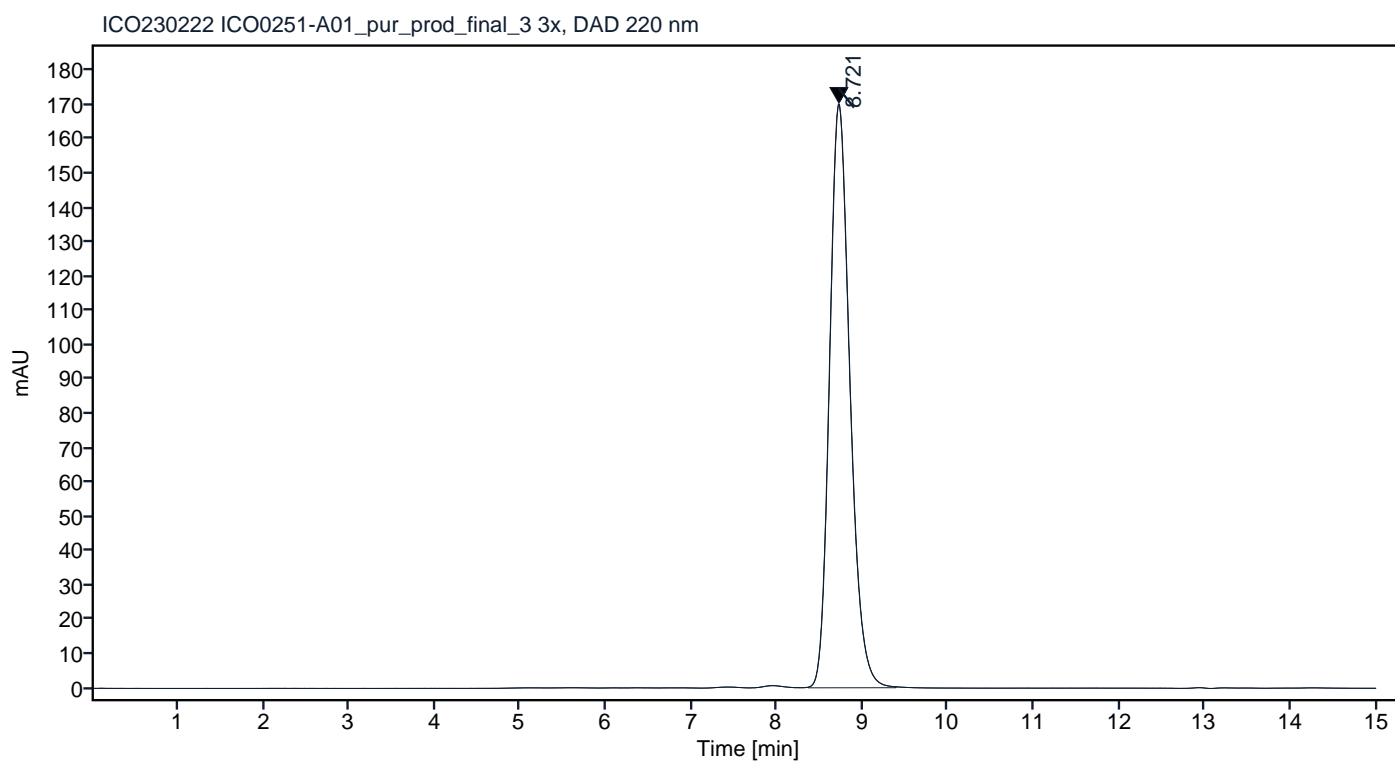


\*Calculated using calibration curve obtained from AdvanceBio SEC 300A Protein Standard (p/n 5190-9417) retention times. Peaks with integrated areas below 0.5% of the calculated values were excluded from analysis.

**Figure 2.** Analytical SEC of final product.

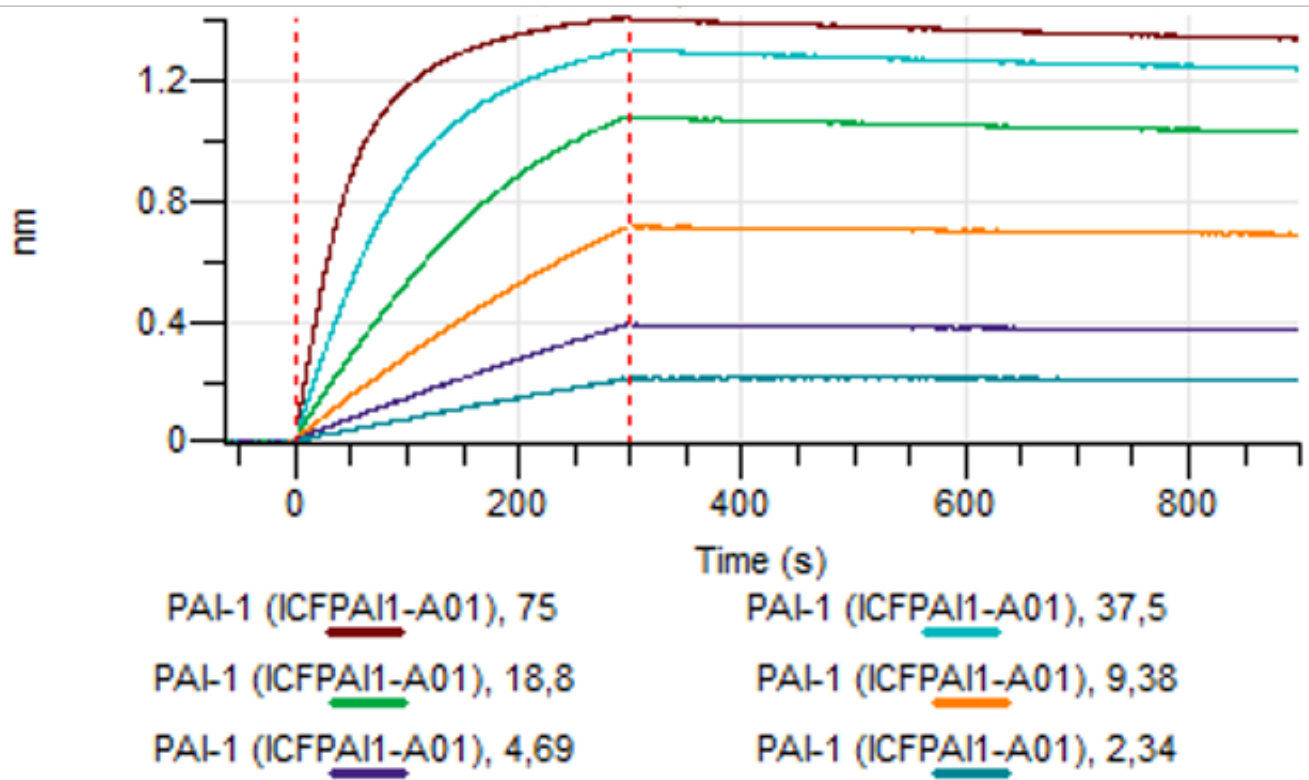
Peak #	RT (min)	Estimated Mw (Da)*	Area	Area %
1	8.721	149322	2818.97	100.00

## Chromatogram



\*Calculated using calibration curve obtained from AdvanceBio SEC 300A Protein Standard (p/n 5190-9417) retention times. Peaks with integrated areas below 0.5% of the calculated values were excluded from analysis.

**Figure 3.** HPLC analytical SEC after 3 freeze-thaw cycles.



**Figure 4.** Octet binding analysis, antibody was loaded on sensor for capture of PAI-1 protein in different concentrations.