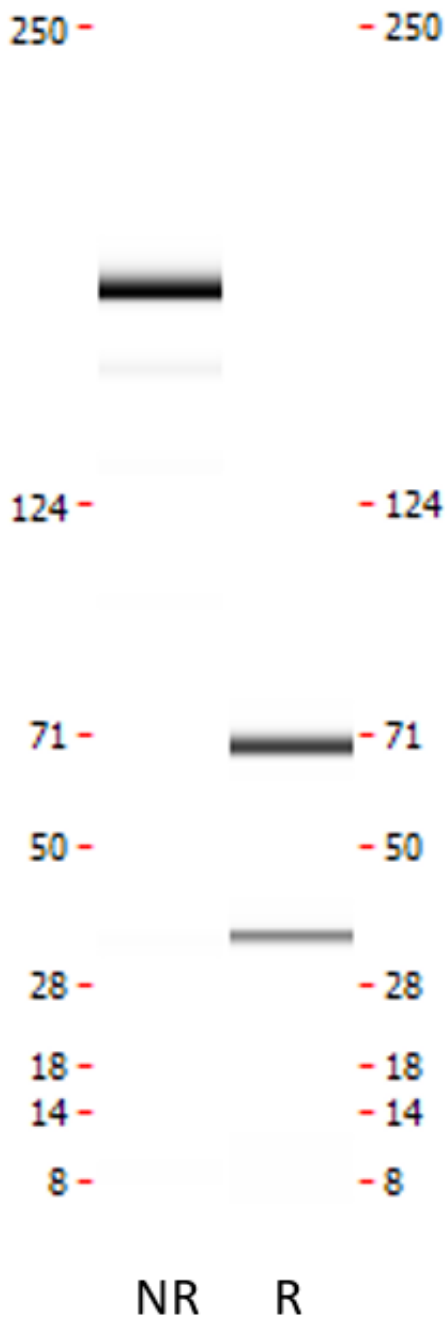




## Monoclonal antibody to PAI-1, clone 10H12, hlgG1

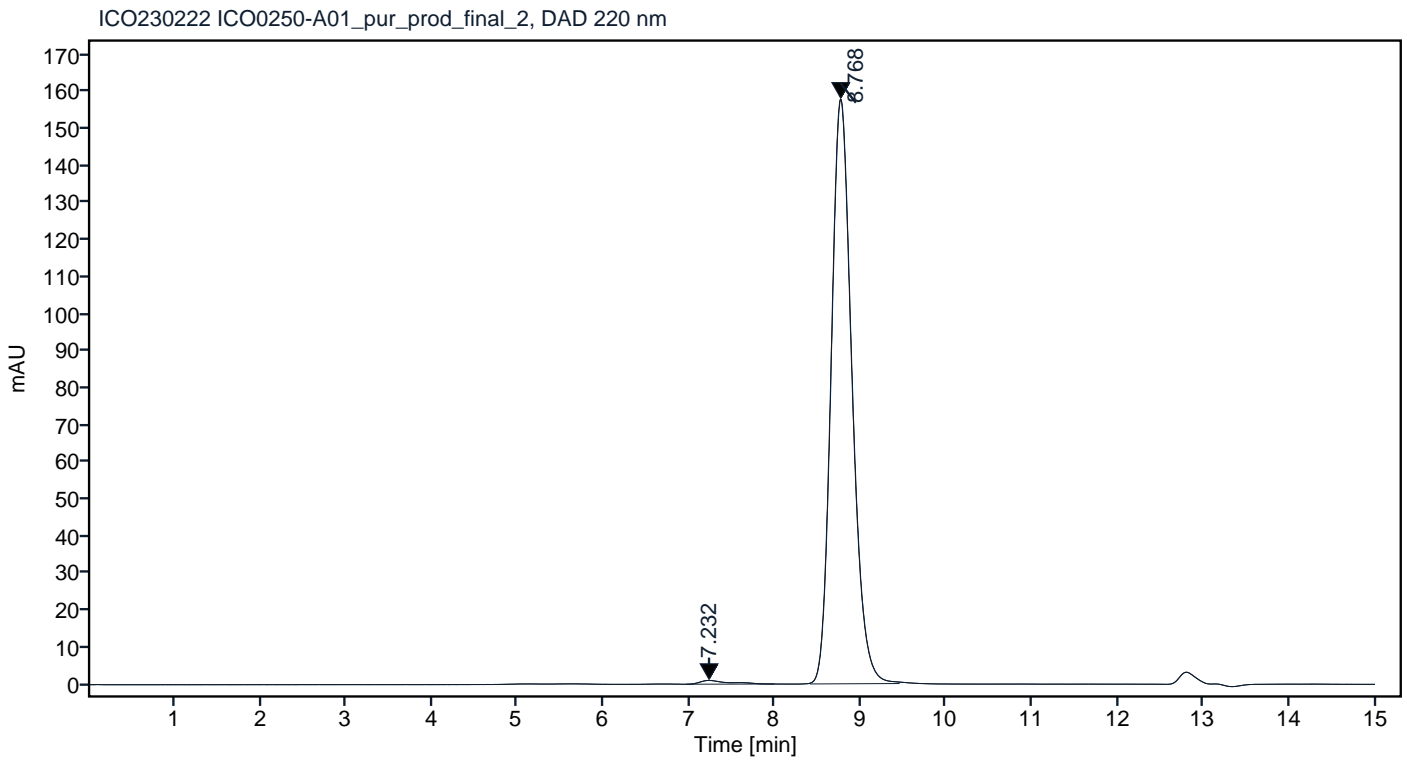
Catalogue #	R1-221-100
Immunogen:	Recombinant PAI-1 protein
Immunogen Description:	Recombinant PAI-1 protein produced by CHO-based cell line (expressed by QMCF Technology).
Source:	Human
Clonality:	Human monoclonal
Clone:	10H12
Class:	hlgG1
Application:	ELISA, CLIA
Kd:	2.809 x 10 <sup>-09</sup> M
Purification:	Produced recombinantly using CHO-based cell line (expressed by QMCF technology). Purified using protein A affinity chromatography followed by desalting
Purity:	>95%
Concentration:	1 mg/ml
Buffer:	PBS, pH 7.4
QC:	LabChip protein analysis, analytical SEC, Octet binding analysis
Shipping:	Shipped with blue ice.
Storage:	Store at +4 °C. Avoid multiple freeze-thaw cycles.



**Figure 1.** CE-SDS virtual gel output (LabChip GX) for monoclonal antibody to PAI-1, clone 10H12 under non-reduced (NR, left) and reduced (R, right) conditions.

Peak #	RT (min)	Estimated Mw (Da)*	Area	Area %
1	7.232	401551	23.44	0.87
2	8.768	144383	2662.80	99.13

## Chromatogram

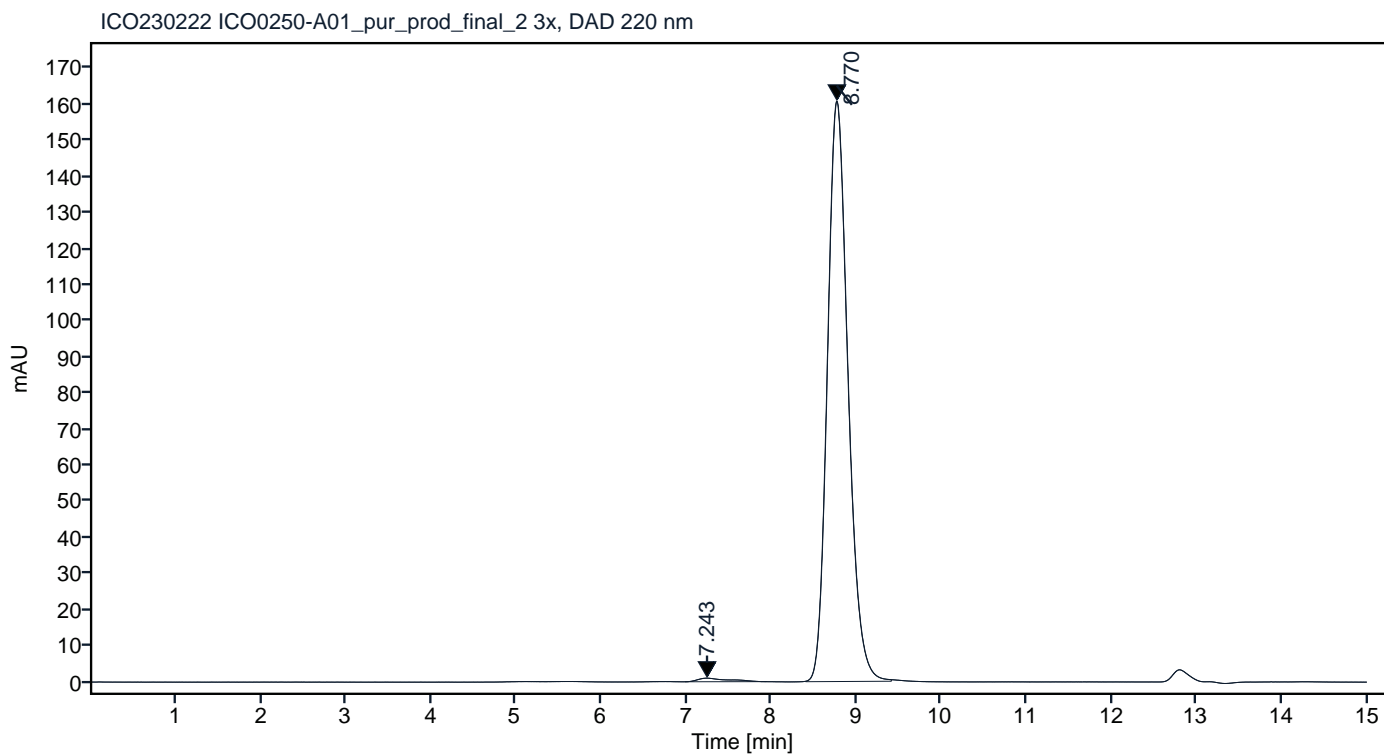


\*Calculated using calibration curve obtained from AdvanceBio SEC 300A Protein Standard (p/n 5190-9417) retention times. Peaks with integrated areas below 0.5% of the calculated values were excluded from analysis.

**Figure 2.** Analytical SEC of final product.

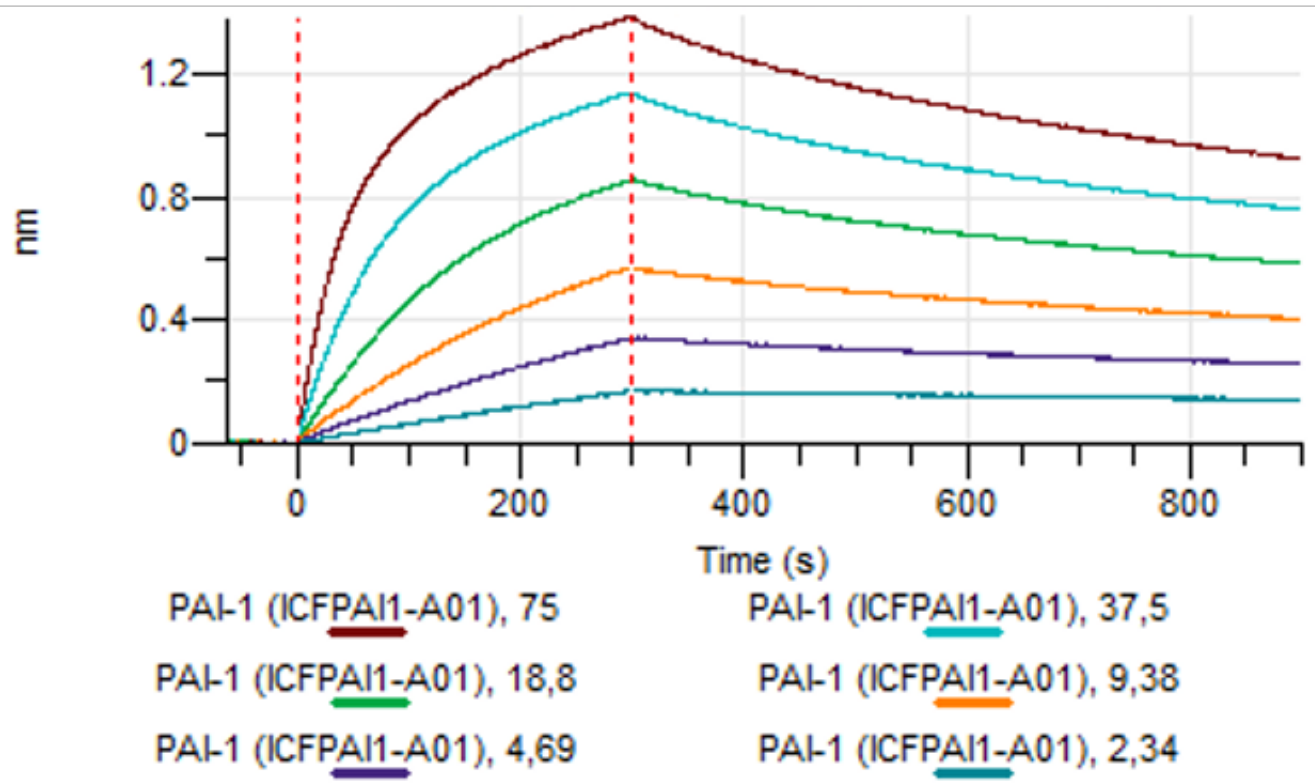
Peak #	RT (min)	Estimated Mw (Da)*	Area	Area %
1	7.243	397501	24.82	0.91
2	8.770	144268	2705.69	99.09

## Chromatogram



\*Calculated using calibration curve obtained from AdvanceBio SEC 300A Protein Standard (p/n 5190-9417) retention times. Peaks with integrated areas below 0.5% of the calculated values were excluded from analysis.

**Figure 3.** HPLC analytical SEC after 3 freeze-thaw cycles.



**Figure 4.** Octet binding analysis, antibody was loaded on sensor for capture of PAI-1 protein in different concentrations.