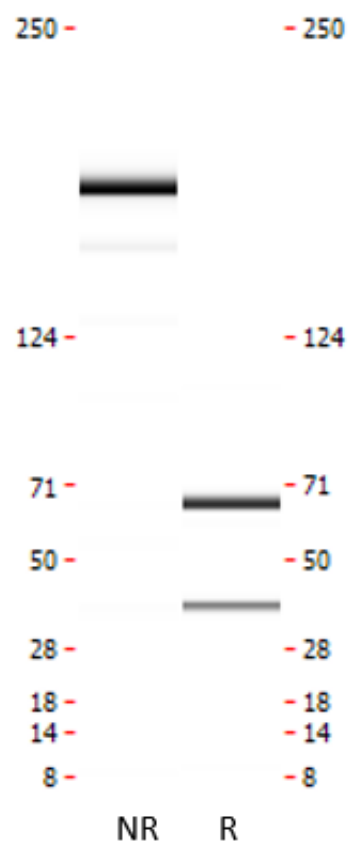


## Monoclonal antibody to FGF-21, clone 4F4, hIgG1

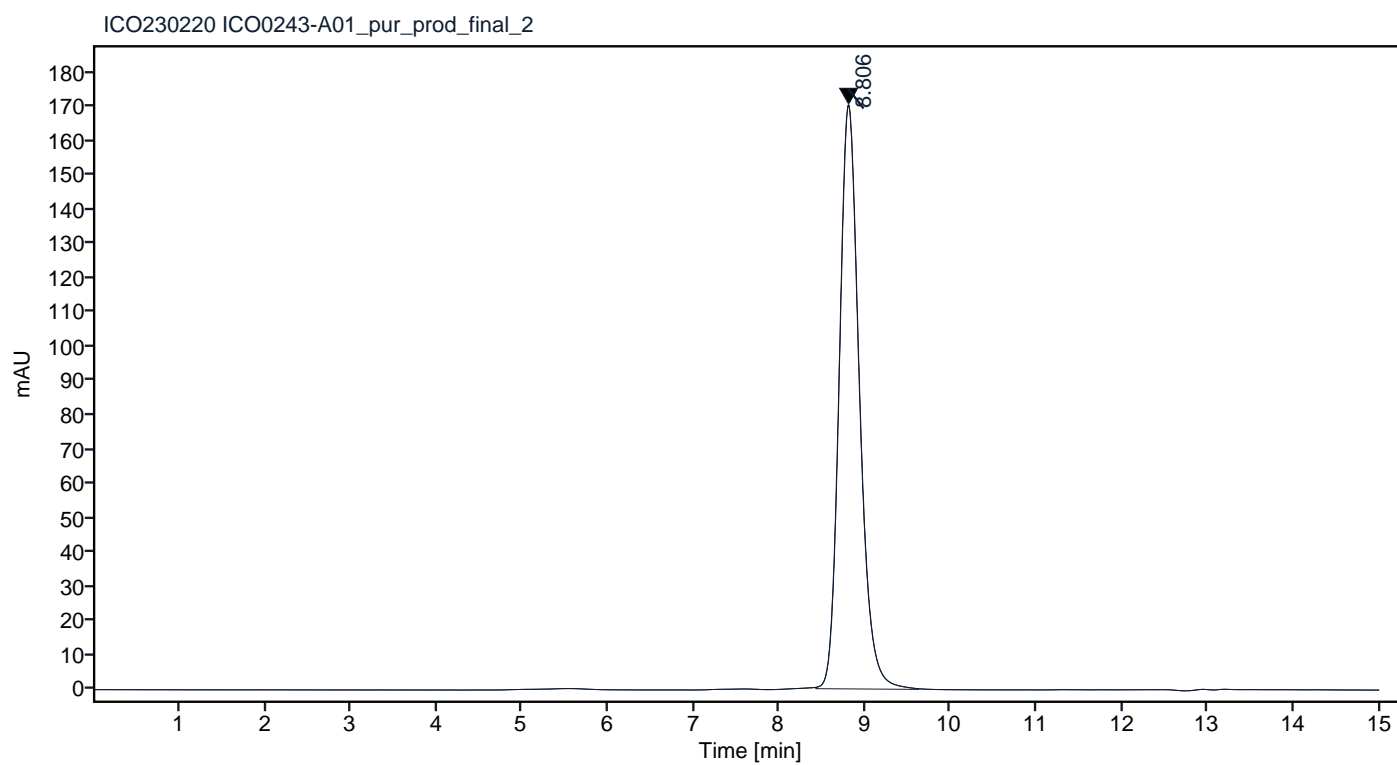
Catalogue #	R1-229-100
Immunogen:	Recombinant FGF-21 protein
Immunogen Description:	Recombinant FGF-21 protein produced by CHO-based cell line (expressed by QMCF Technology).
Source:	Human
Clonality:	Human monoclonal
Clone:	4F4
Class:	hIgG1
Application:	ELISA, CLIA
Kd:	$2.108 \times 10^{-08}$ M
Purification:	Produced recombinantly using CHO-based cell line (expressed by QMCF technology). Purified using protein A affinity chromatography followed by desalting and gelfiltration.
Purity:	>95%
Concentration:	1 mg/ml
Buffer:	PBS, pH 7.4
QC:	LabChip protein analysis, analytical SEC, Octet binding analysis
Shipping:	Shipped with blue ice.
Storage:	Store at +4 °C. Avoid multiple freeze-thaw cycles.



**Figure 1.** CE-SDS virtual gel output (LabChip GX) for monoclonal antibody to FGF-21, clone 4F4 under non-reduced (NR, left) and reduced (R, right) conditions.

Peak #	RT (min)	Estimated Mw (Da)*	Area	Area %
1	8.806	140462	2791.31	100.00

## Chromatogram

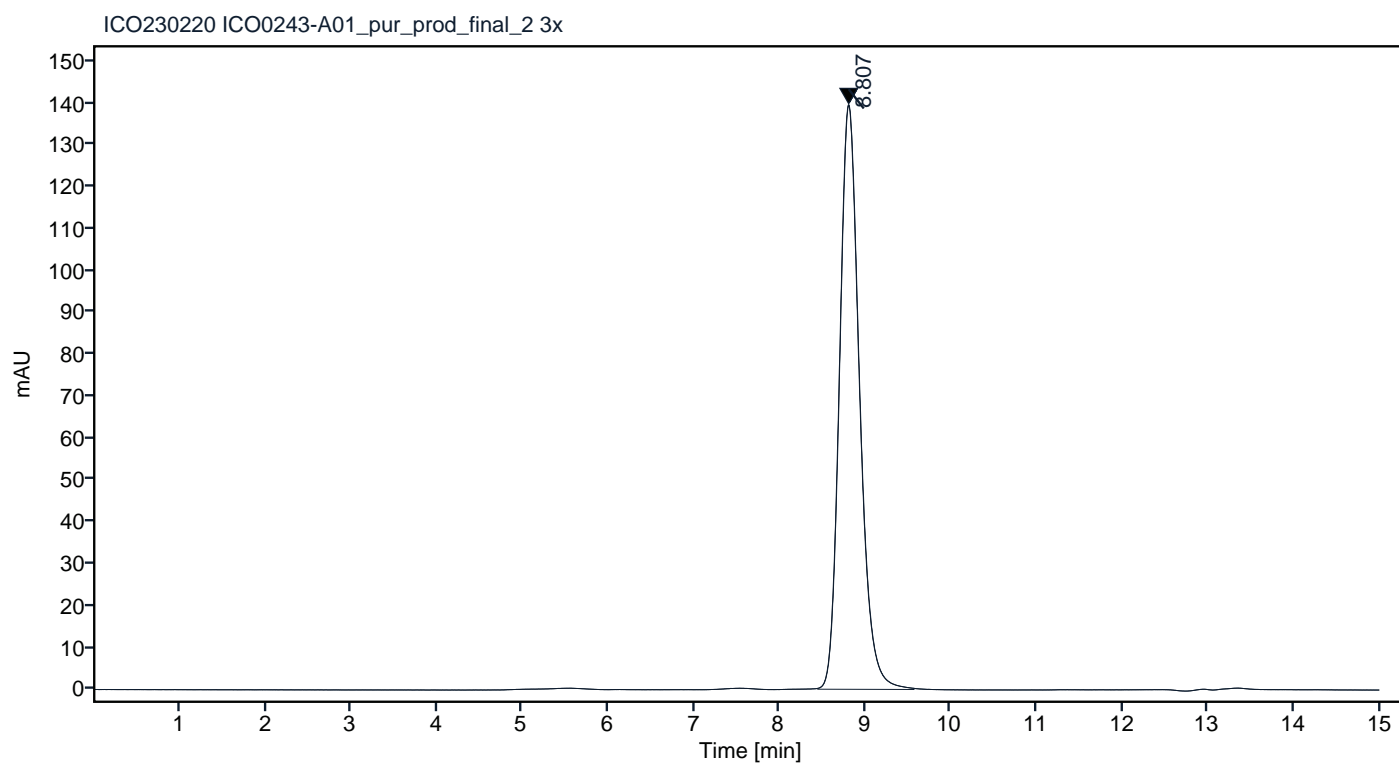


\*Calculated using calibration curve obtained from AdvanceBio SEC 300A Protein Standard (p/n 5190-9417) retention times

**Figure 2.** Analytical SEC of final product.

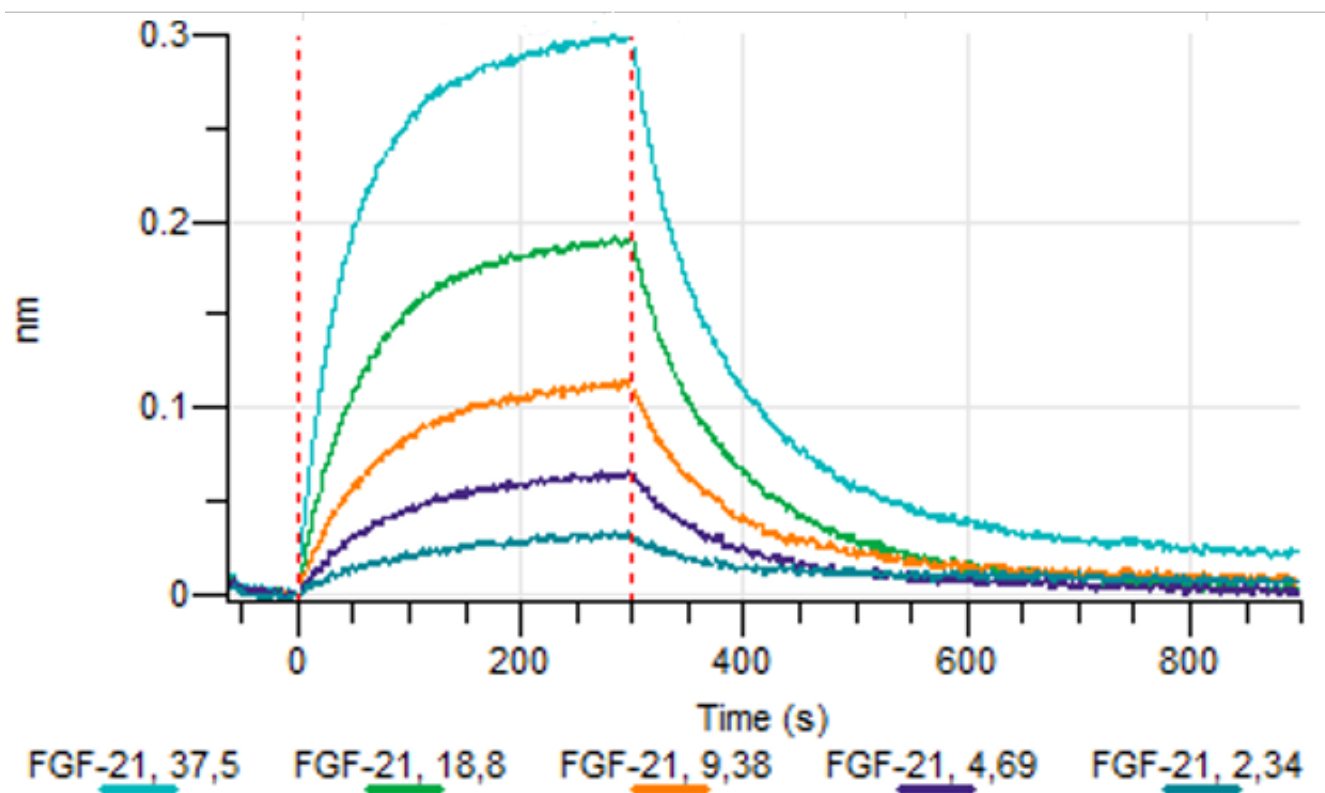
Peak #	RT (min)	Estimated Mw (Da)*	Area	Area %
1	8.807	140345	2277.33	100.00

## Chromatogram



\*Calculated using calibration curve obtained from AdvanceBio SEC 300A Protein Standard (p/n 5190-9417) retention times

**Figure 3.** HPLC analytical SEC after 3 freeze-thaw cycles.



**Figure 4.** Octet binding analysis, antibody was loaded on sensor for capture of FGF-21 protein in different concentrations.