



Monoclonal antibody to Cardiac troponin T, clone 3D3, hIgG1

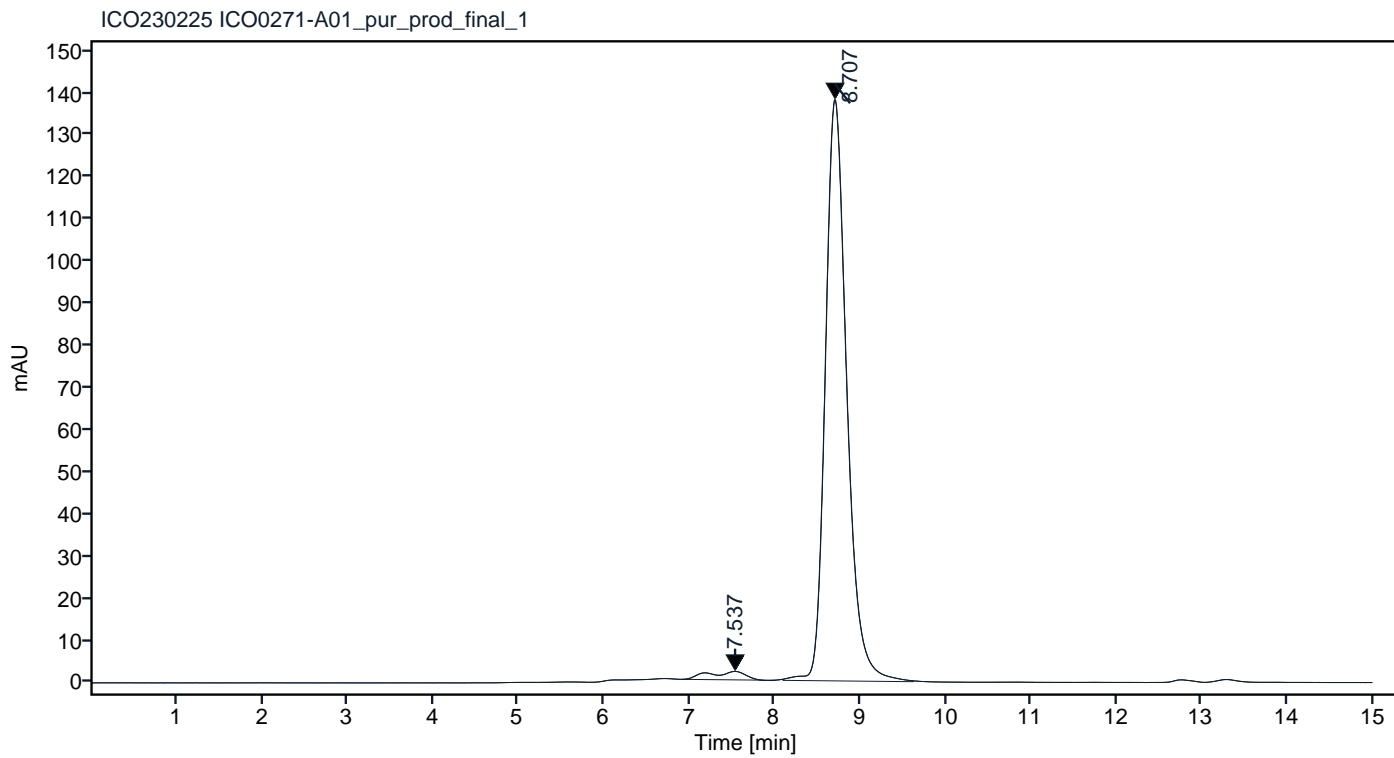
| | |
|------------------------|---|
| Catalogue # | R1-251-100 |
| Immunogen: | Recombinant human cardiac troponin complex |
| Immunogen Description: | Human cardiac troponin complex protein produced by CHO-based cell line (expressed by QMCF Technology). |
| Source: | Human |
| Clonality: | Human monoclonal |
| Clone: | 3D3 |
| Class: | hIgG1 |
| Application: | ELISA, CLIA |
| Kd: | 3.201×10^{-09} M |
| Purification: | Produced recombinantly using CHO-based cell line (expressed by QMCF technology). Purified using protein A affinity chromatography followed by desalting |
| Purity: | >90% |
| Concentration: | 1 mg/ml |
| Buffer: | PBS, pH 7.4 |
| QC: | LabChip protein analysis, analytical SEC, Octet BLI analysis |
| Shipping: | Shipped with blue ice. |
| Storage: | Store at +4 °C. |



Figure 1. CE-SDS virtual gel output (LabChip GX) for monoclonal antibody to Cardiac troponin T, clone 3D3 under non-reduced (NR, left) and reduced (R, right) conditions.

| Peak # | RT (min) | Estimated Mw (Da)* | Area | Area % |
|--------|----------|--------------------|---------|--------|
| 1 | 7.537 | 391756 | 59.22 | 2.40 |
| 2 | 8.707 | 149549 | 2410.52 | 97.60 |

Chromatogram

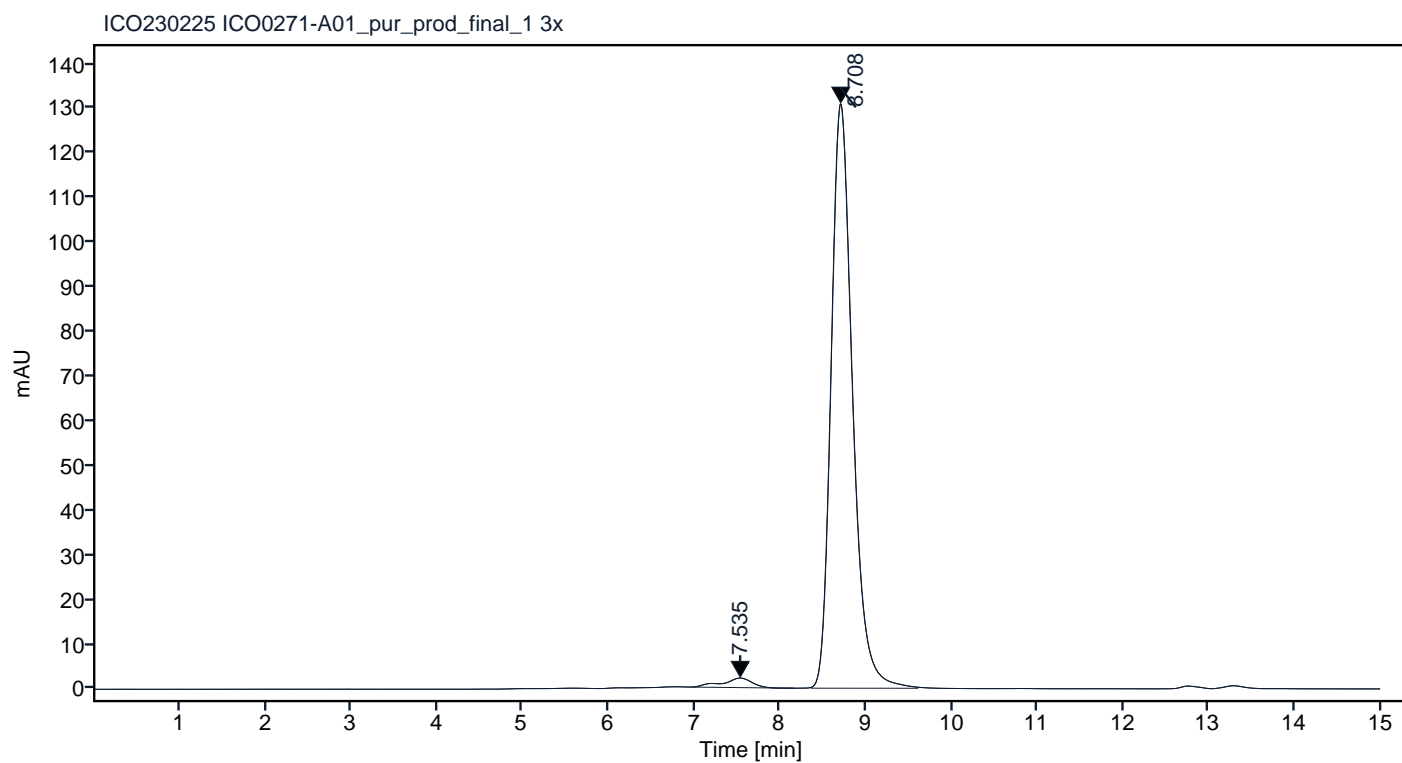


*Calculated using calibration curve obtained from AdvanceBio SEC 300A Protein Standard (p/n 5190-9417) retention times

Figure 2. Analytical SEC of final product.

| Peak # | RT (min) | Estimated Mw (Da)* | Area | Area % |
|--------|----------|--------------------|---------|--------|
| 1 | 7.535 | 373411 | 51.77 | 2.23 |
| 2 | 8.708 | 149798 | 2268.50 | 97.77 |

Chromatogram



*Calculated using calibration curve obtained from AdvanceBio SEC 300A Protein Standard (p/n 5190-9417) retention times

Figure 3. HPLC analytical SEC after 3 freeze-thaw cycles.

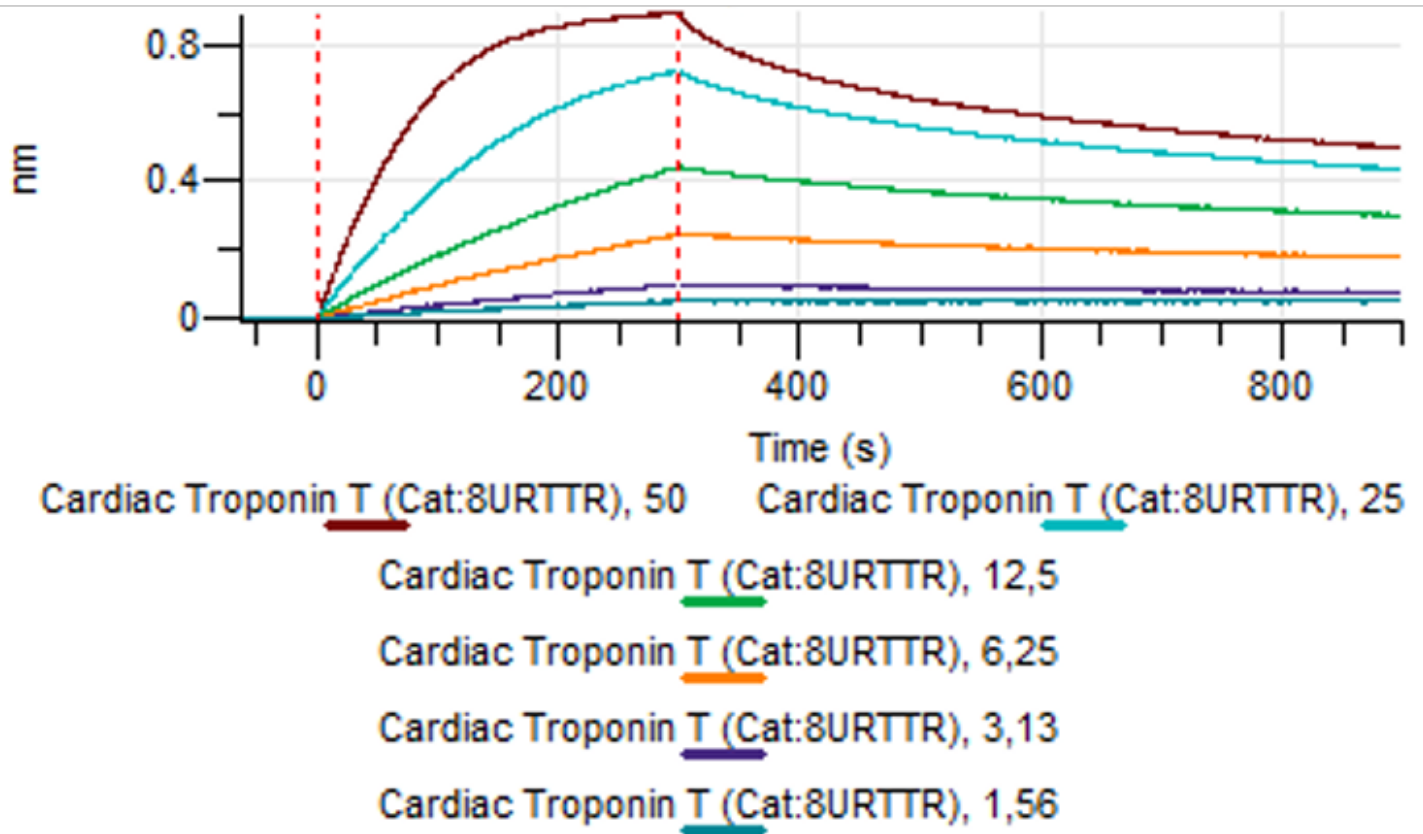


Figure 4. Octet BLI analysis, antibody was loaded on sensor for capture of Cardiac troponin T protein in different concentrations.