

Monoclonal antibody to Cardiac troponin T, clone 3D3, hIgG1

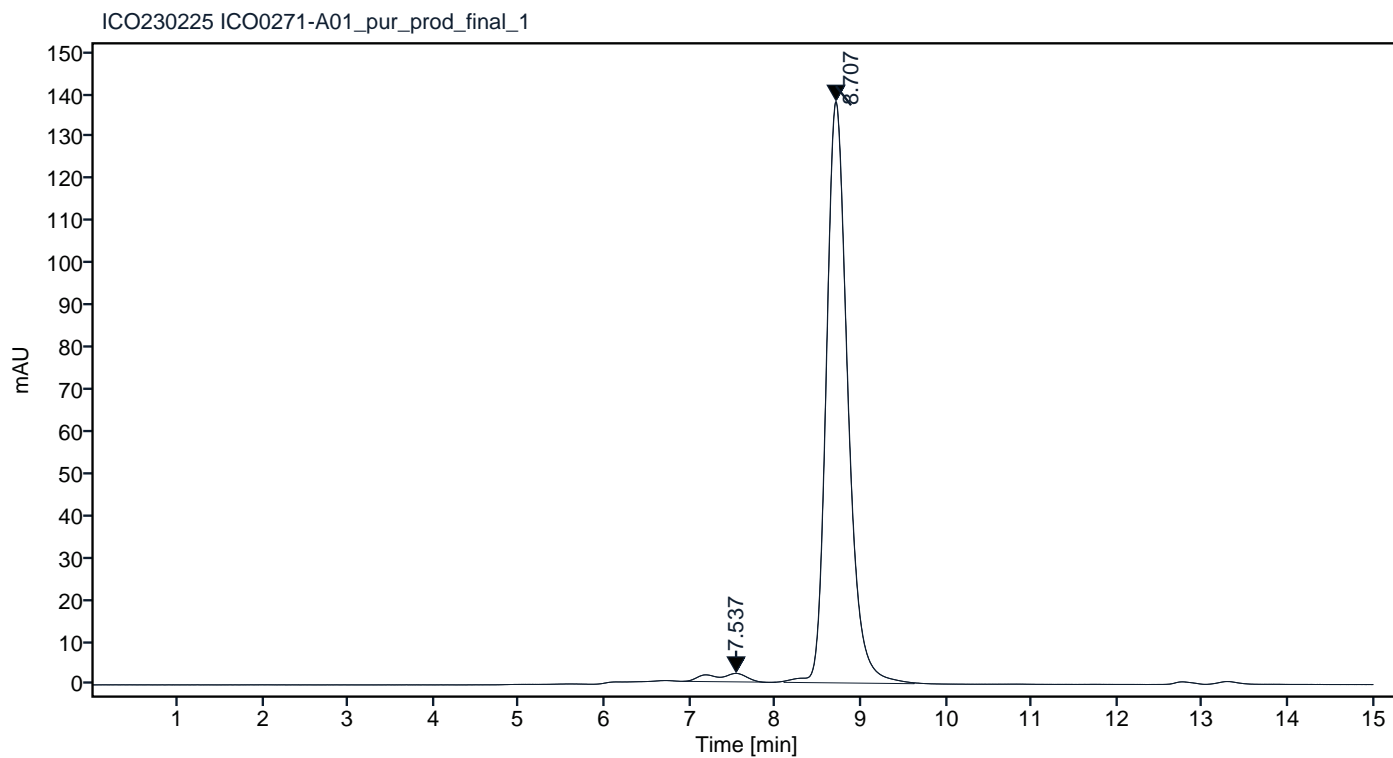
Catalogue #	R1-251-100
Immunogen:	Recombinant human cardiac troponin complex
Immunogen Description:	Human cardiac troponin complex protein produced by CHO-based cell line (expressed by QMCF Technology).
Source:	Human
Clonality:	Human monoclonal
Clone:	3D3
Class:	hIgG1
Application:	ELISA, CLIA
Kd:	3.201×10^{-09} M
Purification:	Produced recombinantly using CHO-based cell line (expressed by QMCF technology). Purified using protein A affinity chromatography followed by desalting
Purity:	>90%
Concentration:	1 mg/ml
Buffer:	PBS, pH 7.4
QC:	LabChip protein analysis, analytical SEC, Octet BLI analysis
Shipping:	Shipped with blue ice.
Storage:	Store at +4 °C.



Figure 1. CE-SDS virtual gel output (LabChip GX) for monoclonal antibody to Cardiac troponin T, clone 3D3 under non-reduced (NR, left) and reduced (R, right) conditions.

Peak #	RT (min)	Estimated Mw (Da)*	Area	Area %
1	7.537	391756	59.22	2.40
2	8.707	149549	2410.52	97.60

Chromatogram

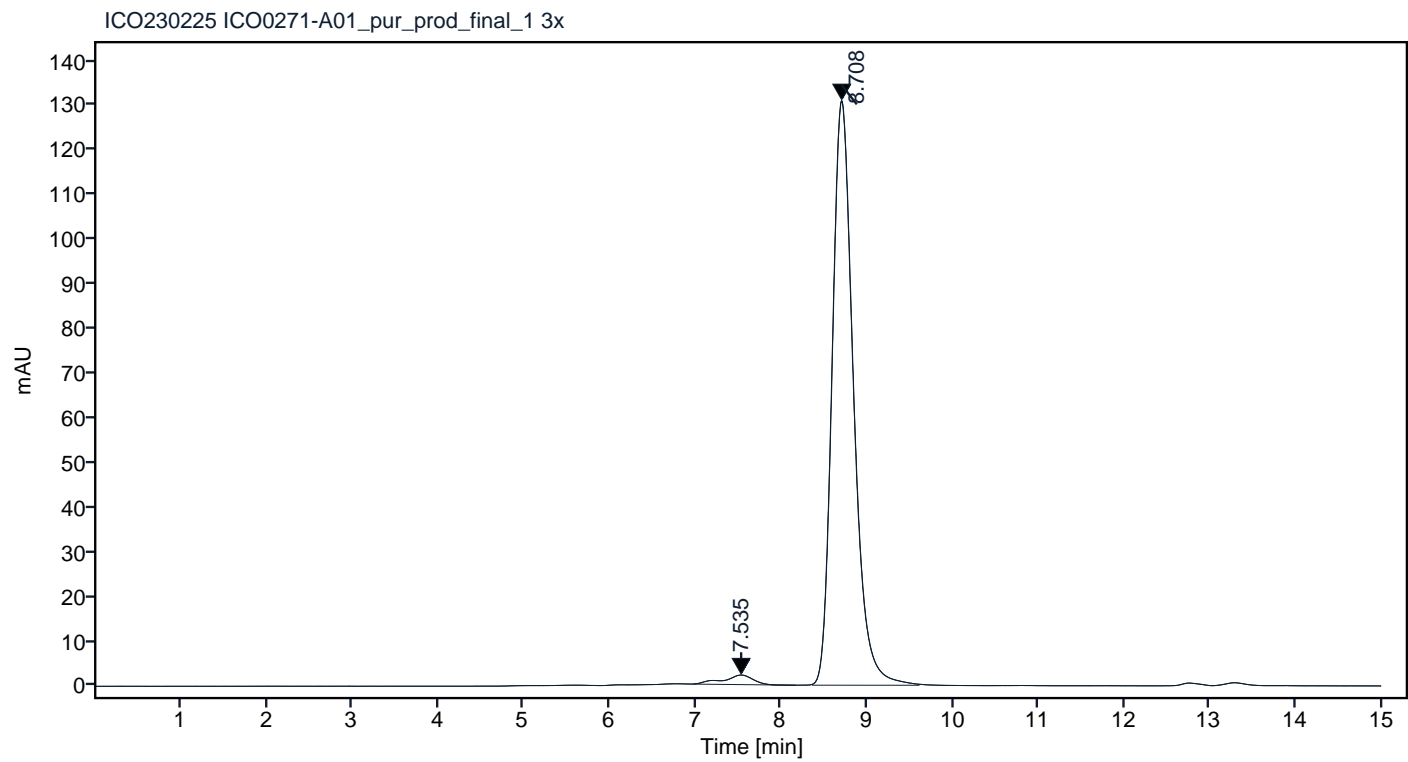


*Calculated using calibration curve obtained from AdvanceBio SEC 300A Protein Standard (p/n 5190-9417) retention times

Figure 2. Analytical SEC of final product.

Peak #	RT (min)	Estimated Mw (Da)*	Area	Area %
1	7.535	373411	51.77	2.23
2	8.708	149798	2268.50	97.77

Chromatogram



*Calculated using calibration curve obtained from AdvanceBio SEC 300A Protein Standard (p/n 5190-9417) retention times

Figure 3. HPLC analytical SEC after 3 freeze-thaw cycles.

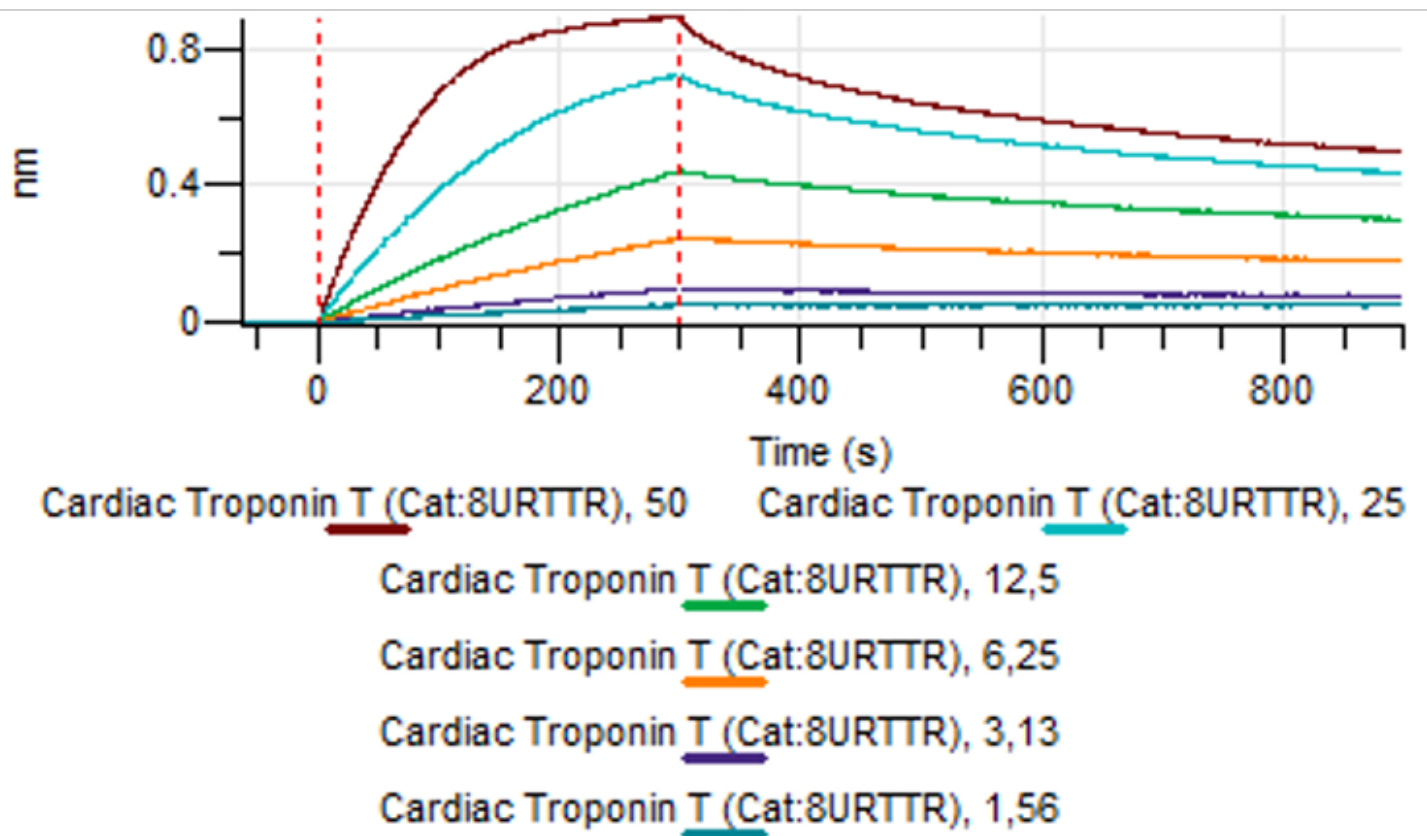


Figure 4. Octet BLI analysis, antibody was loaded on sensor for capture of Cardiac troponin T protein in different concentrations.