



## Monoclonal antibody to Cardiac troponin T, clone 1H11, hIgG1

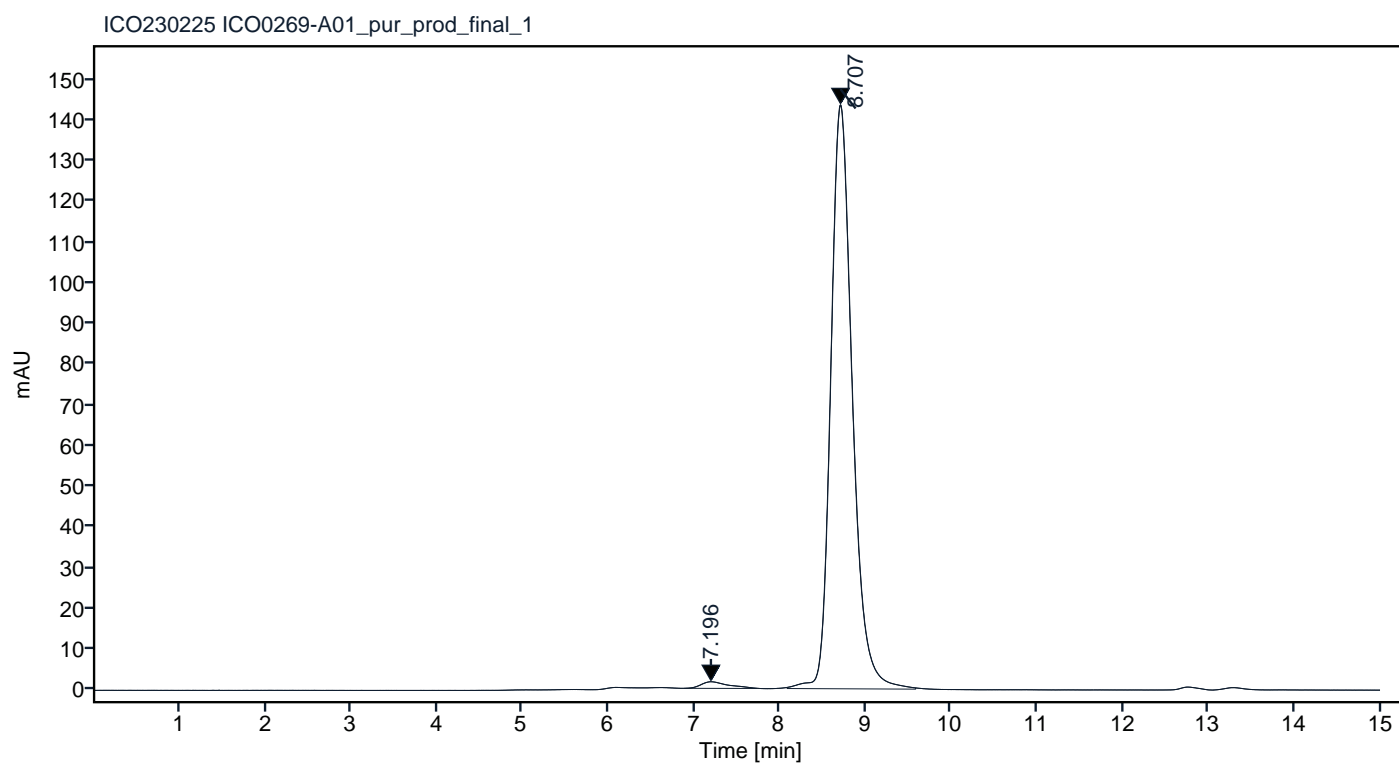
Catalogue #	R1-249-100
Immunogen:	Human cardiac troponin T
Immunogen Description:	Human cardiac troponin complex protein produced by CHO-based cell line (expressed by QMCF Technology).
Source:	Human
Clonality:	Human monoclonal
Clone:	1H11
Class:	hIgG1
Application:	ELISA, CLIA
Kd:	2.457 x 10 <sup>-09</sup> M
Purification:	Produced recombinantly using CHO-based cell line (expressed by QMCF technology). Purified using protein A affinity chromatography followed by desalting
Purity:	>95%
Concentration:	1 mg/ml
Buffer:	PBS, pH 7.4
QC:	LabChip protein analysis, analytical SEC, Octet binding analysis
Shipping:	Shipped with blue ice.
Storage:	Store at +4 °C. Avoid multiple freeze-thaw cycles.



**Figure 1.** CE-SDS virtual gel output (LabChip GX) for monoclonal antibody to Cardiac troponin T, clone 1H11 under non-reduced (NR, left) and reduced (R, right) conditions.

Peak #	RT (min)	Estimated Mw (Da)*	Area	Area %
1	7.196	425544	36.33	1.42
2	8.707	150496	2513.85	98.58

## Chromatogram

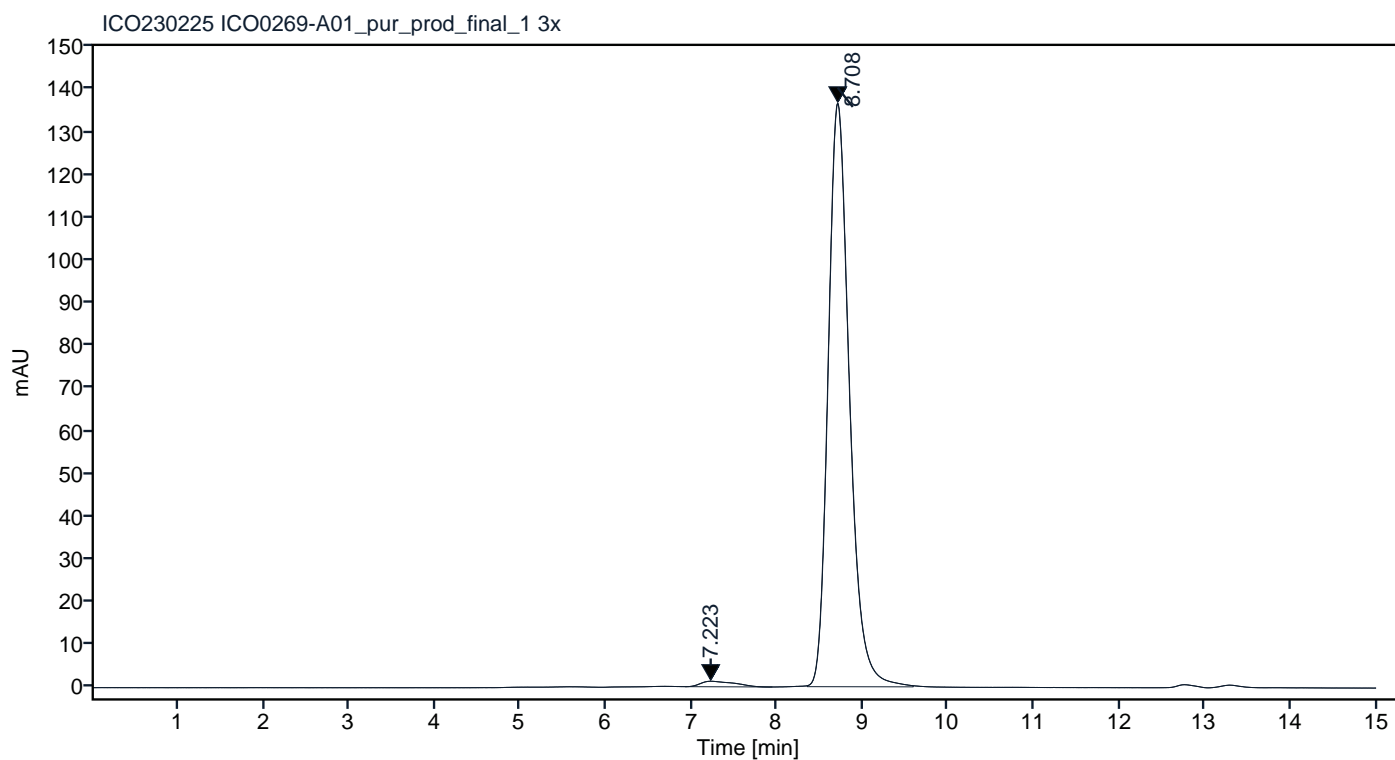


\*Calculated using calibration curve obtained from AdvanceBio SEC 300A Protein Standard (p/n 5190-9417) retention times

**Figure 2.** Analytical SEC of final product.

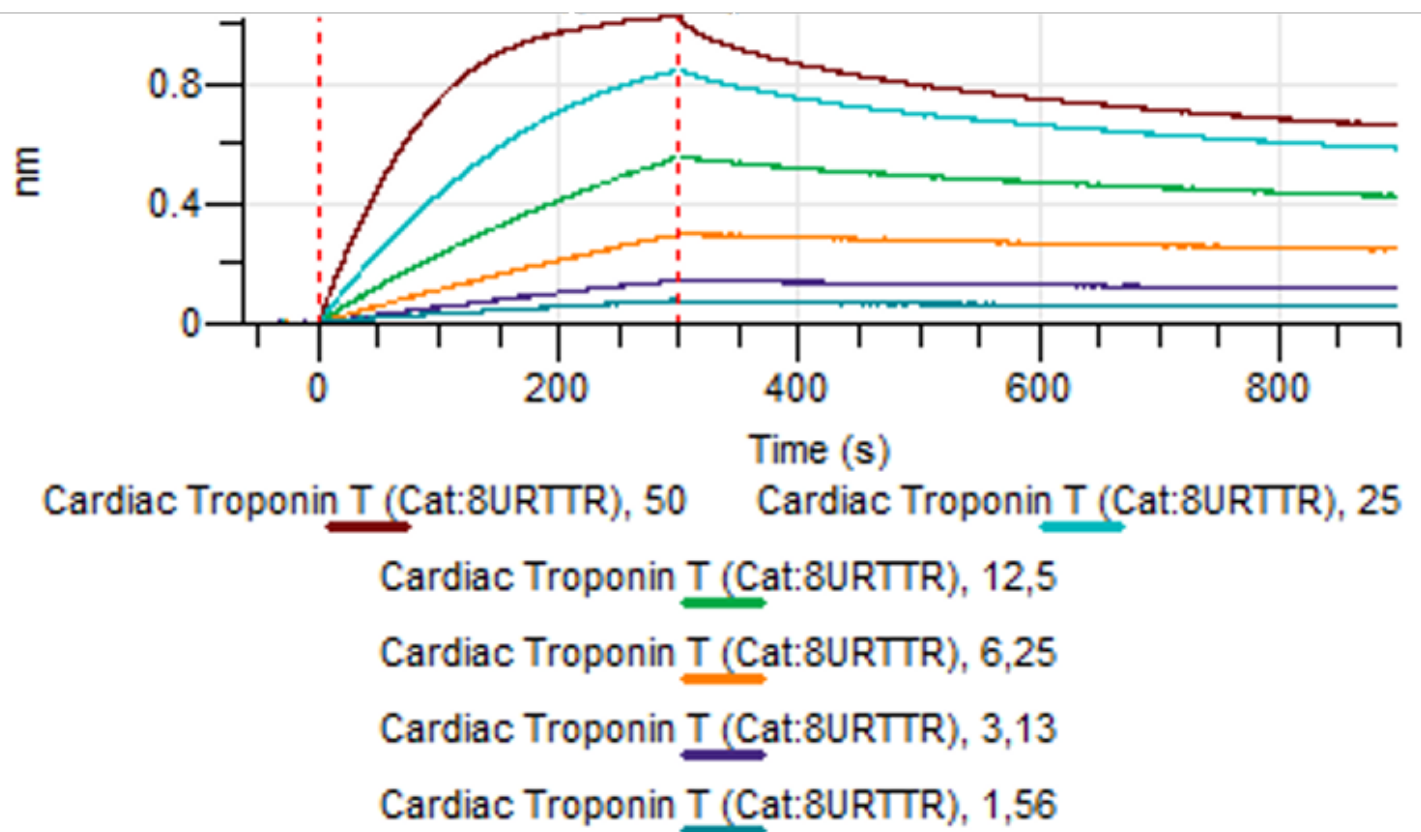
Peak #	RT (min)	Estimated Mw (Da)*	Area	Area %
1	7.223	407606	35.30	1.47
2	8.708	149936	2361.73	98.53

## Chromatogram



\*Calculated using calibration curve obtained from AdvanceBio SEC 300A Protein Standard (p/n 5190-9417) retention times

**Figure 3.** HPLC analytical SEC after 3 freeze-thaw cycles.



**Figure 4.** Octet binding analysis, antibody was loaded on sensor for capture of Cardiac troponin T protein in different concentrations.