



Monoclonal antibody to Cardiac troponin T, clone 1D3, hIgG1

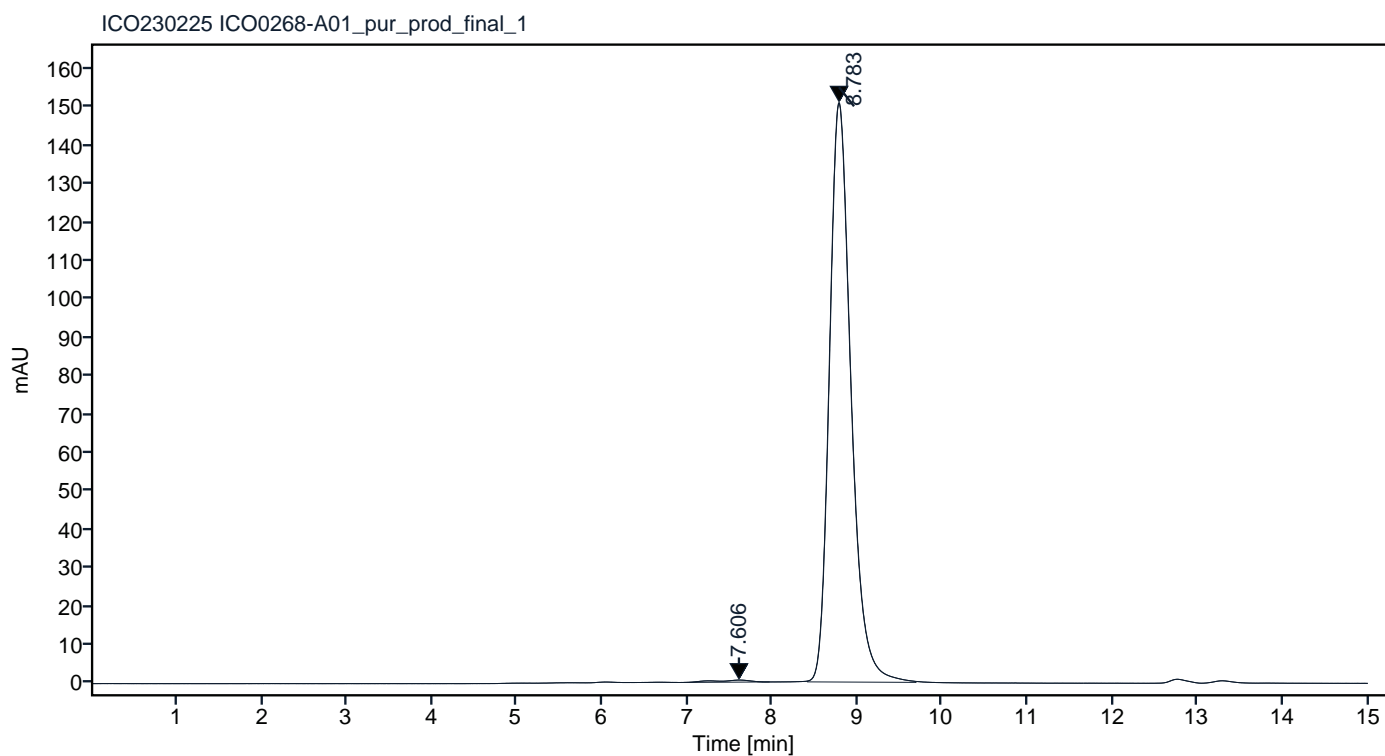
Catalogue #	R1-248-100
Immunogen:	Recombinant human cardiac troponin complex
Immunogen Description:	Human cardiac troponin complex protein produced by CHO-based cell line (expressed by QMCF Technology).
Source:	Human
Clonality:	Human monoclonal
Clone:	1D3
Class:	hIgG1
Application:	ELISA, CLIA
Kd:	1.195 x 10 ⁻⁰⁹ M
Purification:	Produced recombinantly using CHO-based cell line (expressed by QMCF technology). Purified using protein A affinity chromatography followed by desalting
Purity:	>90%
Concentration:	1 mg/ml
Buffer:	PBS, pH 7.4
QC:	LabChip protein analysis, analytical SEC, Octet BLI analysis
Shipping:	Shipped with blue ice.
Storage:	Store at +4 °C.



Figure 1. CE-SDS virtual gel output (LabChip GX) for monoclonal antibody to Cardiac troponin T, clone 1D3 under non-reduced (NR, left) and reduced (R, right) conditions.

Peak #	RT (min)	Estimated Mw (Da)*	Area	Area %
1	7.606	372707	15.90	0.59
2	8.783	141137	2667.37	99.41

Chromatogram

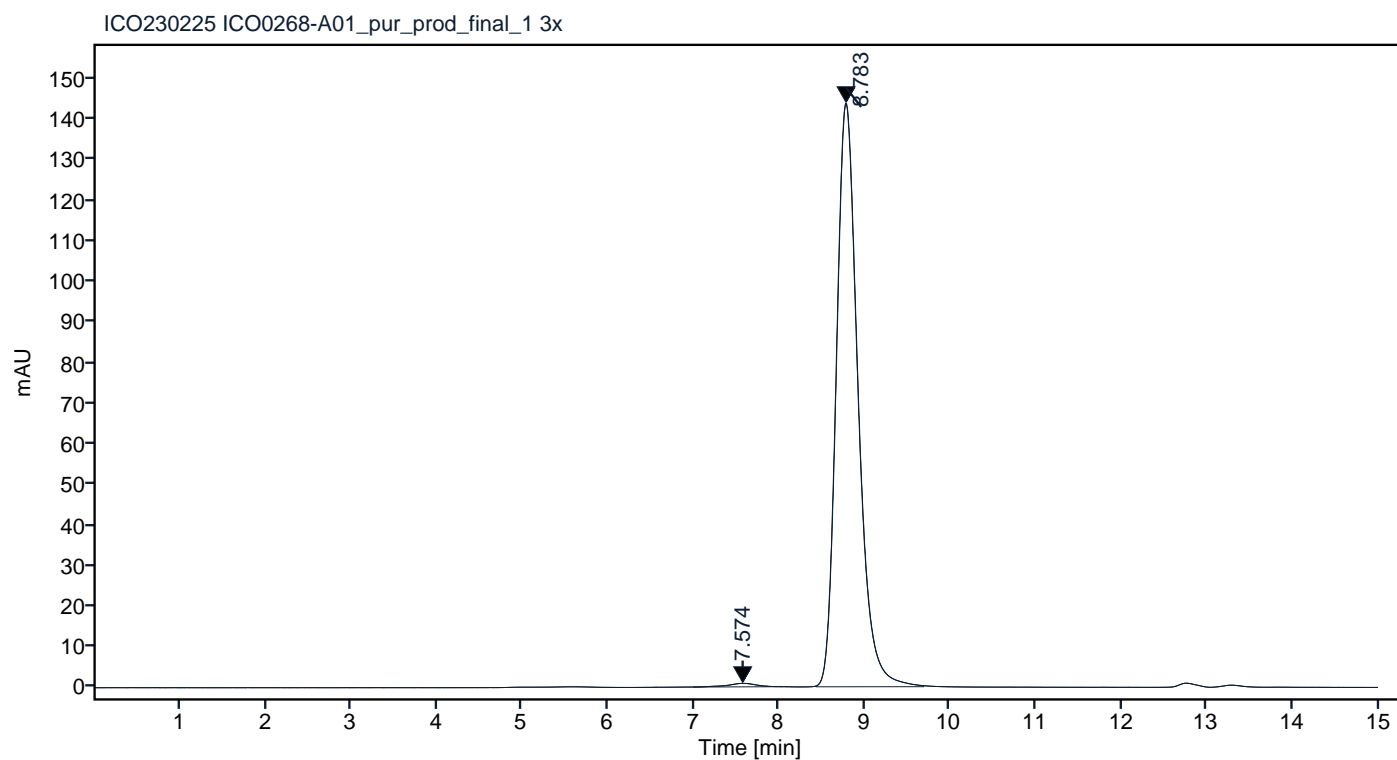


*Calculated using calibration curve obtained from AdvanceBio SEC 300A Protein Standard (p/n 5190-9417) retention times

Figure 2. Analytical SEC of final product.

Peak #	RT (min)	Estimated Mw (Da)*	Area	Area %
1	7.574	348951	19.57	0.77
2	8.783	141161	2535.86	99.23

Chromatogram



*Calculated using calibration curve obtained from AdvanceBio SEC 300A Protein Standard (p/n 5190-9417) retention times

Figure 3. HPLC analytical SEC after 3 freeze-thaw cycles.

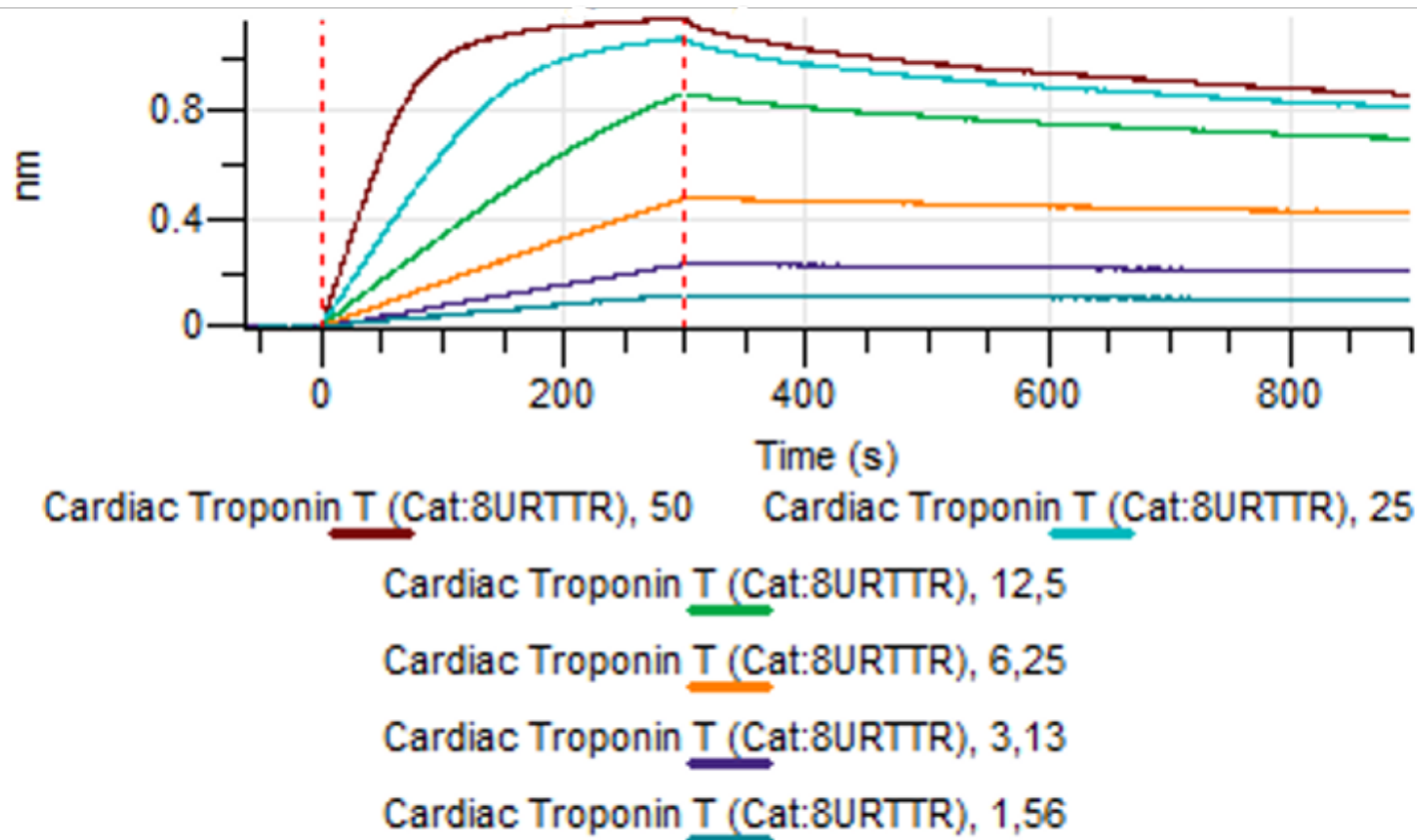


Figure 4. Octet BLI analysis, antibody was loaded on sensor for capture of Cardiac troponin T protein in different concentrations.