



Monoclonal antibody to D-dimer, clone 2H6, hIgG1

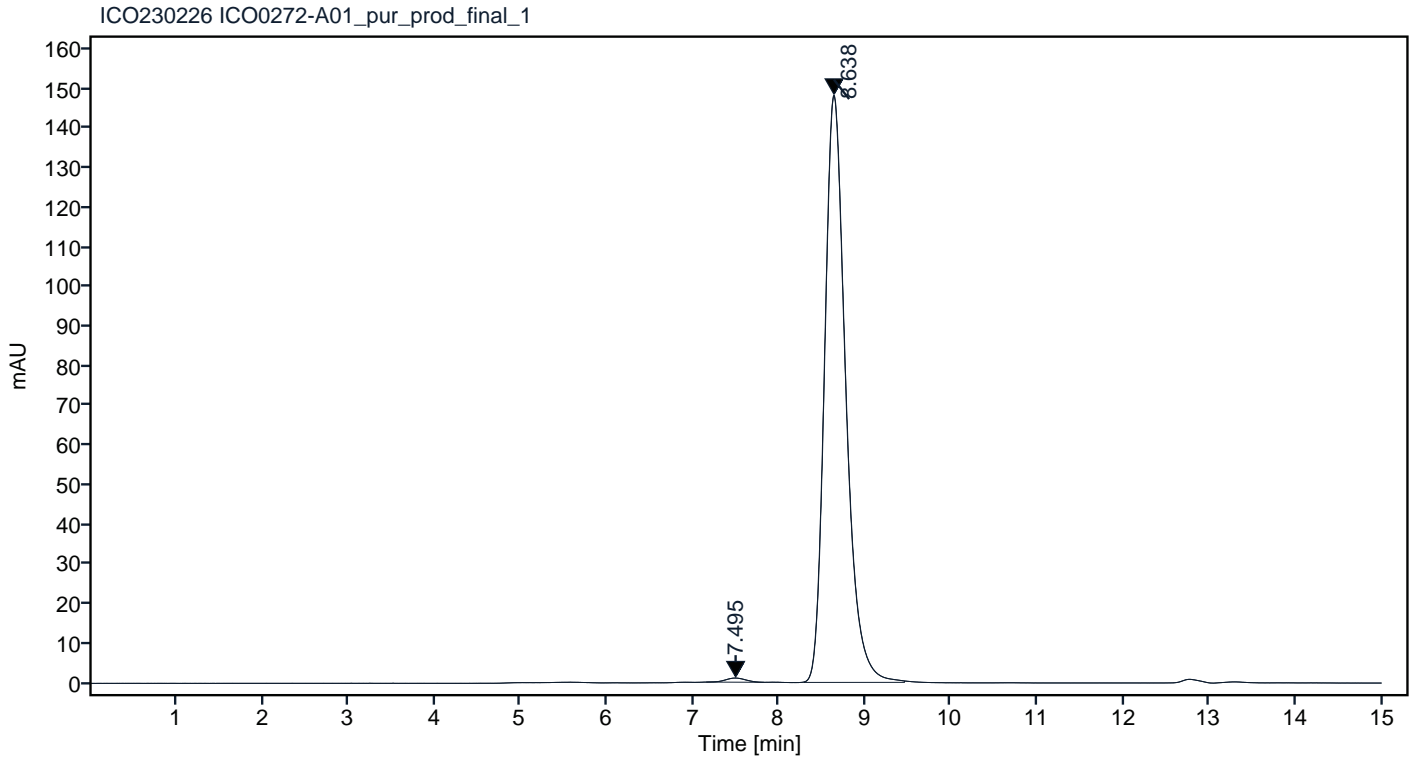
Catalogue #	R1-252-100
Immunogen:	Native human D-dimer protein
Immunogen Description:	Native human D-dimer protein purified from human plasma.
Source:	Human
Clonality:	Human monoclonal
Clone:	2H6
Class:	hIgG1
Application:	ELISA, CLIA
Kd:	7.928 x 10 ⁻¹⁰ M
Purification:	Produced recombinantly using CHO-based cell line (expressed by QMCF technology). Purified using protein A affinity chromatography followed by desalting
Purity:	>90%
Concentration:	1 mg/ml
Buffer:	PBS, pH 7.4
QC:	LabChip protein analysis, analytical SEC, Octet BLI analysis
Shipping:	Shipping with blue ice.
Storage:	Store at +4 °C.



Figure 1. CE-SDS virtual gel output (LabChip GX) for monoclonal antibody to D-dimer, clone 2H6 under non-reduced (NR, left) and reduced (R, right) conditions.

Peak #	RT (min)	Estimated Mw (Da)*	Area	Area %
1	7.495	362813	16.88	0.66
2	8.638	157115	2530.81	99.34

Chromatogram

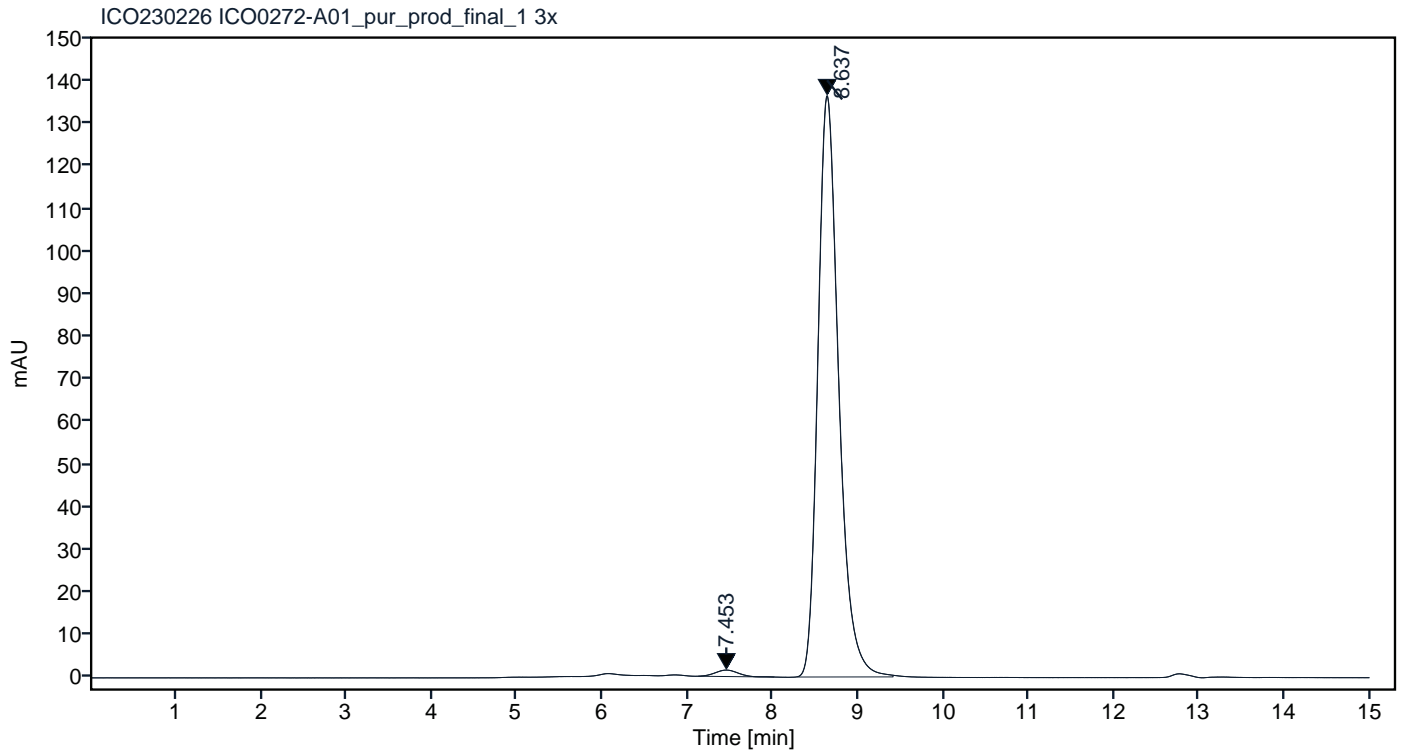


*Calculated using calibration curve obtained from AdvanceBio SEC 300A Protein Standard (p/n 5190-9417) retention times

Figure 2. Analytical SEC of final product.

Peak #	RT (min)	Estimated Mw (Da)*	Area	Area %
1	7.453	371688	28.15	1.20
2	8.637	157570	2319.42	98.80

Chromatogram



*Calculated using calibration curve obtained from AdvanceBio SEC 300A Protein Standard (p/n 5190-9417) retention times

Figure 3. HPLC analytical SEC after 3 freeze-thaw cycles.

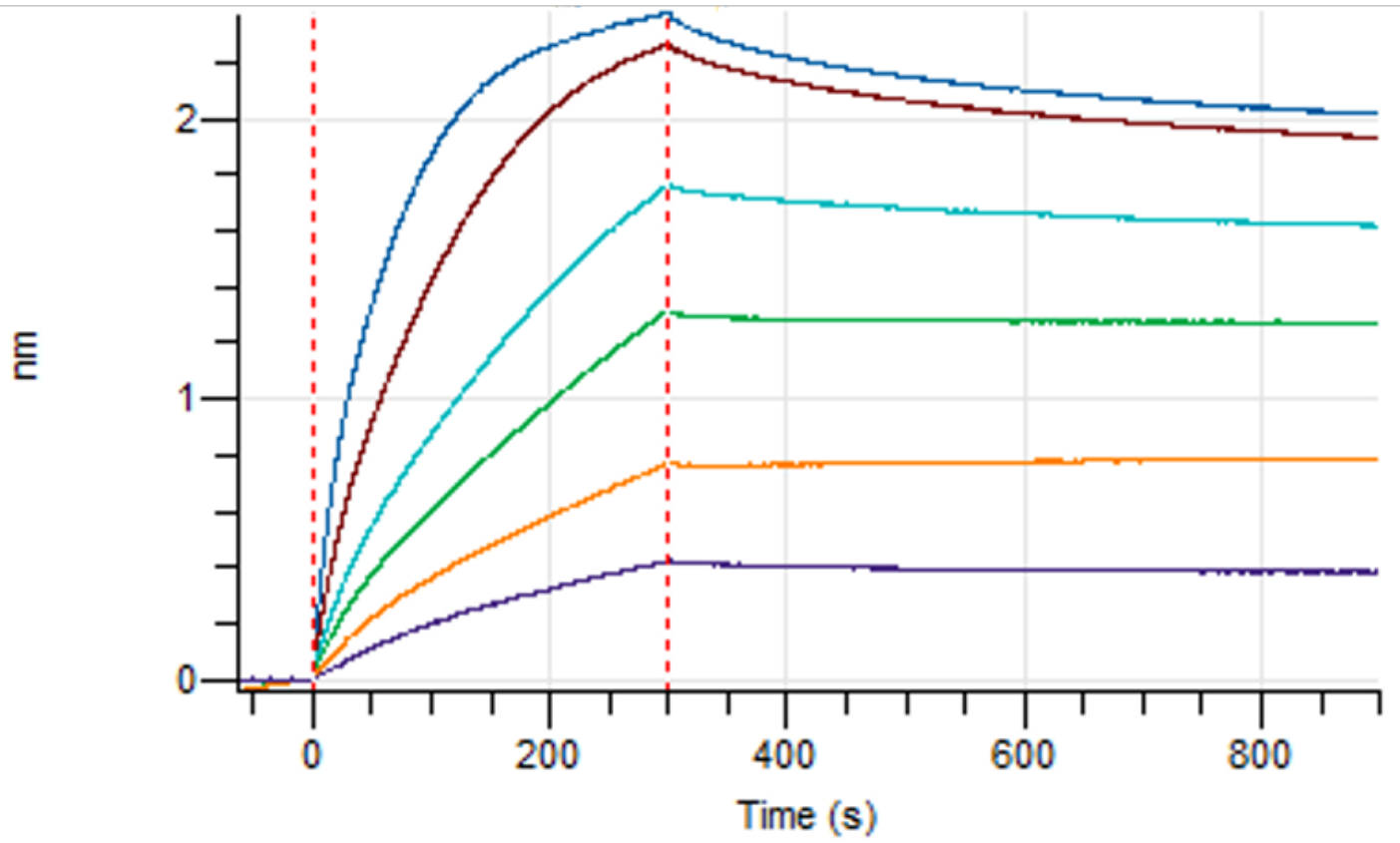


Figure 4. Octet BLI analysis, antibody was loaded on sensor for capture of D-dimer protein in different concentrations.