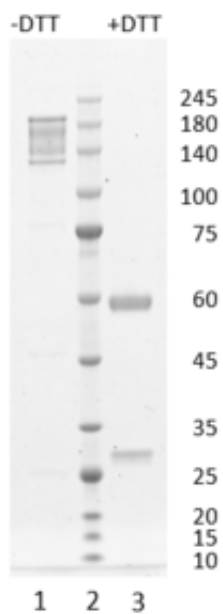




## Monoclonal antibody to RBP4, clone 11A6, hlgG1

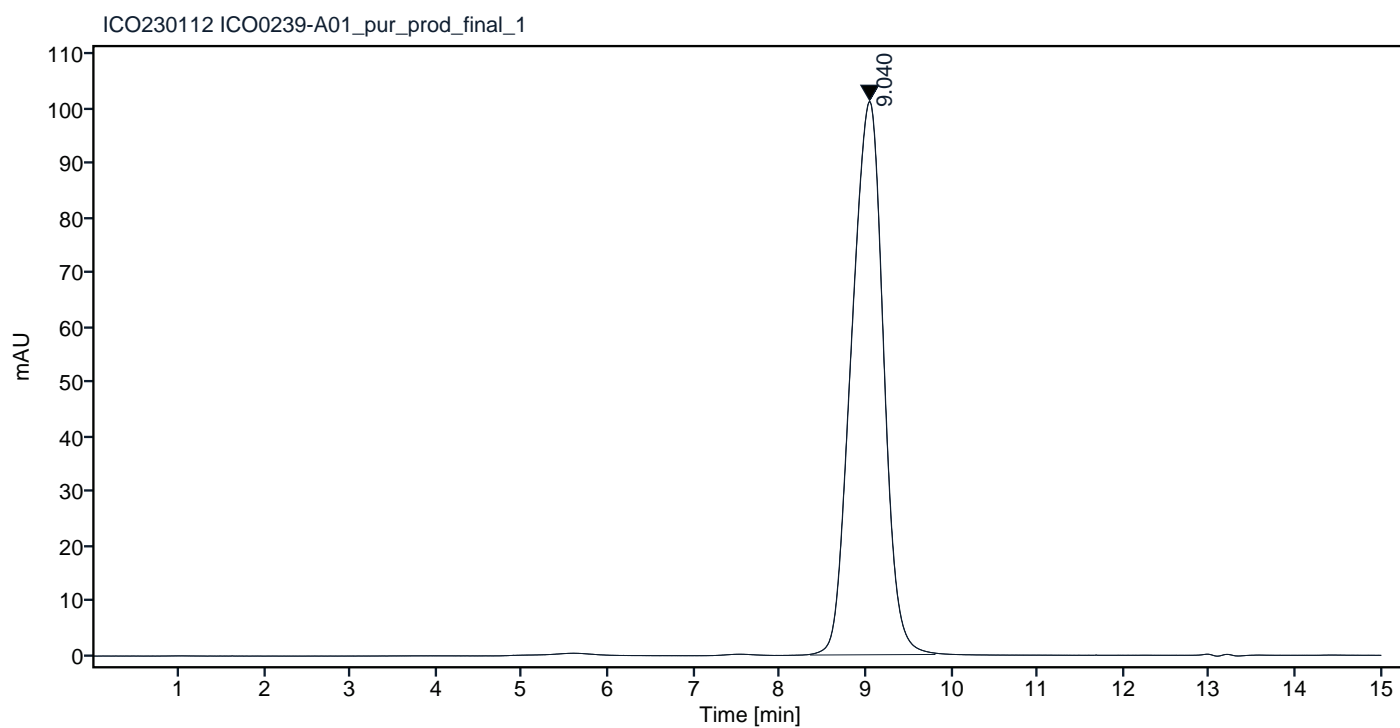
Catalogue #	R1-652-100
Immunogen:	Recombinant RBP4-His protein
Immunogen Description:	Recombinant RBP4 protein produced by CHO-based cell line (expressed by QMCF Technology).
Clonality:	Human monoclonal
Clone:	11A6
Class:	hlgG1
Application:	ELISA, CLIA
Kd:	1.64 x 10 <sup>-09</sup> M
Purification:	Protein A affinity chromatography following gel filtration
Concentration:	1 mg/ml
Buffer:	PBS pH 7.4
QC:	Simply Blue Safe stained SDS-PAGE, analytical SEC, Octet binding
Shipping:	Shipped with blue ice.
Storage:	Store at +4 °C. Avoid multiple freeze-thaw cycles.



**Figure 1.** Simply Blue Safe stained SDS-PAGE analysis of monoclonal antibody to RBP4, clone 11A6. 4-12% gel is used for analysis. Lane 1. Monoclonal antibody to RBP4, clone 11A62 (-DTT) Lane 2. Size marker Lane 3. Monoclonal antibody to RBP4, clone 11A6(+DTT)

## Peak Table

RT	Area	Area %
9.040	2609.8	100.00



**Figure 2.** HPLC analytical SEC for final product.

Peak Table

RT	Area	Area %
7.811	25.4	0.95
9.040	2633.9	99.05

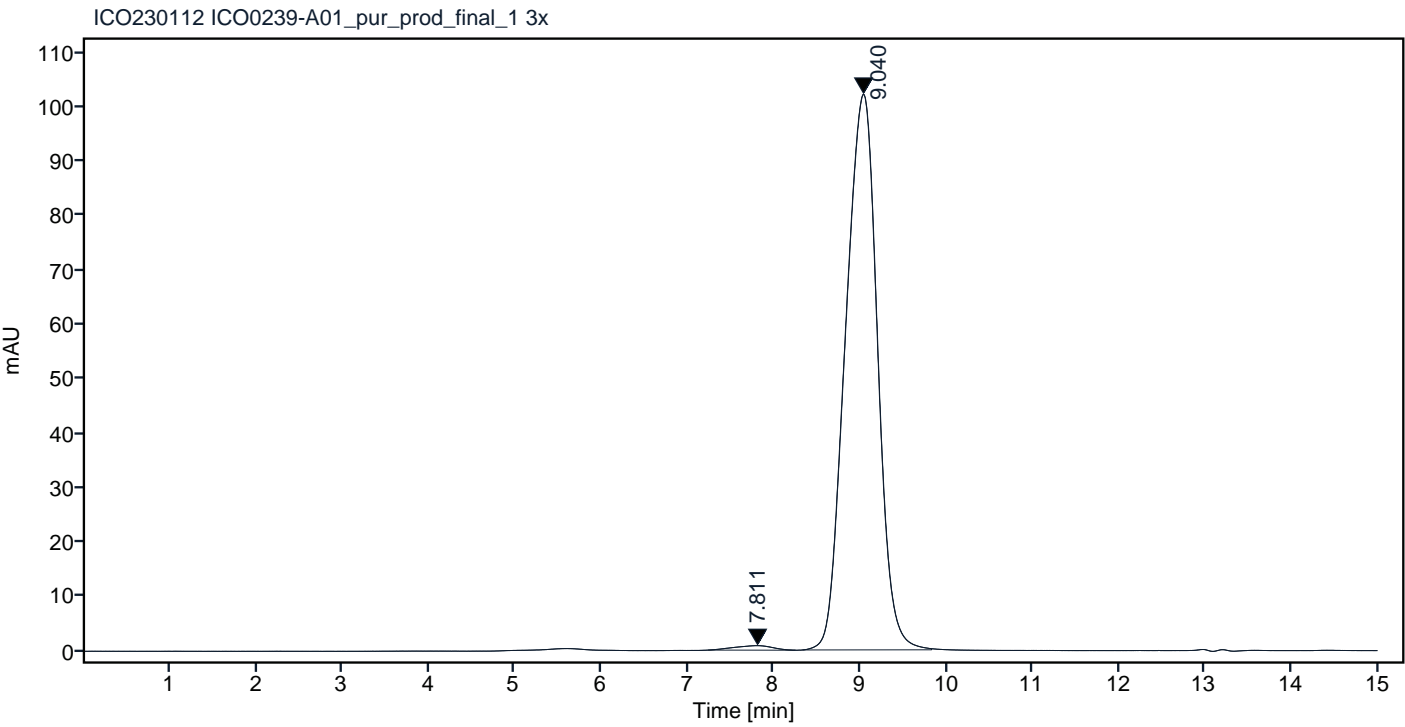
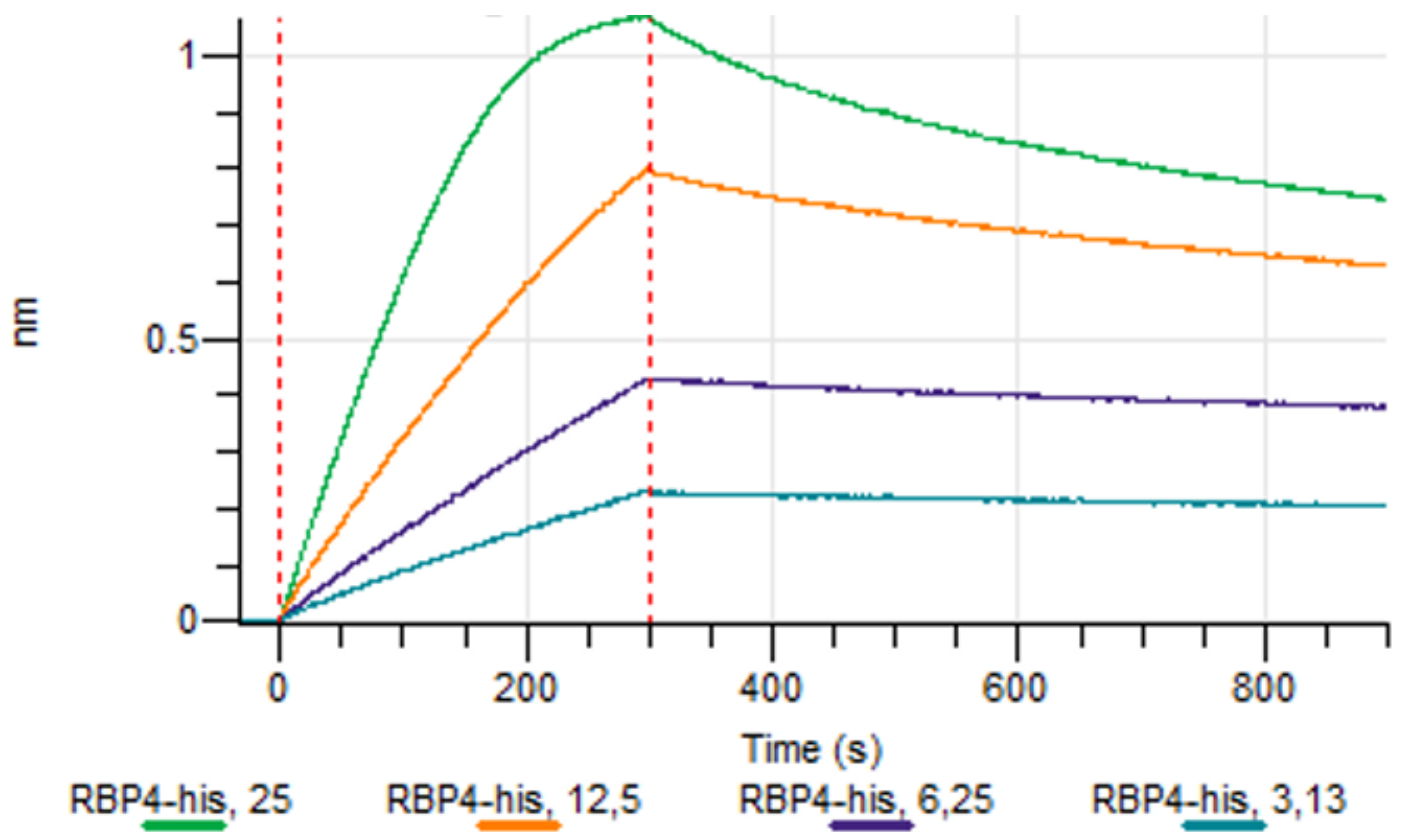


Figure 3. HPLC analytical SEC for final product.



**Figure 4.** Octet RED96e analysis, antibody was loaded on sensor for capture of RBP4-His protein in different concentrations.