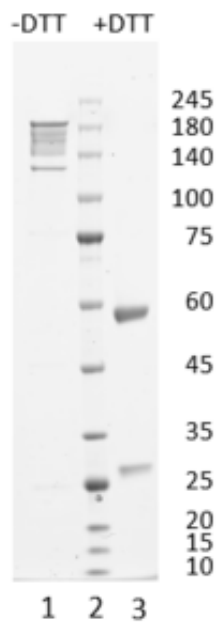




## Monoclonal antibody to RBP4, clone 10G3, hIgG1

Catalogue #	R1-651-100
Immunogen:	Recombinant RBP4-His protein
Immunogen Description:	Recombinant RBP4 protein produced by CHO-based cell line (expressed by QMCF Technology).
Source:	Human
Clonality:	Human monoclonal
Clone:	10G3
Class:	hIgG1
Application:	ELISA, CLIA
Kd:	$7.83 \times 10^{-10}$ M
Purification:	Protein A affinity chromatography following gel filtration
Concentration:	1 mg/ml
Buffer:	PBS pH 7.4
QC:	Simply Blue Safe stained SDS-PAGE, analytical SEC, Octet binding
Shipping:	Shipped with blue ice.
Storage:	Store at +4 °C. Avoid multiple freeze-thaw cycles.



**Figure 1.** Simply Blue Safe stained SDS-PAGE analysis of monoclonal antibody to RBP4, clone 10G3. 4-12% gel is used for analysis. Lane 1. Monoclonal antibody to RBP4, clone 10G3 (-DTT) Lane 2. Size marker Lane 3. Monoclonal antibody to RBP4, clone 10G3 (+DTT)

Peak Table

RT	Area	Area %
7.762	13.1	0.50
9.200	2579.7	99.50

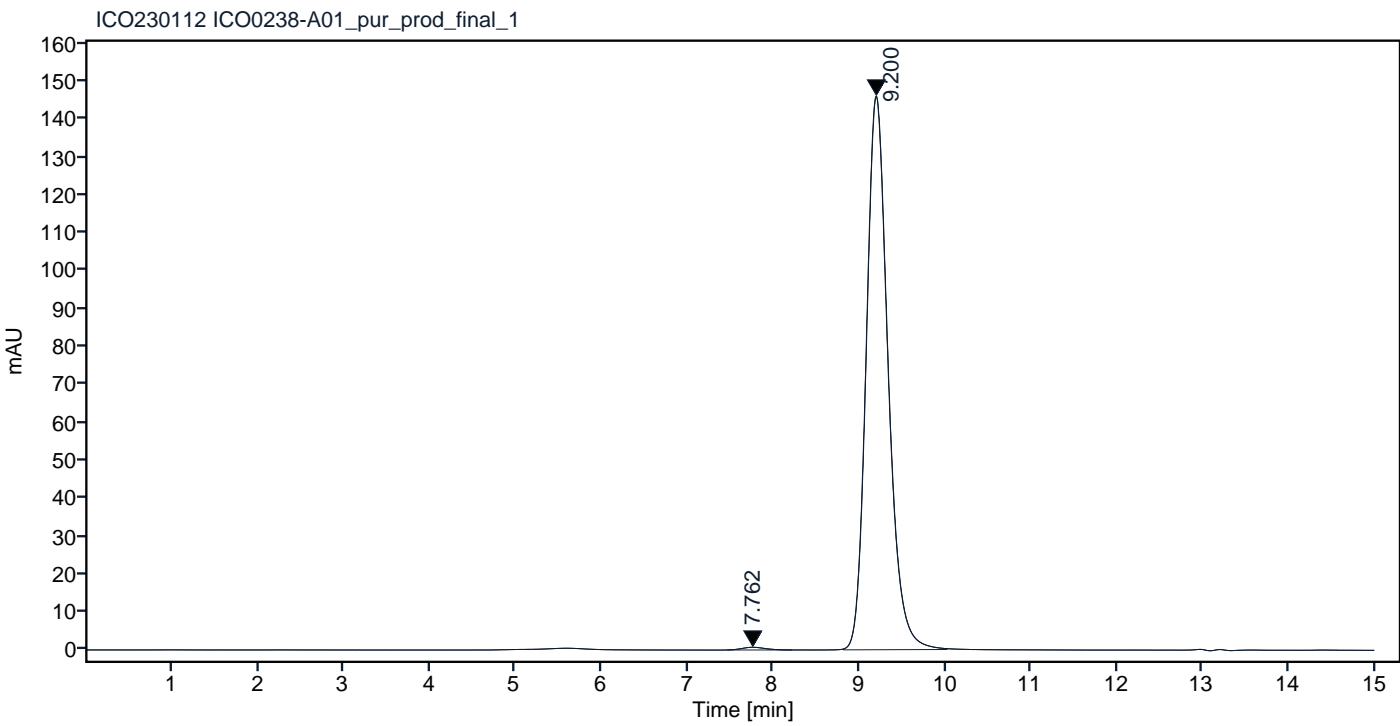


Figure 2. HPLC analytical SEC for final product.

Peak Table

RT	Area	Area %
7.777	23.0	0.86
9.200	2659.8	99.14

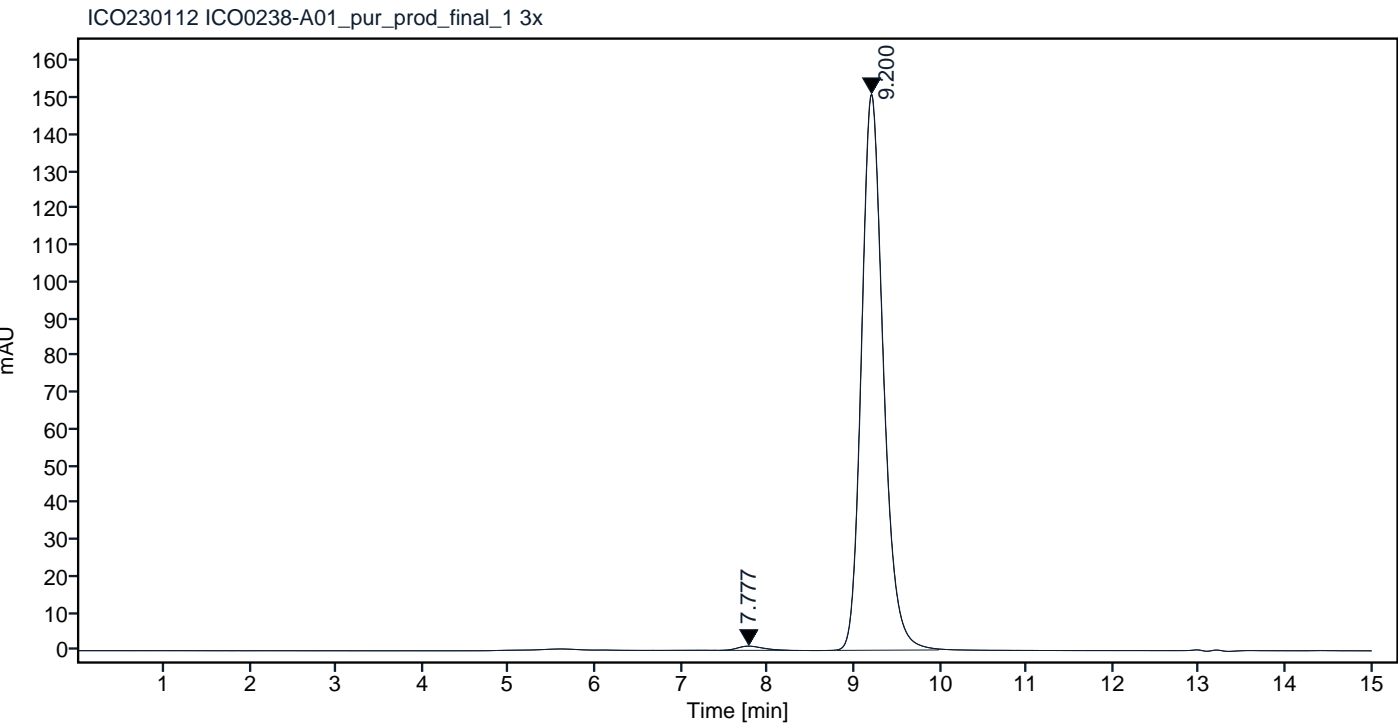
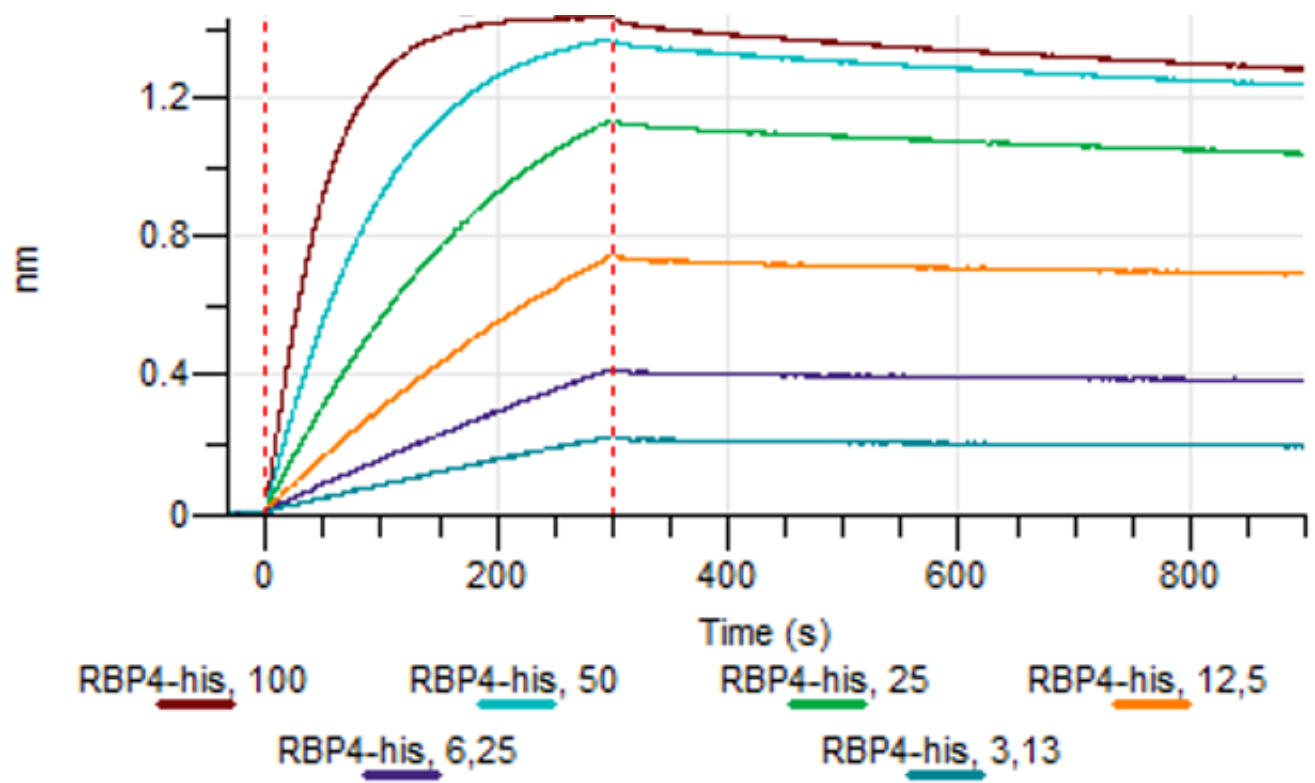


Figure 3. HPLC analytical SEC for final product.



**Figure 4.** Octet RED96e analysis, antibody was loaded on sensor for capture of RBP4-His protein in different concentrations.