



Monoclonal antibody to RBP4, clone 6C2, hIgG1

Catalogue #	R1-649-100
Immunogen:	Recombinant RBP4-His protein
Immunogen Description:	Recombinant RBP4 protein produced by CHO-based cell line (expressed by QMCF Technology).
Source:	Human
Clonality:	Human monoclonal
Clone:	6C2
Class:	hIgG1
Application:	ELISA, CLIA
Kd:	4.95 x 10 ⁻⁰⁹ M
Purification:	Protein A affinity chromatography following gel filtration
Concentration:	1 mg/ml
Buffer:	PBS pH 7.4
QC:	Simply Blue Safe stained SDS-PAGE, analytical SEC, Octet binding
Shipping:	Shipped with blue ice.
Storage:	Store at +4 °C. Avoid multiple freeze-thaw cycles.

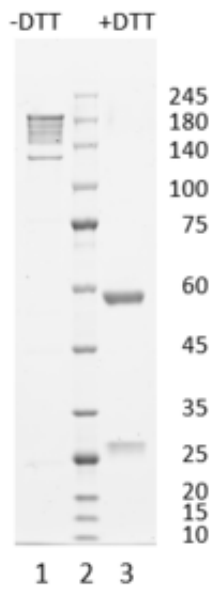


Figure 1. Simply Blue Safe stained SDS-PAGE analysis of monoclonal antibody to RBP4, clone 6C2. 4-12% gel is used for analysis. Lane 1. Monoclonal antibody to RBP4, clone 6C2 (-DTT) Lane 2. Size marker Lane 3. Monoclonal antibody to RBP4, clone 6C2 (+DTT)

Peak Table

RT	Area	Area %
8.881	2736.3	100.00

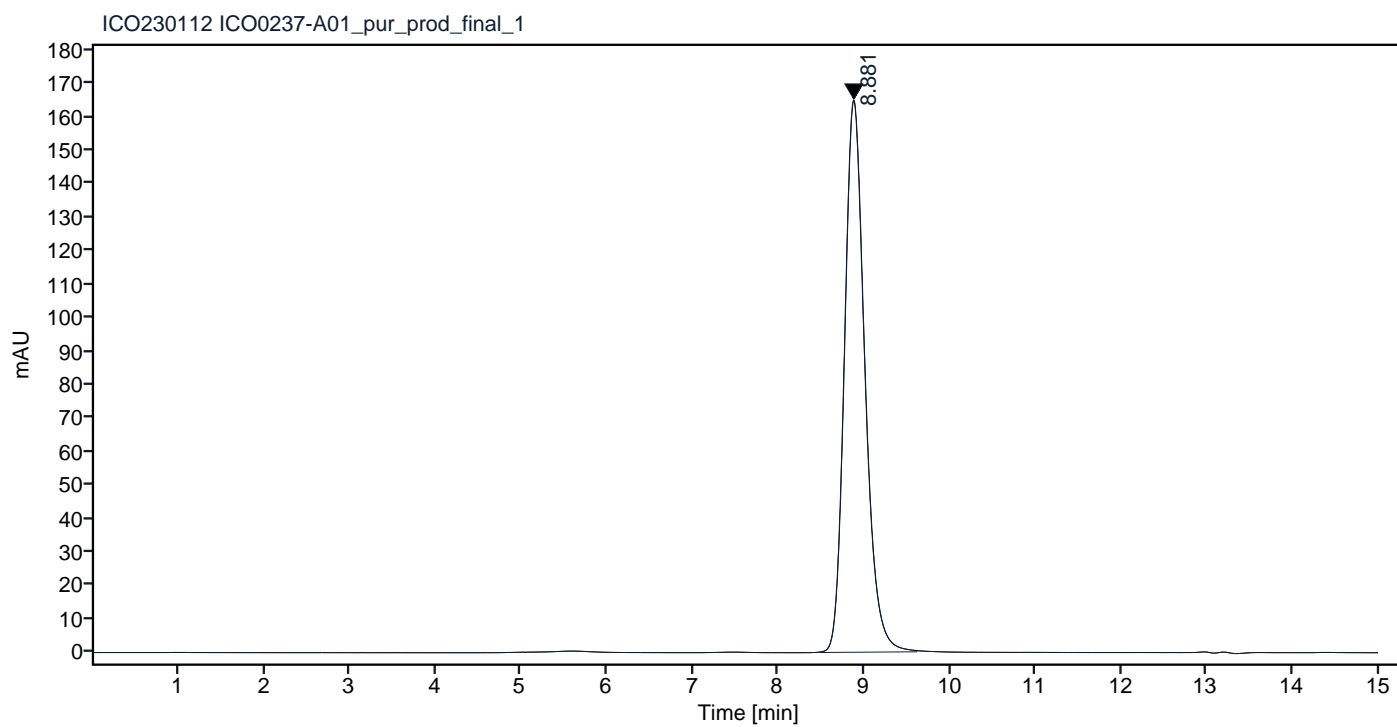


Figure 2. HPLC analytical SEC for final product.

Peak Table

RT	Area	Area %
8.881	2690.2	100.00

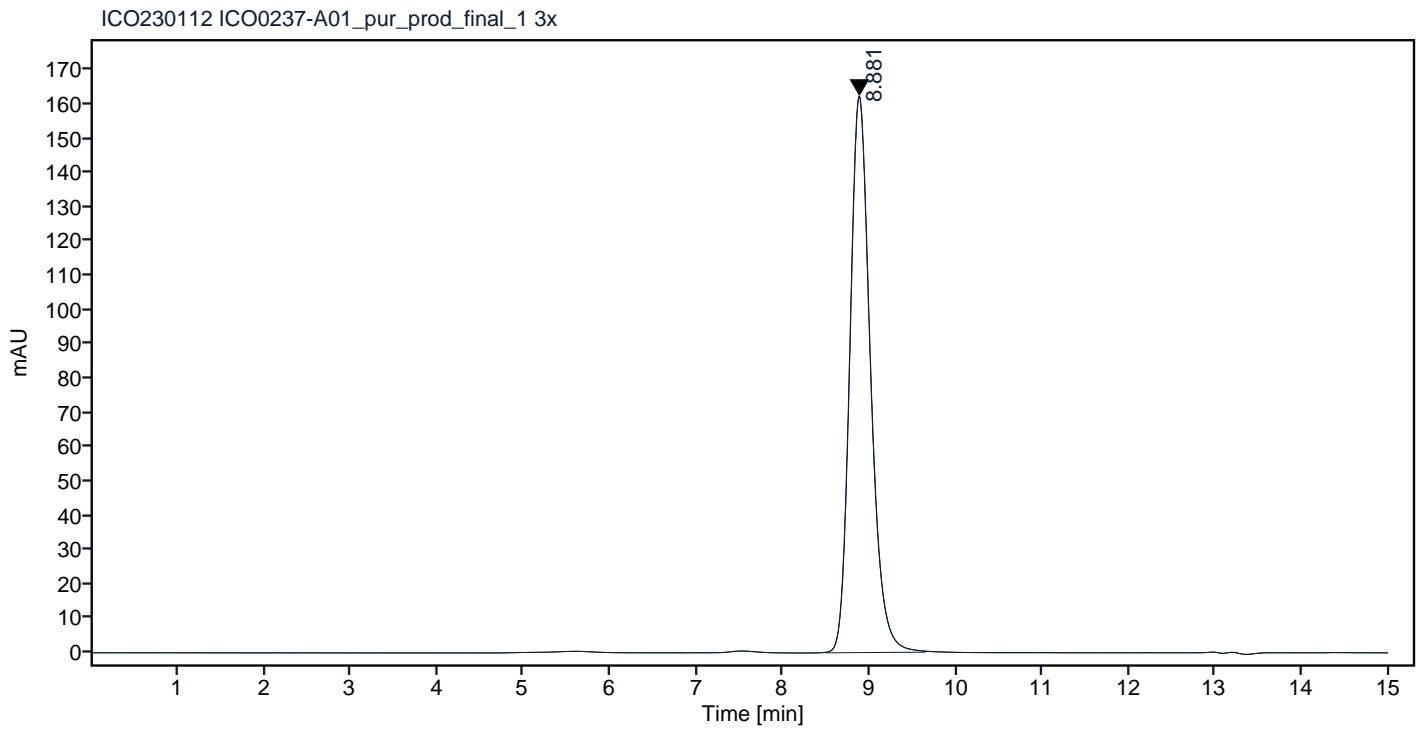


Figure 3. HPLC analytical SEC for final product.

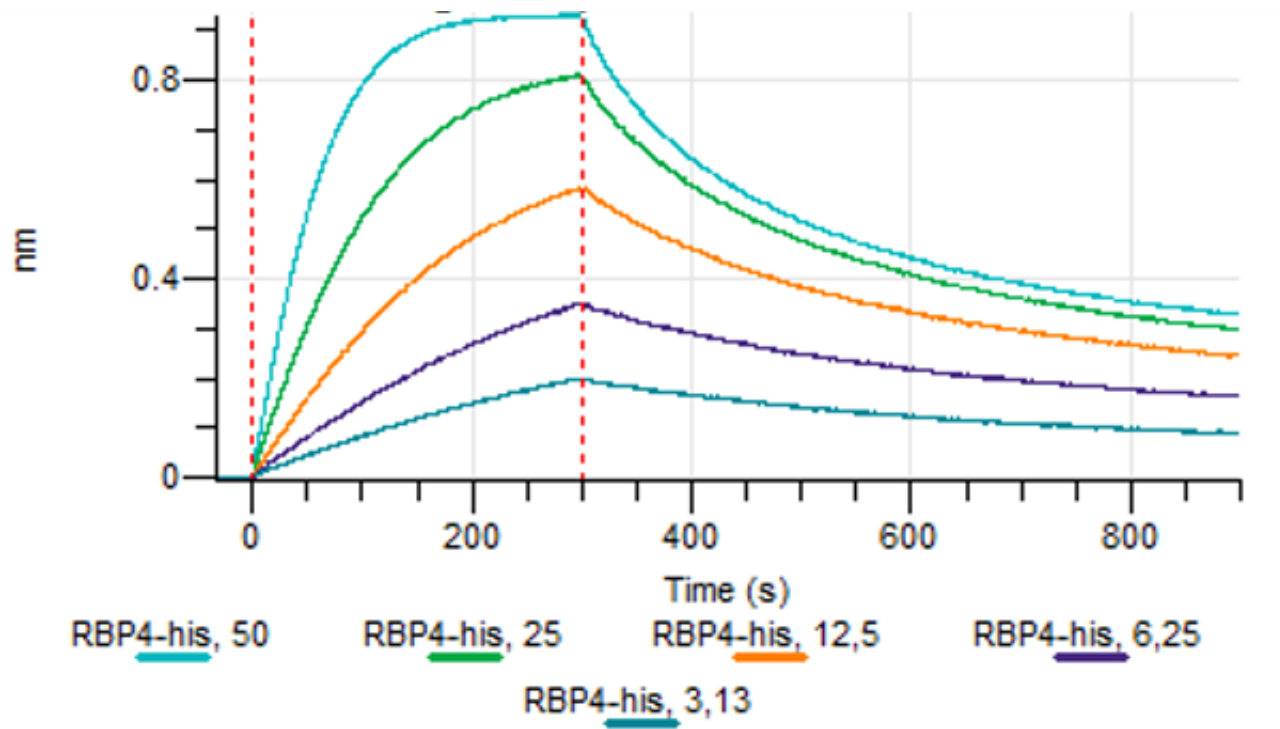


Figure 4. Octet RED96e analysis, antibody was loaded on sensor for capture of RBP4-His protein in different concentrations.