



Recombinant antibody to hGDF15, clone 6E2, hIgG1

Catalogue #	R1-219-100
Immunogen:	Recombinant hGDF-15 protein
Immunogen Description:	Recombinant hGDF-15 protein produced by CHO-based cell line (expressed by QMCF Technology).
Clonality:	Human monoclonal
Clone:	6E2
Class:	hIgG1
Application:	ELISA, CLIA
Kd:	1.15 x 10 ⁻⁹ M
Purification:	Protein A affinity chromatography following gel filtration
Concentration:	1 mg/ml
Buffer:	PBS pH 7.4
QC:	Simply Blue Safe stained SDS-PAGE, analytical SEC, Octet BLI analysis
Shipping:	Shipped with blue ice.
Storage:	Store at +4 °C.

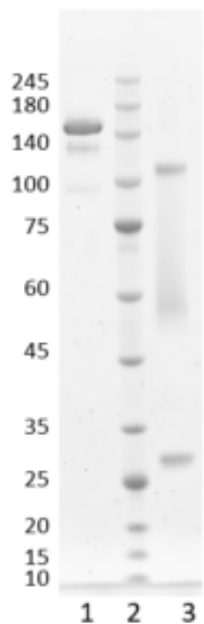


Figure 1. Simply Blue Safe stained SDS-PAGE analysis of recombinant antibody to hGDF15, clone 6E2. 4-12% gel is used for analysis. Lane 1. Recombinant antibody to hGDF15, clone 6E2 (-DTT) Lane 2. Size marker Lane 3. Recombinant antibody to hGDF15, clone 6E2 (+DTT)

Peak Table

RT	Area	Area %
8.810	2722.9	100.00

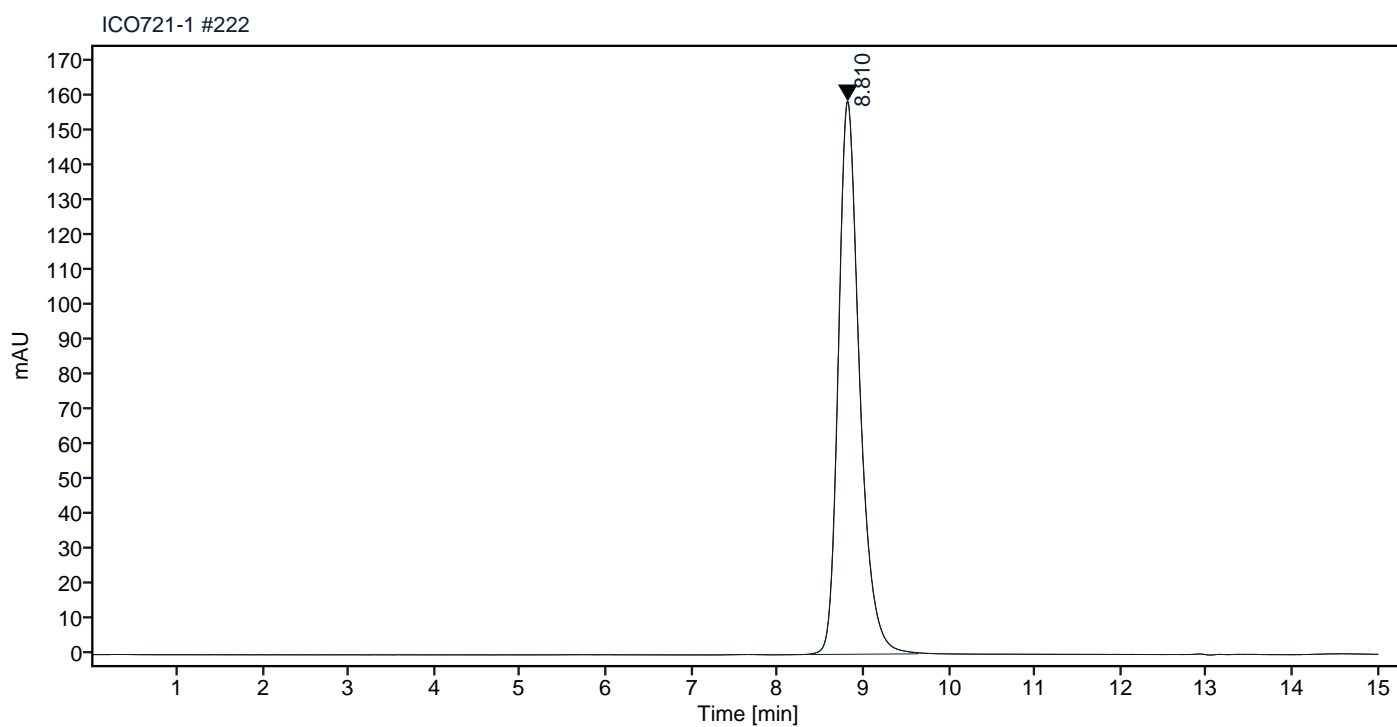


Figure 2. HPLC analytical SEC for final product.

Peak Table

RT	Area	Area %
8.810	2427.9	100.00

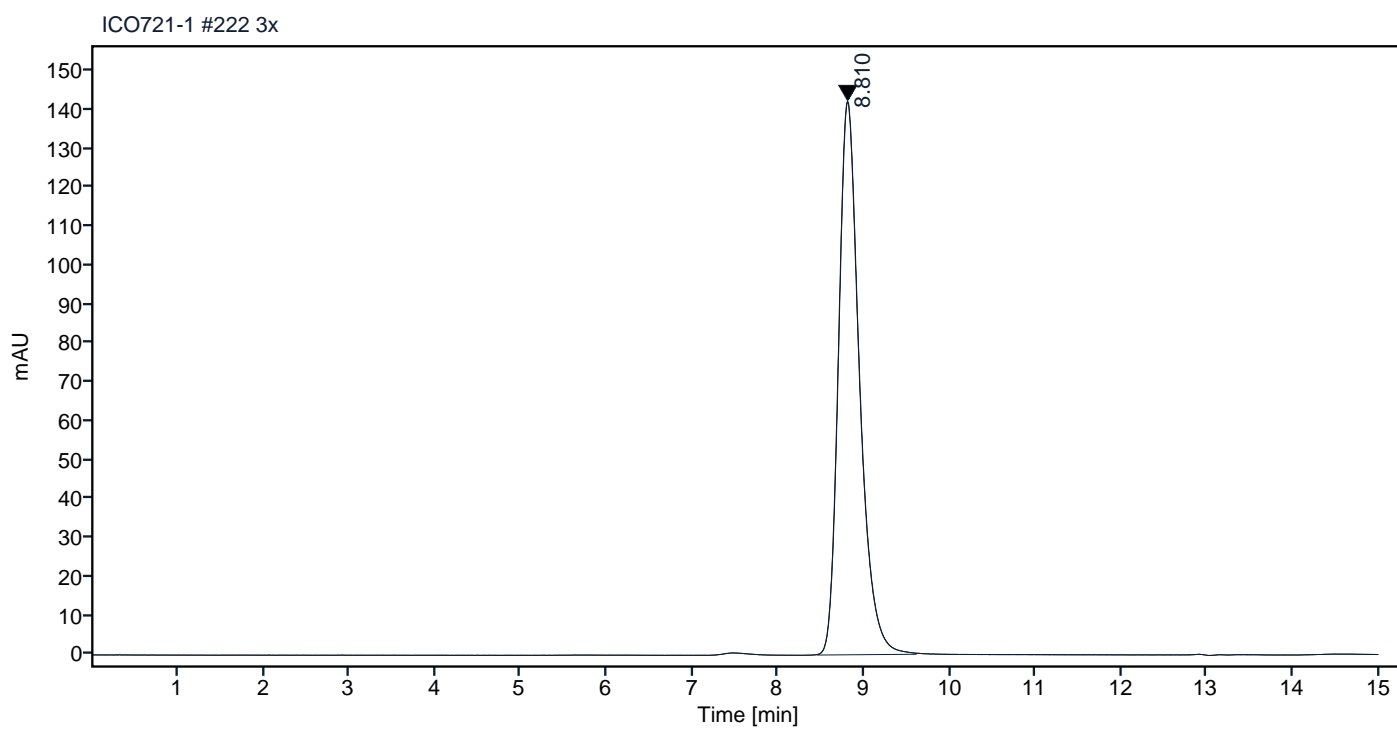


Figure 3. HPLC analytical SEC after 3 freeze-thaw cycles.

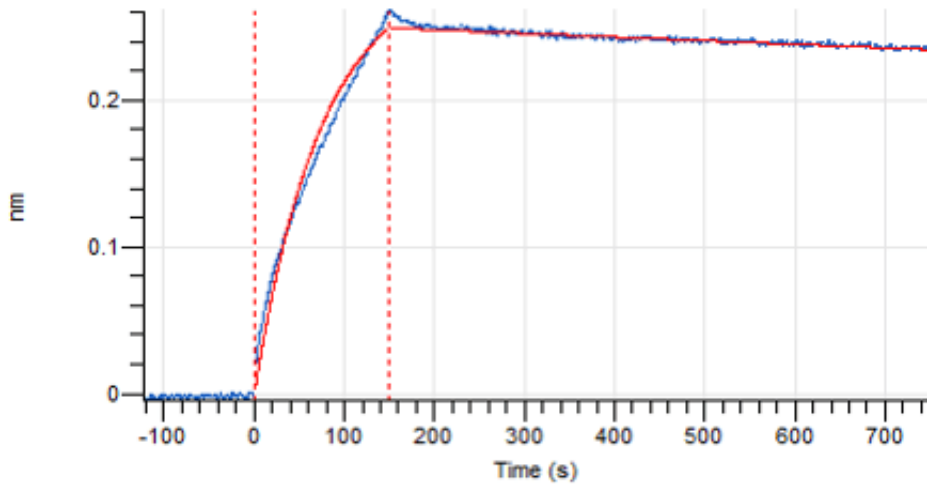


Figure 4. Octet BLI analysis, antibody was loaded on sensor for capture of hGDF-15 protein.