



Recombinant antibody to hGDF15, clone 7B11, hIgG1

Catalogue #	R1-217-100
Immunogen:	Recombinant hGDF-15 protein
Immunogen Description:	Recombinant hGDF-15 protein produced by CHO-based cell line (expressed by QMCF Technology).
Clonality:	Human monoclonal
Clone:	7B11
Class:	hIgG1
Application:	ELISA, CLIA
Kd:	1.32 x 10 ⁻⁰⁹ M
Purification:	Protein A affinity chromatography following gel filtration
Buffer:	PBS pH 7.4
QC:	Simply Blue Safe stained SDS-PAGE, analytical SEC, Octet BLI analysis
Shipping:	Shipped with blue ice.
Storage:	Store at +4 °C.

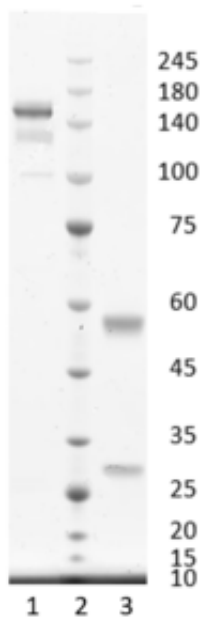


Figure 1. Simply Blue Safe stained SDS-PAGE analysis of recombinant antibody to hGDF15, clone 7B11. 4-12% gel is used for analysis. Lane 1. Recombinant antibody to hGDF15, clone 7B11 (-DTT) Lane 2. Size marker Lane 3. Recombinant antibody to hGDF15, clone 7B11 (+DTT)

Peak Table

RT	Area	Area %
8.753	2777.4	100.00

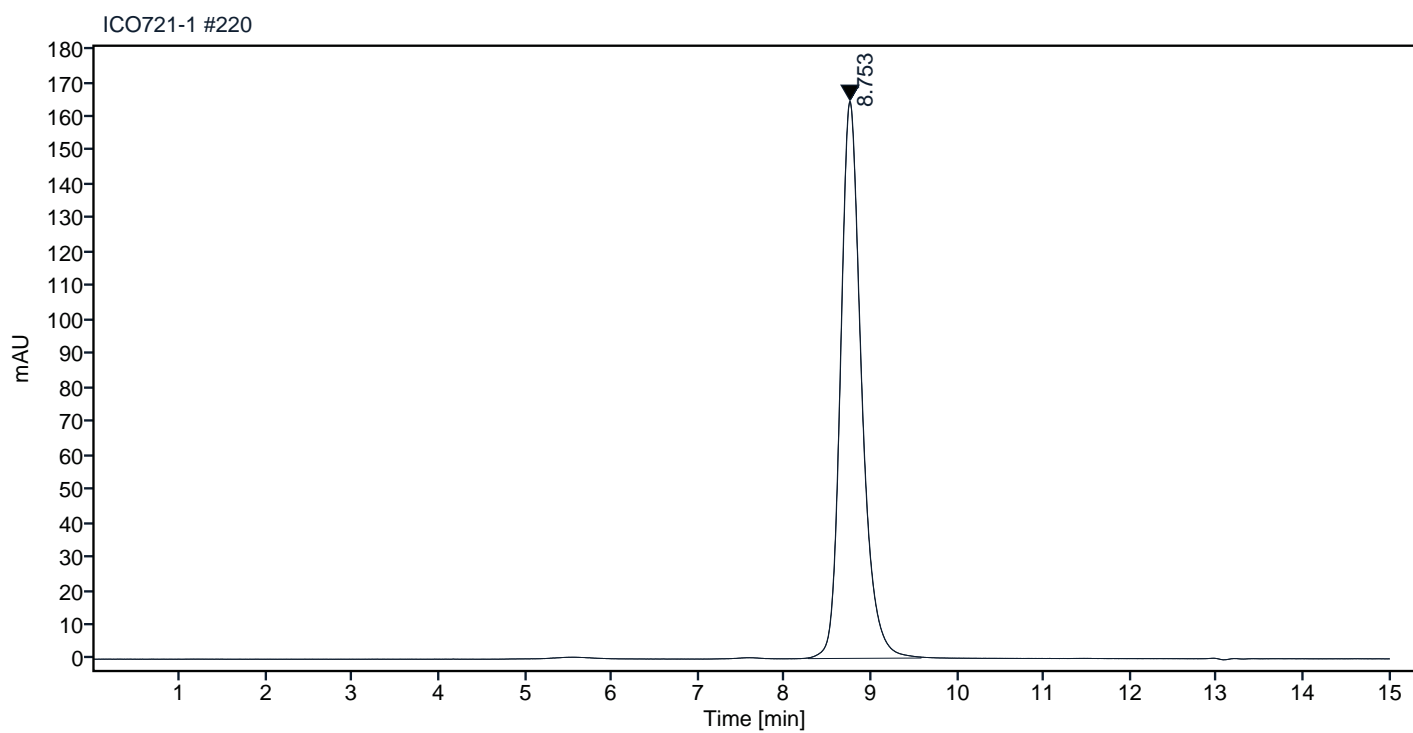


Figure 2. HPLC analytical SEC for final product.

Peak Table

RT	Area	Area %
8.753	2555.8	100.00

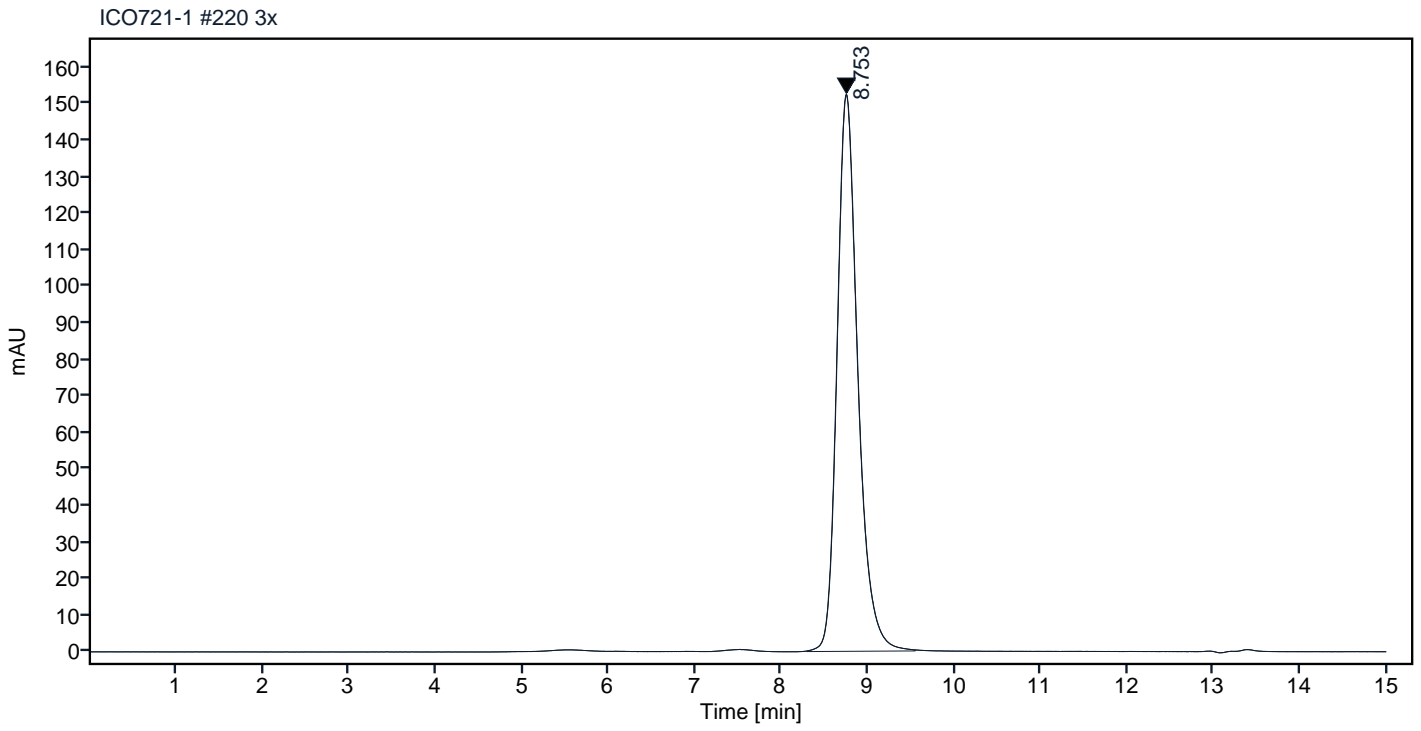


Figure 3. HPLC analytical SEC after 3 freeze-thaw cycles.

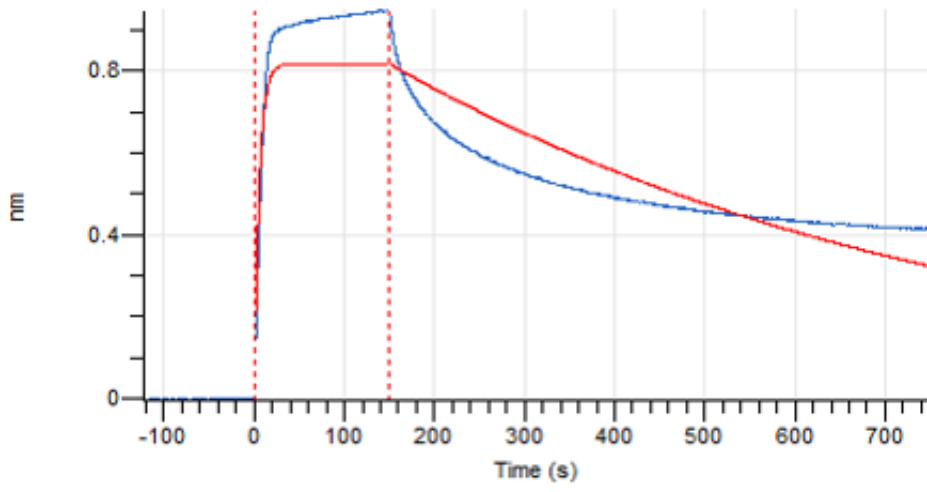


Figure 4. Octet BLI analysis, antibody was loaded on sensor for capture of hGDF-15 protein.