

Recombinant antibody to hGDF15, clone 4E4, hIgG1

Catalogue #	R1-216-100
Immunogen:	Recombinant hGDF-15 protein
Immunogen Description:	Recombinant hGDF-15 protein produced by CHO-based cell line (expressed by QMCF Technology).
Clonality:	Human monoclonal
Clone:	4E4
Class:	hIgG1
Application:	ELISA, CLIA
Kd:	1.42 x 10 ⁻⁰⁹ M
Purification:	Protein A affinity chromatography following gel filtration
Buffer:	PBS pH 7.4
Shipping:	Shipped with blue ice.
Storage:	Store at +4 °C. Avoid multiple freeze-thaw cycles.

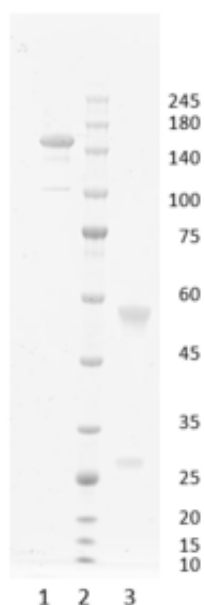


Figure 1. Simply Blue Safe stained SDS-PAGE analysis of recombinant antibody to hGDF15, clone 4E4. 4-12% gel is used for analysis. Lane 1. Recombinant antibody to hGDF15, clone 4E4 (-DTT) Lane 2. Size marker Lane 3. Recombinant antibody to hGDF15, clone 4E4 (+DTT)

Peak Table

RT	Area	Area %
8.294	25.8	0.97
8.925	2643.2	99.03

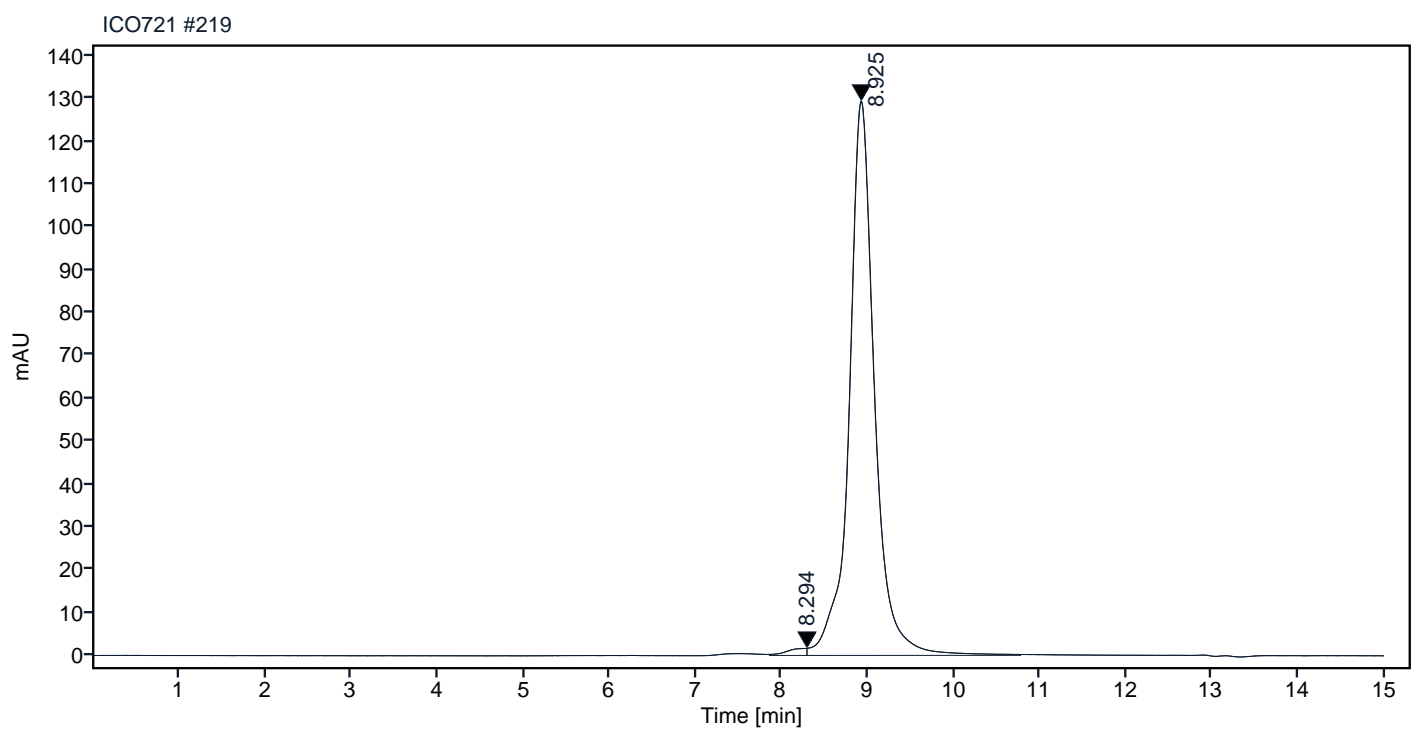


Figure 2. HPLC analytical SEC for final product.

Peak Table

RT	Area	Area %
8.202	15.3	0.86
8.925	1758.2	99.14

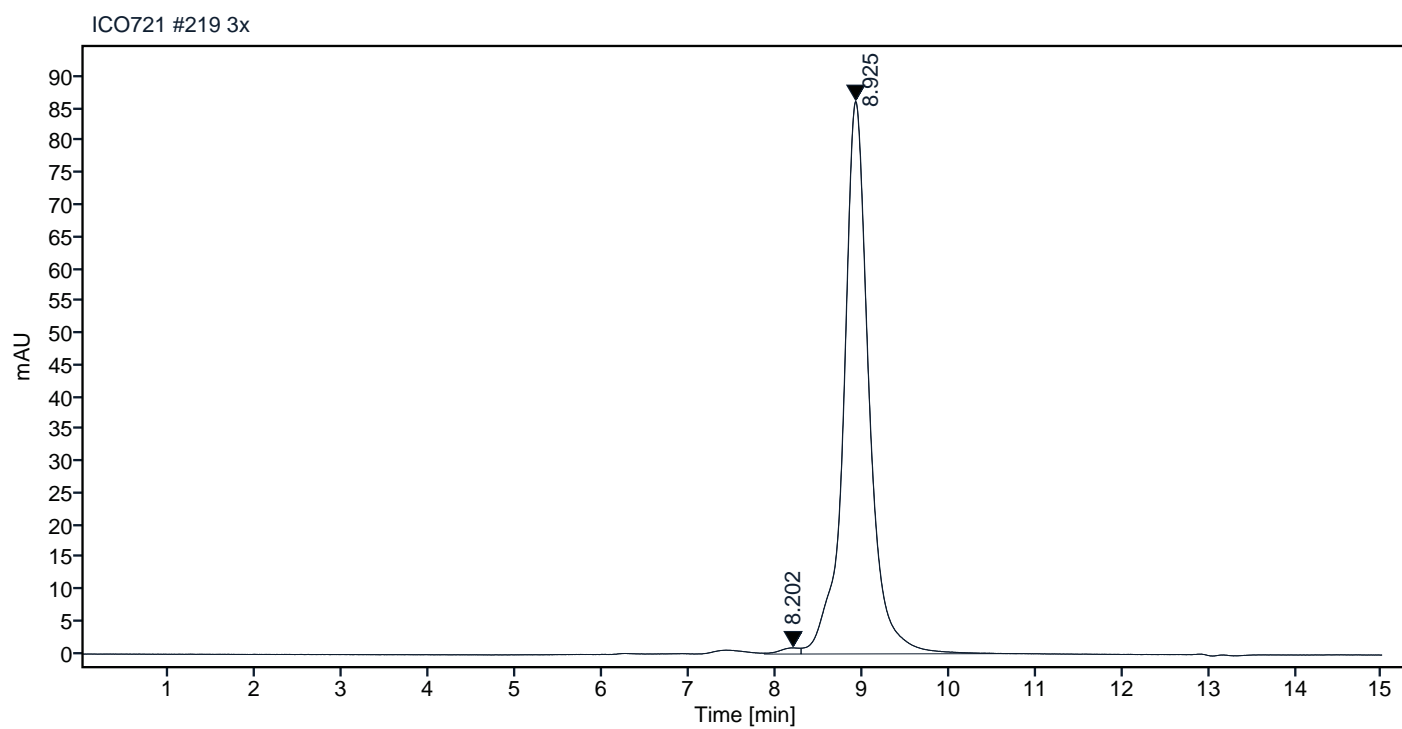


Figure 3. HPLC analytical SEC after 3 freeze-thaw cycles.

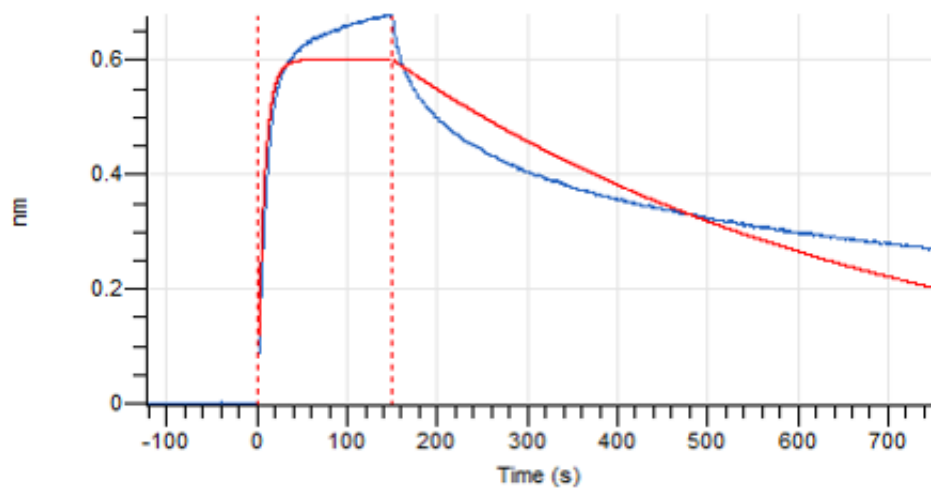


Figure 4. Octet RED96e analysis, antibody was loaded on sensor for capture of hGDF-15 protein.