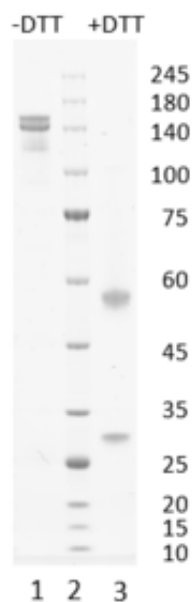




## Recombinant antibody to hGDF15, clone 1B2, hIgG1

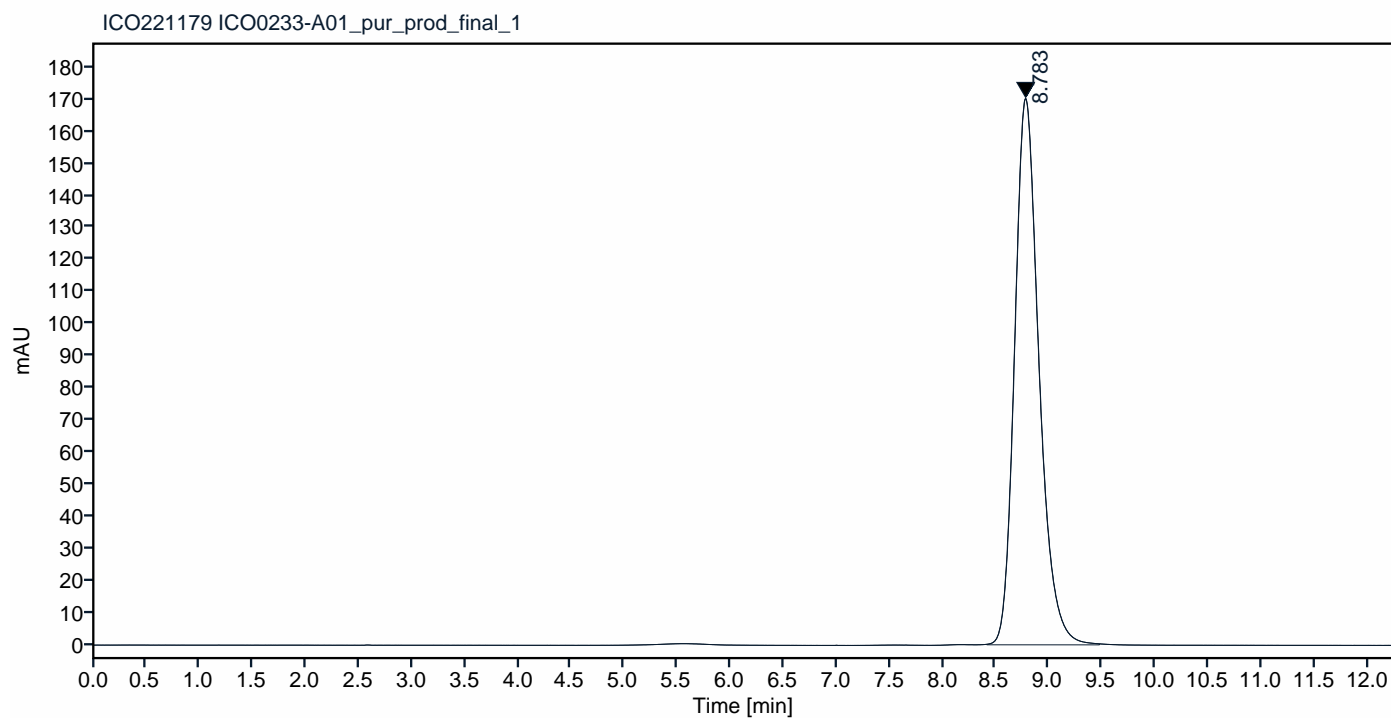
Catalogue #	R1-212-100
Immunogen:	Recombinant hGDF-15 protein
Immunogen Description:	Recombinant hGDF-15 protein produced by CHO-based cell line (expressed by QMCF Technology).
Clonality:	Human monoclonal
Clone:	1B2
Class:	hIgG1
Application:	ELISA, CLIA
Kd:	$3.93 \times 10^{-10}$ M
Purification:	Protein A affinity chromatography following gel filtration
Buffer:	PBS pH 7.4
QC:	Simply Blue Safe stained SDS-PAGE, analytical SEC, Octet binding
Shipping:	Shipped with blue ice.
Storage:	Store at +4 °C. Avoid multiple freeze-thaw cycles.



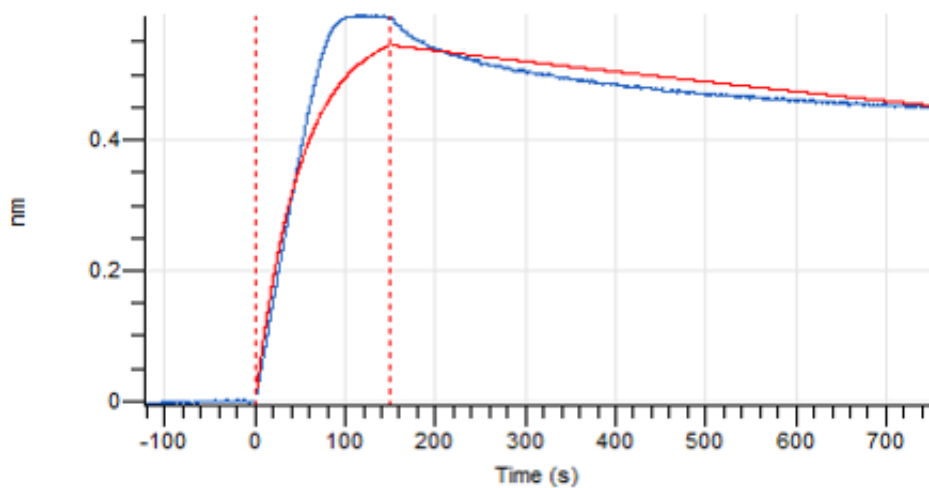
**Figure 1.** Simply Blue Safe stained SDS-PAGE analysis of recombinant antibody to hGDF15, clone 1B2. 4-12% gel is used for analysis. Lane 1. Recombinant antibody to hGDF15, clone 1B2 (-DTT) Lane 2. Size marker Lane 3. Recombinant antibody to hGDF15, clone 1B2(+DTT)

## Peak Table

RT	Area	Area %
8.783	2716.7	100.00



**Figure 2.** HPLC analytical SEC for final product.



**Figure 3.** Octet RED96e analysis, antibody was loaded on sensor for capture of hGDF-15 protein.