



Human IgG1 mAb to cardiac troponin I, clone 8B2

Catalogue #	R1-128-100
Immunogen:	Human cardiac troponin I
Immunogen Description:	Recombinant human cardiac troponin complex protein produced by CHO-based Icosagen Cell factory Ltd. proprietary suspension cell line
Clonality:	Human monoclonal
Clone:	8B2
Class:	hIgG1
Reactivity:	Human cardiac troponin I
Dissociation constant (K_D):	6.18×10^{-09} M (troponin complex binding from solution) 8.81×10^{-11} M1 (troponin complex binding from streptavidin surface)
Application:	ELISA, CLIA
Purification:	Protein A affinity chromatography following gel filtration
Concentration:	1 mg/ml
Buffer:	PBS, pH 7.4
QC:	Simply Blue Safe stained SDS-PAGE, analytical SEC, Octet binding
Shipping:	Shipped on blue ice.
Storage:	Refrigerated at +2...+8°C for short term. Store at -20 °C to -70 °C long term. Avoid multiple freeze-thaw cycles.

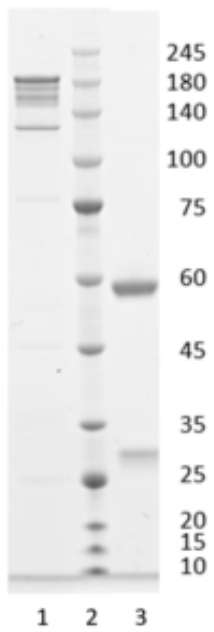


Figure 1. Simply Blue Safe Stained SDS-PAGE analysis of mAb to cardiac troponin I, clone 8B2. 4-15% gradient gel is used for analysis. Lane 1. Monoclonal antibody to cardiac troponin I, 8B2 (-DTT) Lane 2. Size marker. Lane 3. Monoclonal antibody to cardiac troponin I, 8B2 (+DTT)

Peak Table

RT	Area	Area %
8.786	2523.4	100.00

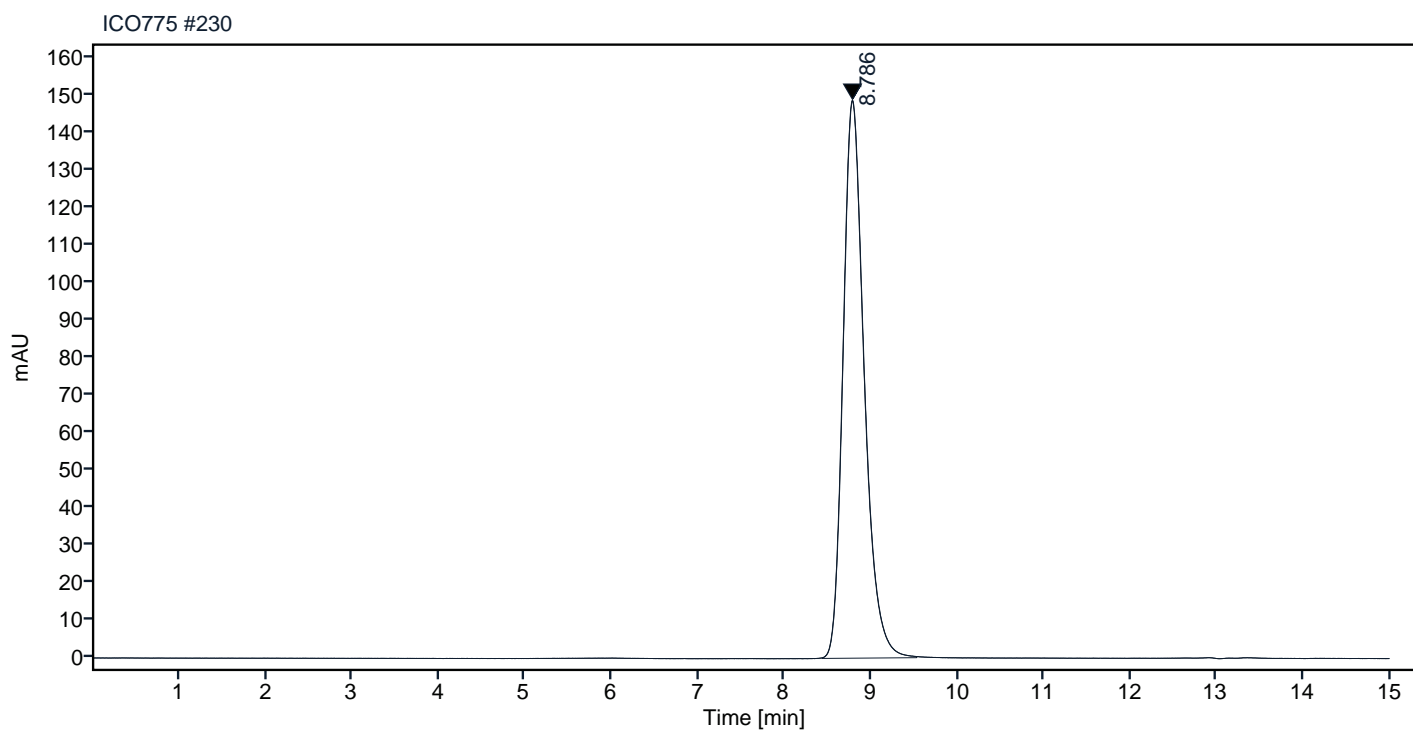


Figure 2. Analytical SEC of final product.

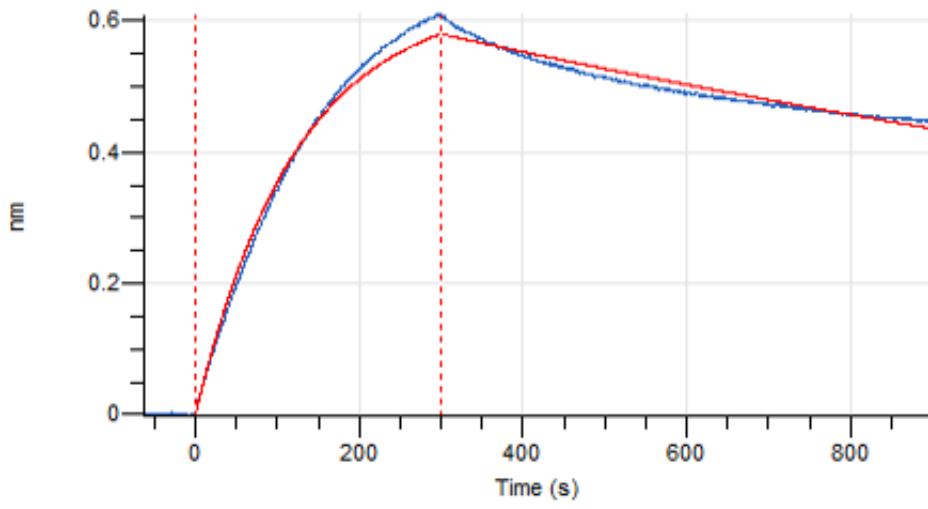


Figure 3. Octet RED96e analysis, antibody was loaded on sensor for capture of human cardiac troponin complex.

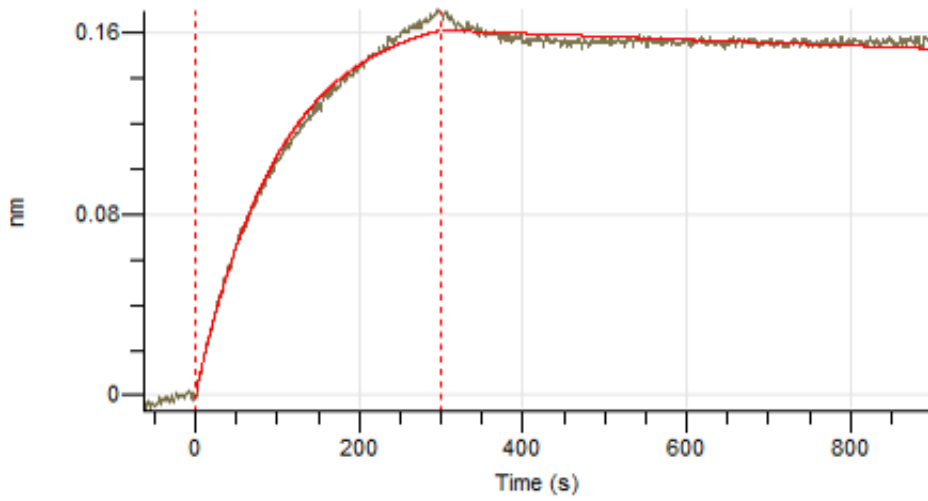


Figure 4. Octet RED96e analysis, biotinylated human cardiac troponin complex was loaded on sensor for capture of the antibody.