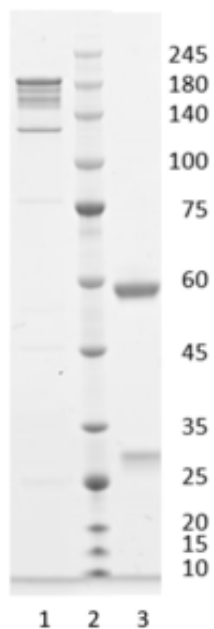




## Human IgG1 mAb to cardiac troponin I, clone 8B2

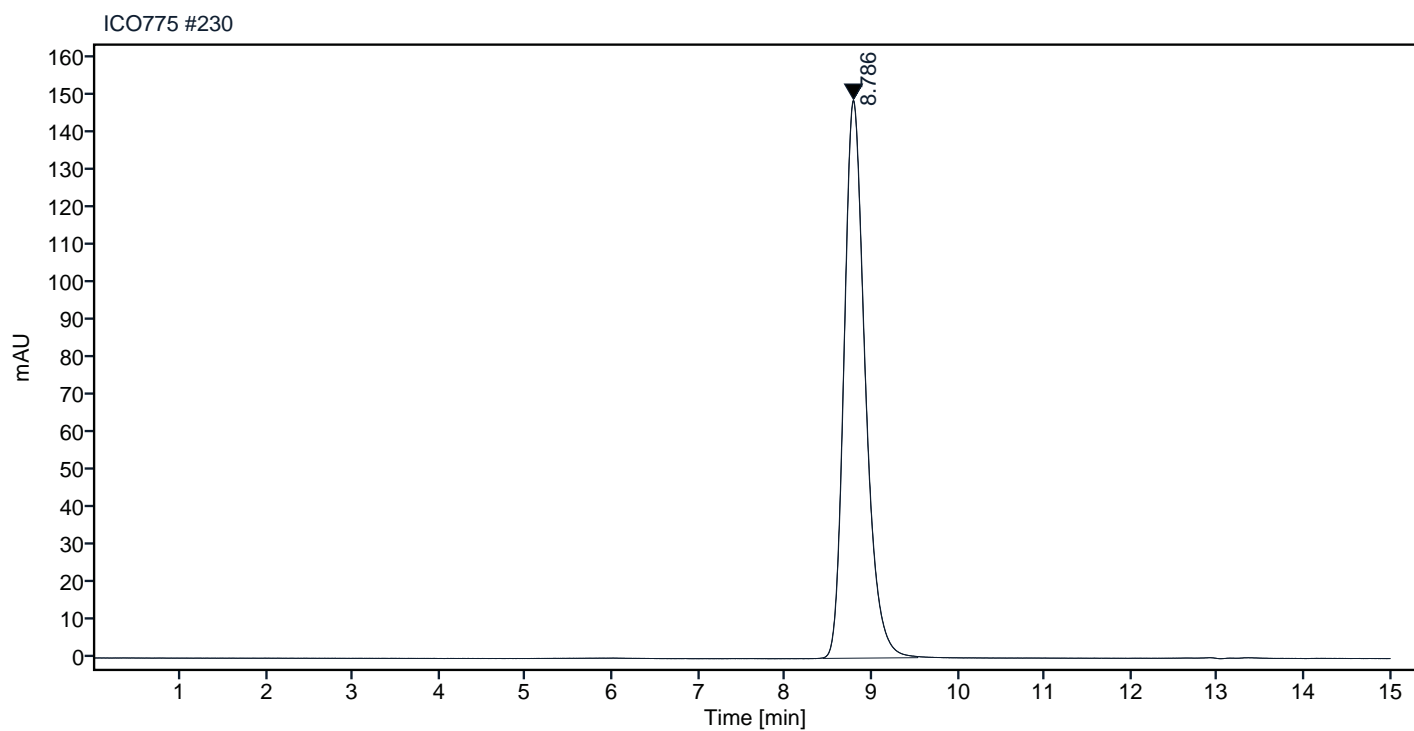
Catalogue #	R1-128-100
Immunogen:	Human cardiac troponin I
Immunogen Description:	Recombinant human cardiac troponin complex protein produced by CHO-based Icosagen Cell factory Ltd. proprietary suspension cell line
Clonality:	Human monoclonal
Clone:	8B2
Class:	hIgG1
Reactivity:	Human cardiac troponin I
Dissociation constant ( $K_D$ ):	$6.18 \times 10^{-09}$ M (troponin complex binding from solution) $8.81 \times 10^{-11}$ M1 (troponin complex binding from streptavidin surface)
Application:	ELISA, CLIA
Purification:	Protein A affinity chromatography following gel filtration
Concentration:	1 mg/ml
Buffer:	PBS, pH 7.4
QC:	Simply Blue Safe stained SDS-PAGE, analytical SEC, Octet binding
Shipping:	Shipped on blue ice.
Storage:	Refrigerated at +2...+8°C for short term. Store at -20 °C to -70 °C long term. Avoid multiple freeze-thaw cycles.



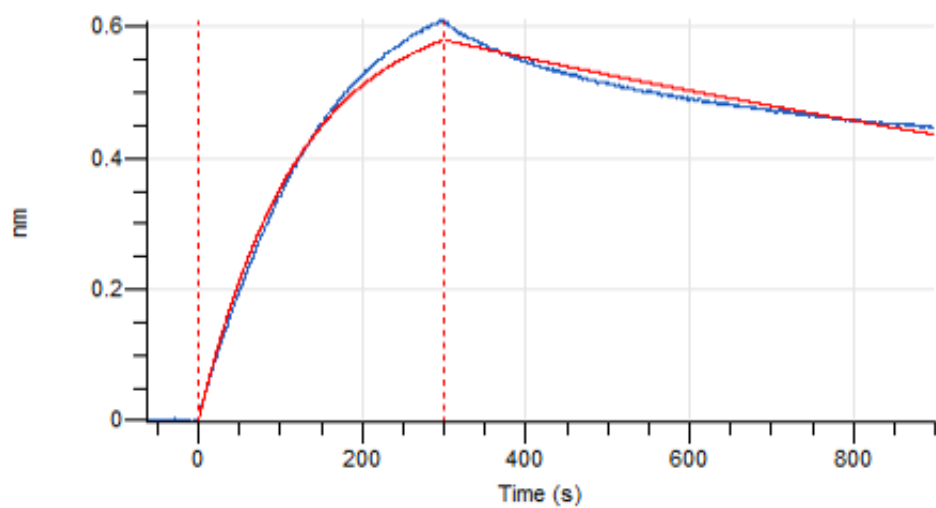
**Figure 1.** Simply Blue Safe Stained SDS-PAGE analysis of mAb to cardiac troponin I, clone 8B2. 4-15% gradient gel is used for analysis. Lane 1. Monoclonal antibody to cardiac troponin I, 8B2 (-DTT) Lane 2. Size marker. Lane 3. Monoclonal antibody to cardiac troponin I, 8B2 (+DTT)

## Peak Table

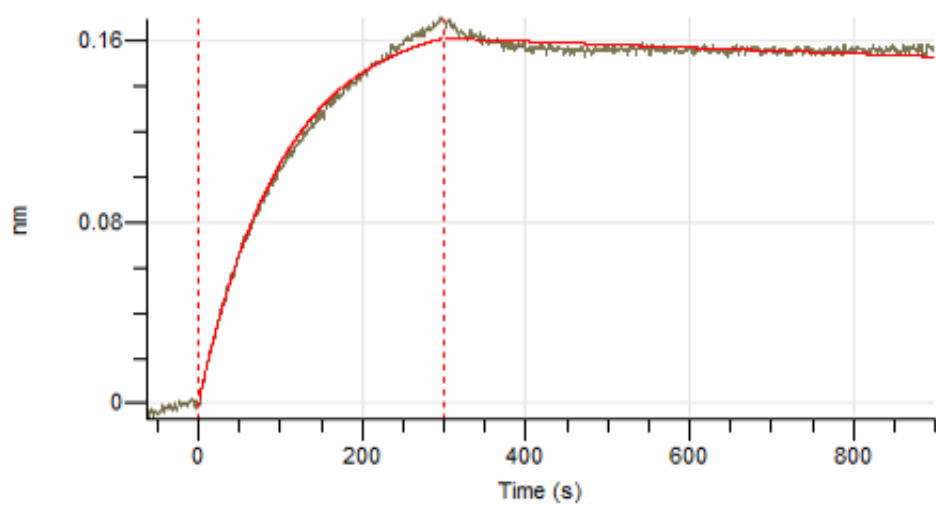
RT	Area	Area %
8.786	2523.4	100.00



**Figure 2.** Analytical SEC of final product.



**Figure 3.** Octet RED96e analysis, antibody was loaded on sensor for capture of human cardiac troponin complex.



**Figure 4.** Octet RED96e analysis, biotinylated human cardiac troponin complex was loaded on sensor for capture of the antibody.